



## Murano Touch

### Contents

[Safety and usage cautions](#)

[FLUSH plates](#)

- [Elevator car column panel](#) -

- [Short elevator car panel](#) -

- [Floor panel](#) -

[SURFACE plates](#)

- [Elevator car column panel](#) -

- [Short elevator car panel](#) -

- [Floor panel](#) -

[TOUCH push button](#)



## Safety and usage cautions

Before installing our products, we recommend you to consult the section about safety and usage cautions at the link below.



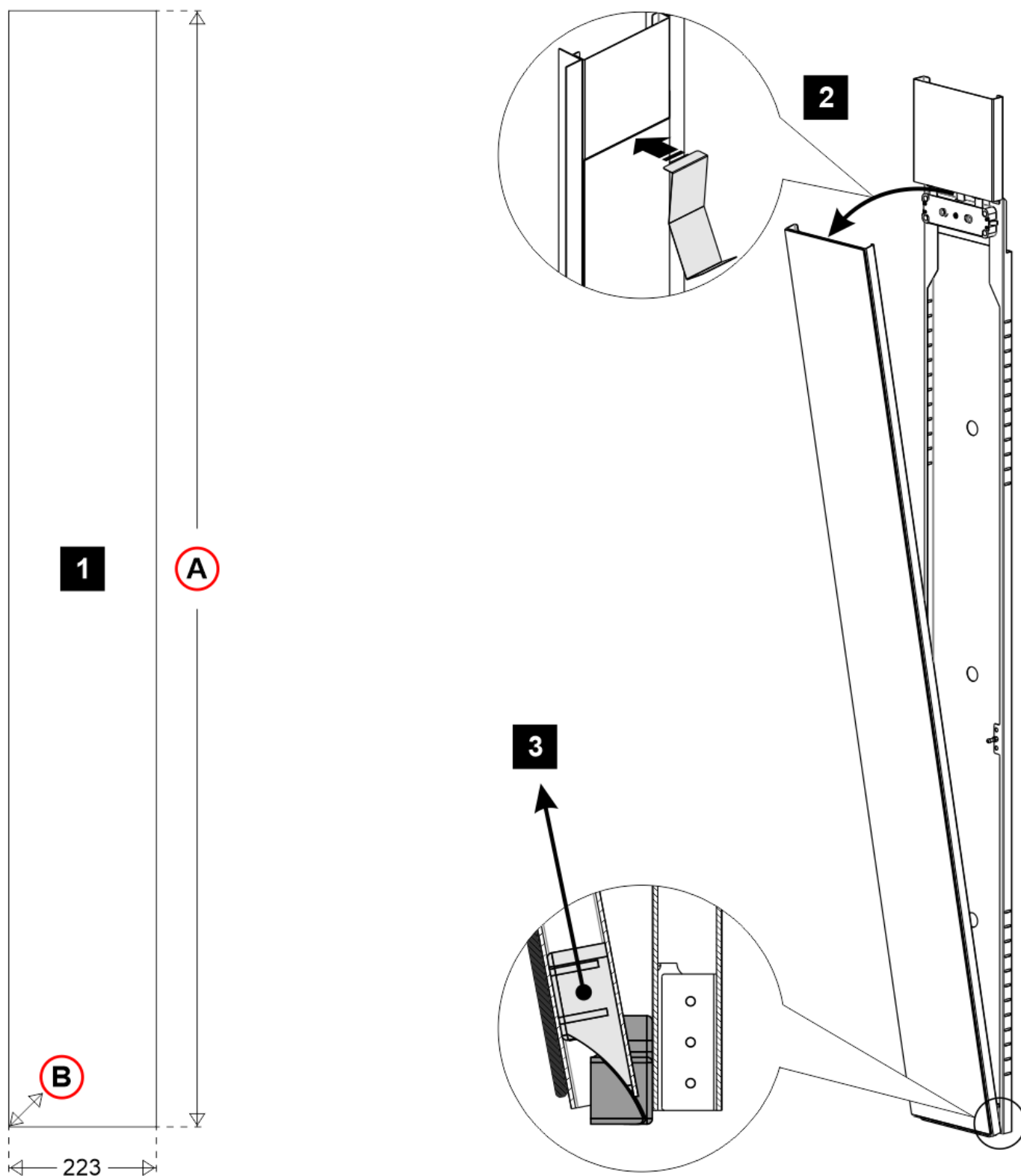
- ❗ Do not touch the control panel using wet hands or other wet body parts.  
Do not install the control panel in a humid environment and/or in direct sunlight.  
Unintentional activations may happen in the following cases:
  - *During the cleaning phase.*
  - *If the control panel is not completely dry.***The protective film must be removed before powering the control panel.**

# FLUSH plates

## - Elevator car column panel -

[Phase 1] – Cut-out wall of elevator car

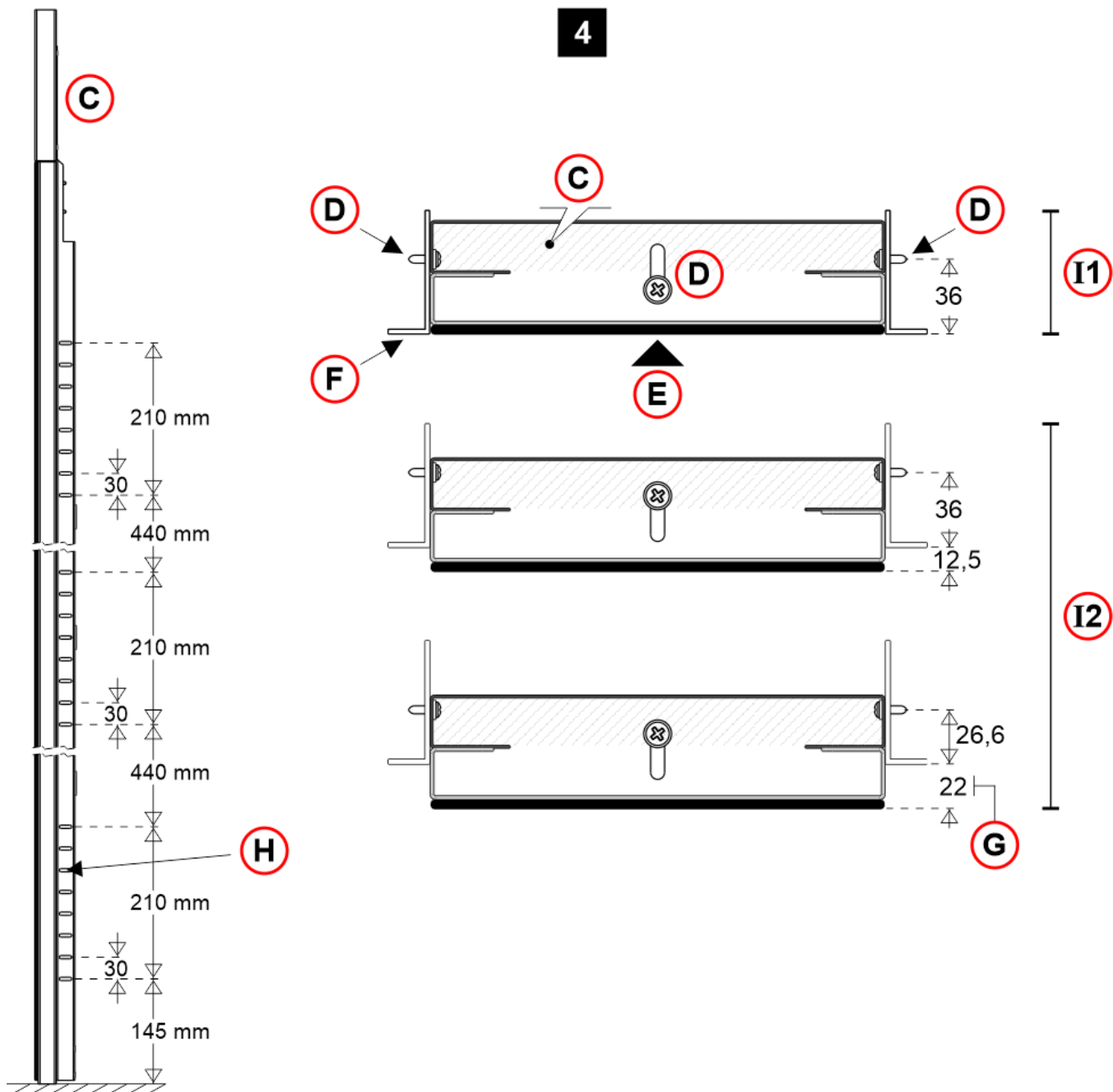
[Phase 2/3] – Remove the column from the wall box



A) – Total height column + 2mm (ex. 2.115 mm + 2 mm)

B) – Depth: 60 mm minimum

[Phase 4]– Reference settings for fixing



C) – Back box

D) – Fixing screws

E) – Column front view

F) – Elevator car wall profile

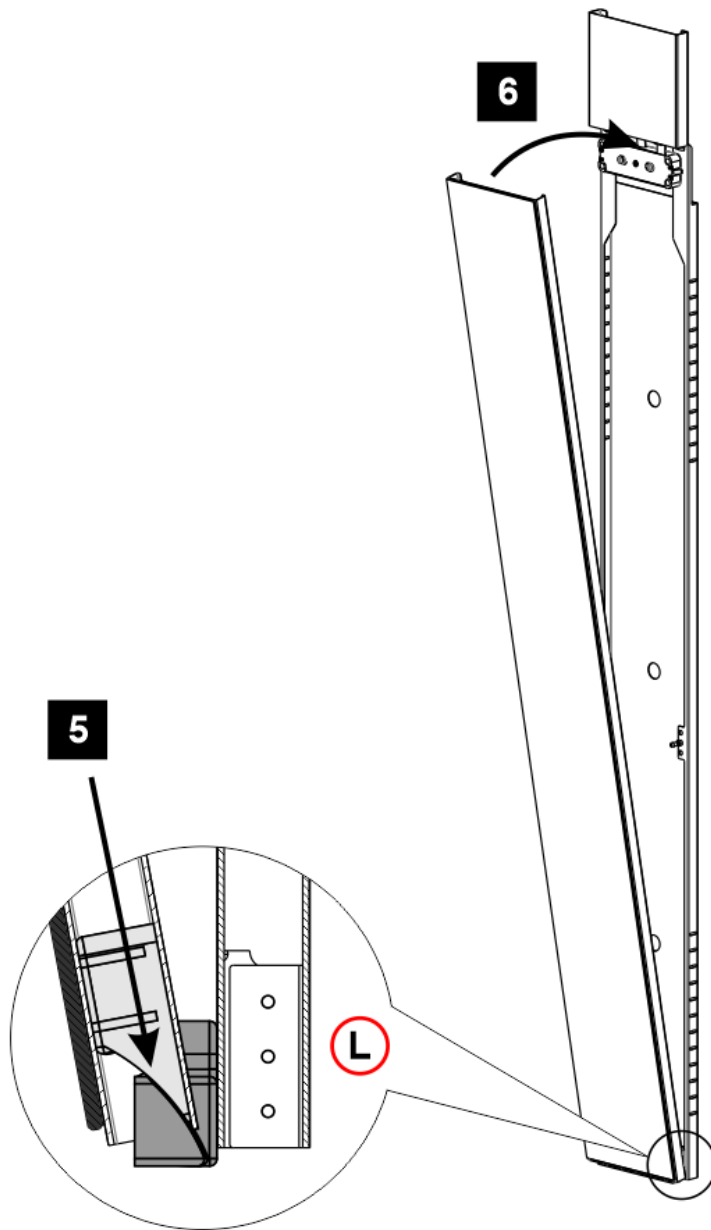
G) – Maximum protrusion

H) – Adjustment holes

I1) – Flush plate installation

l2) – Protruding installation

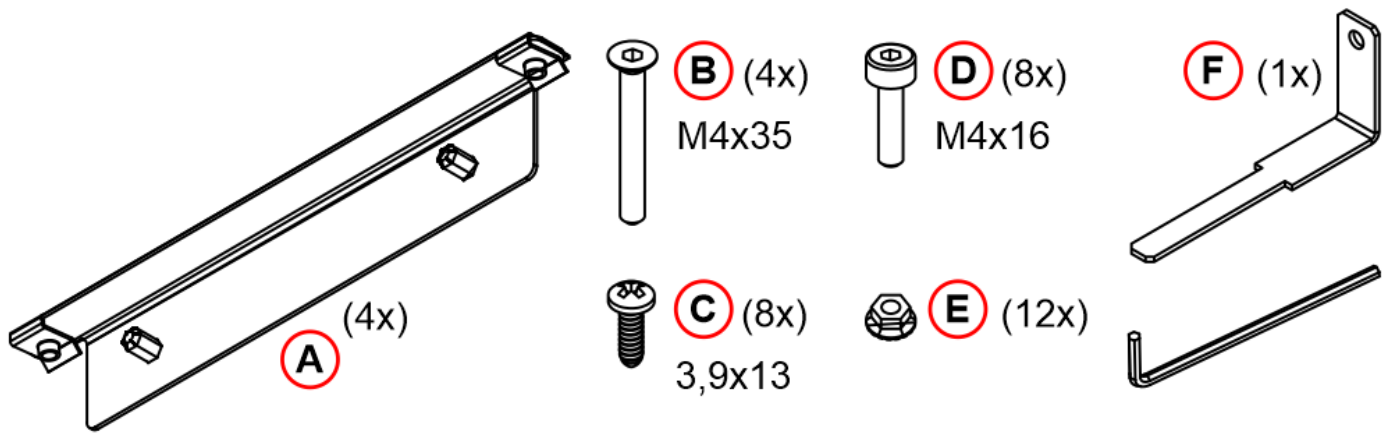
[Phase 5/6] – See below



L) – Hinge detail

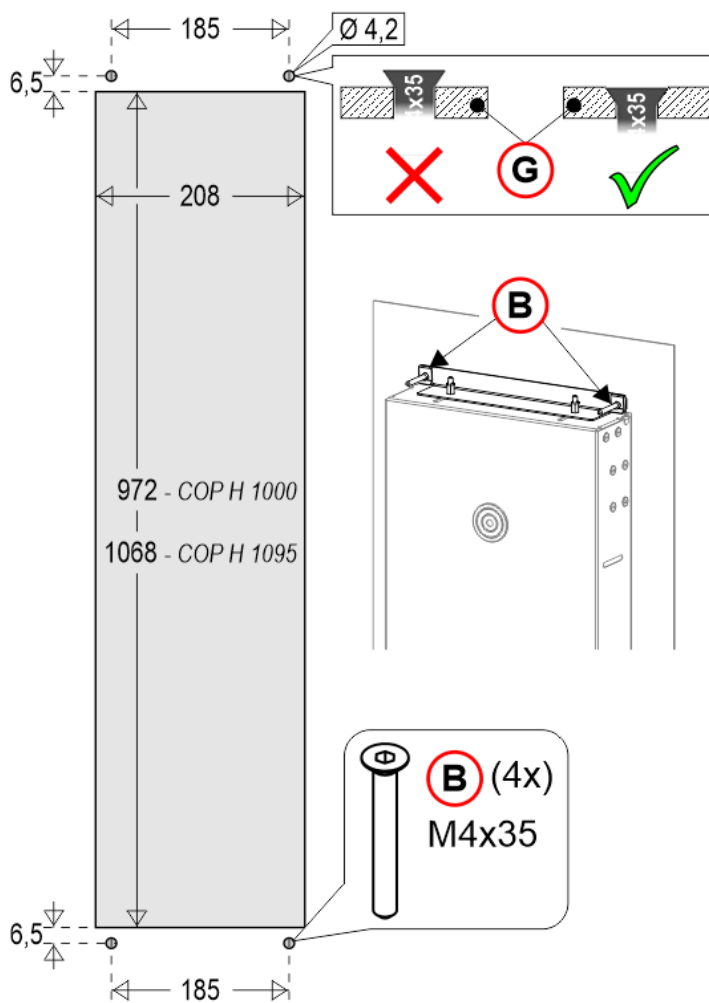
– Short elevator car panel –

[Mounting kit]



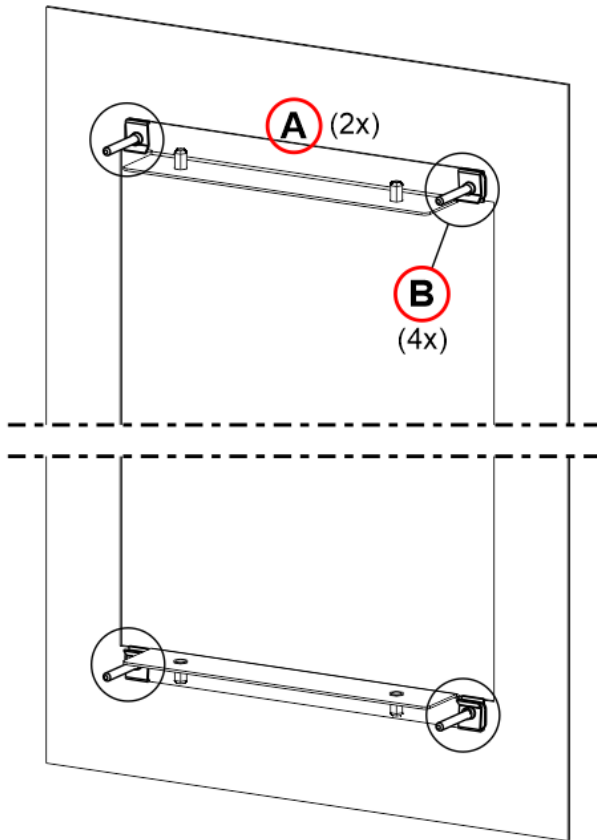
⊖ Elevator car wall 1,5 ÷ 25 mm thickness

[Cut-out] – FRONT fixing

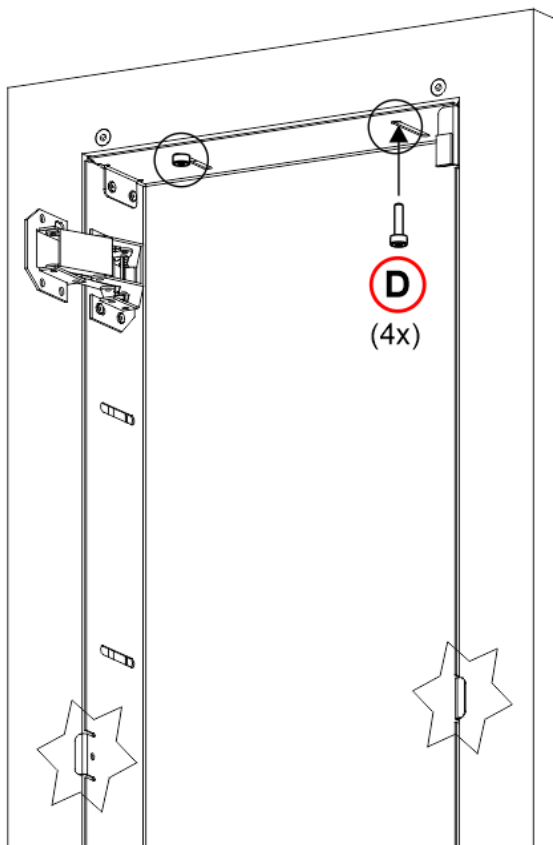


G) – Elevator car wall

[Phase 1] – See below (back view)



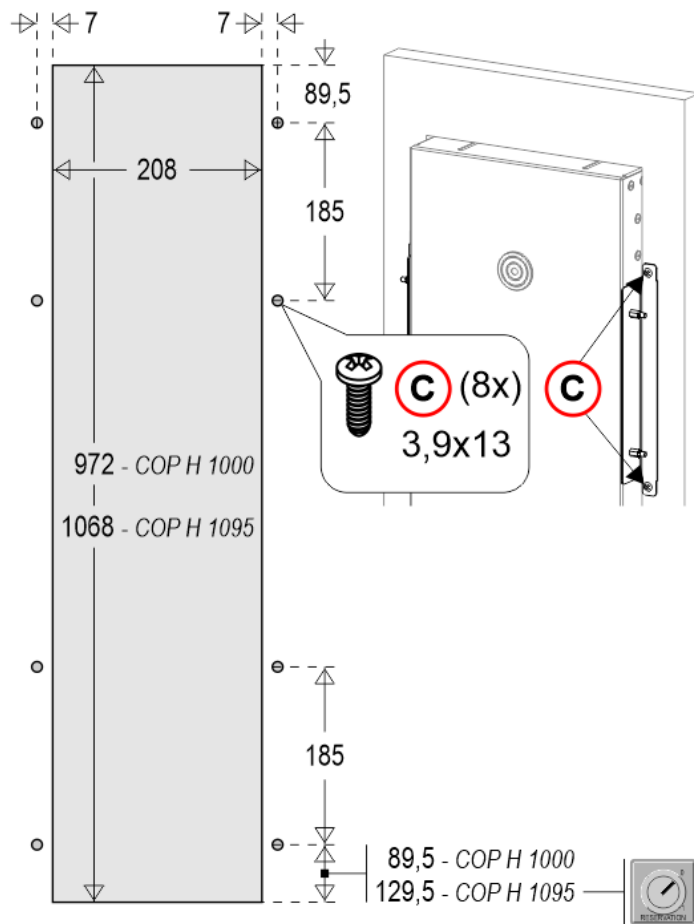
[Phase 2] – See below (front view)



Insert the box up to the flap and fasten it (D)

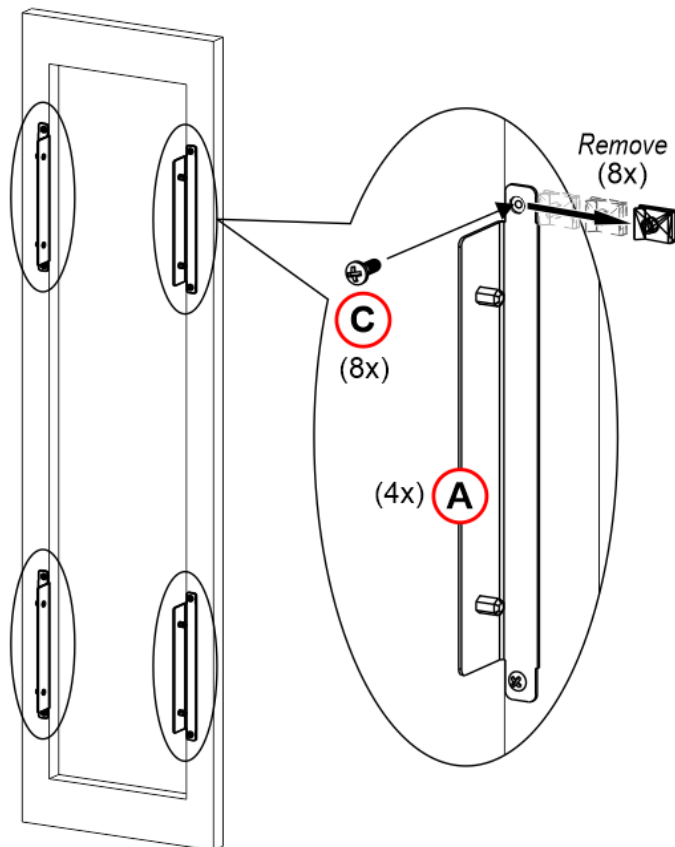
⊖ Elevator car wall 15 ÷ 25 mm thickness

[Cut-out] – BACK fixing

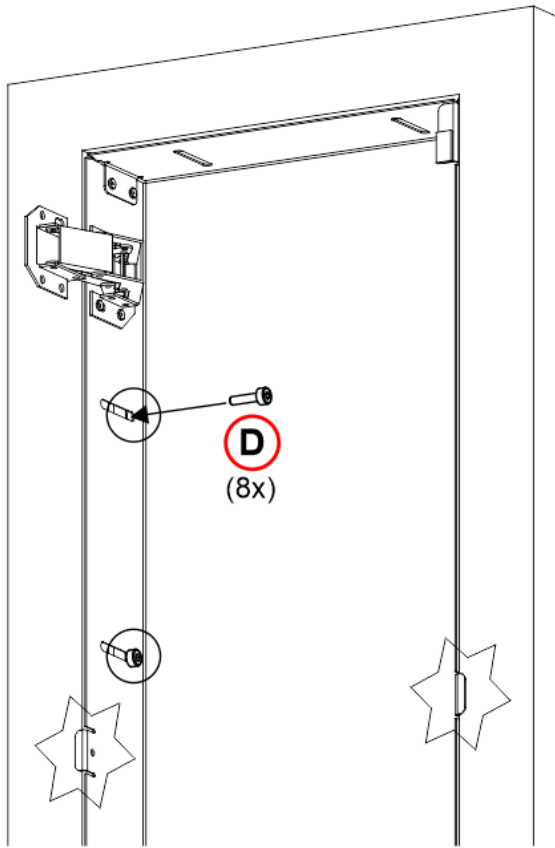


The 8 holes must NOT be made on the front view of the elevator car wall.

[phase 1] – See below (back view)

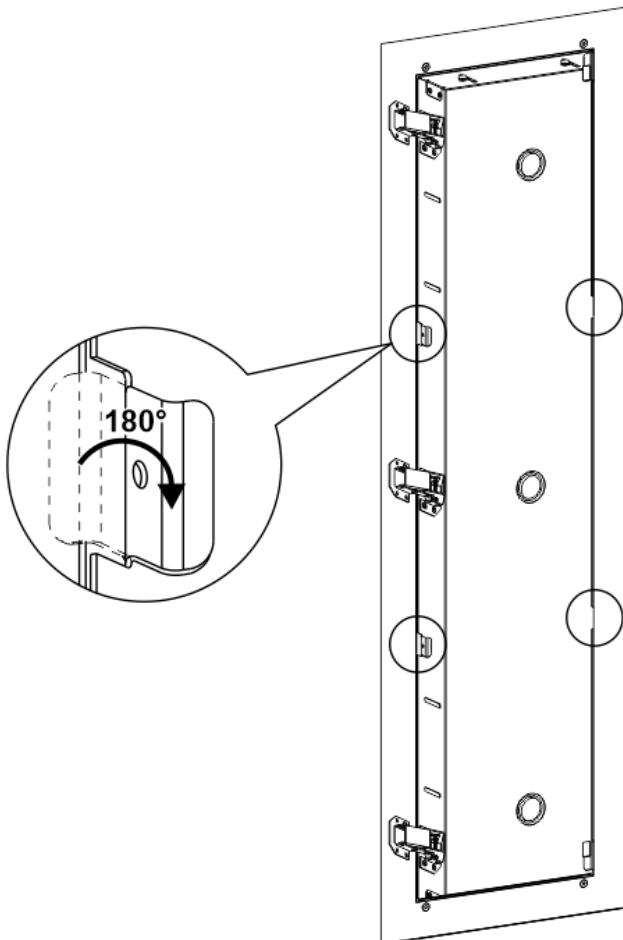


[Phase 2] – See below (front view)



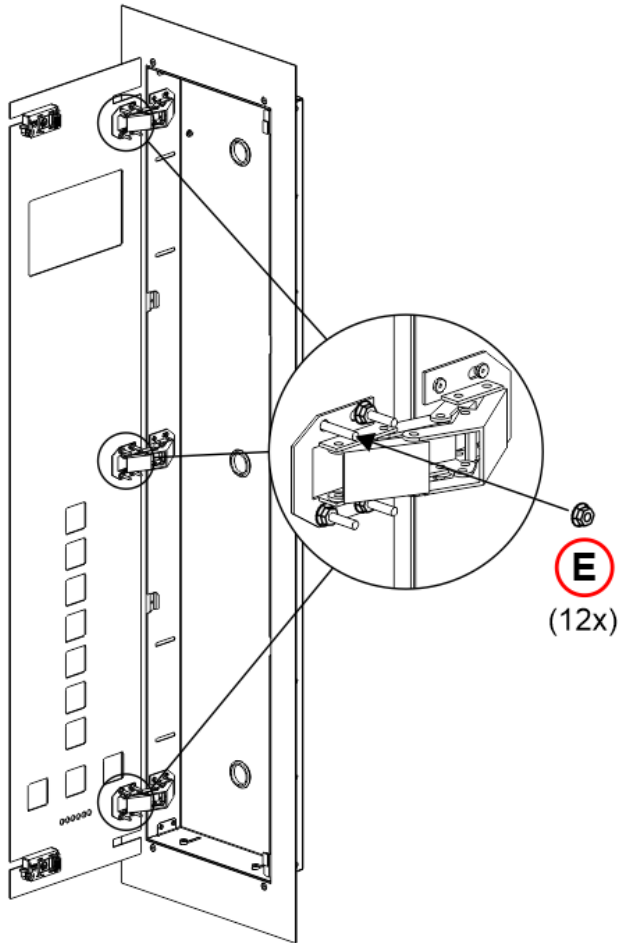
Insert the box up to the flap and fasten it (D)

[Phase 3] – Fold the flaps (See below)

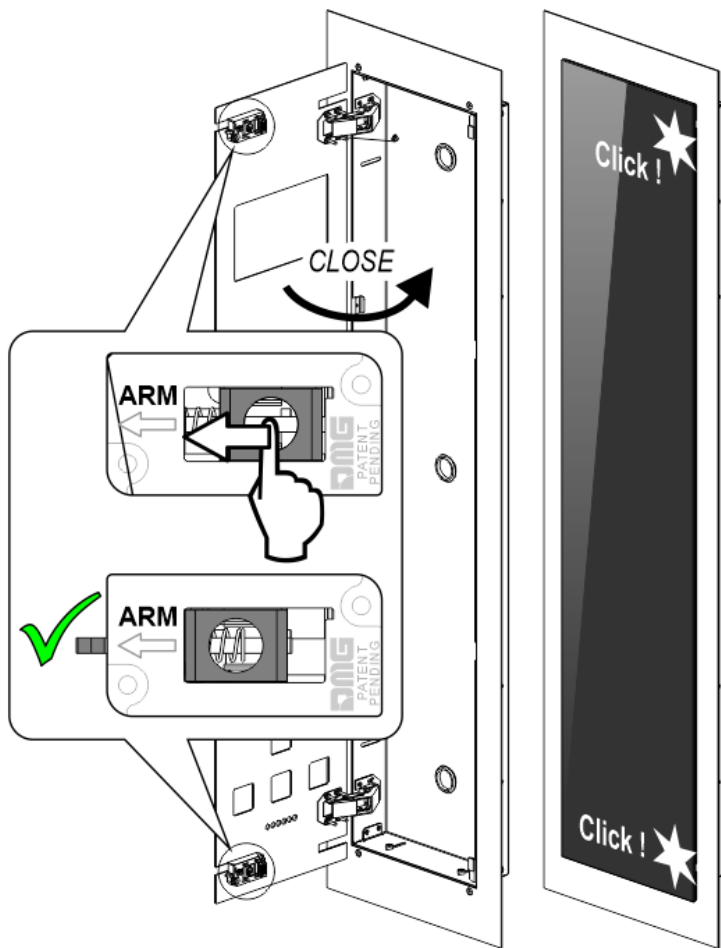




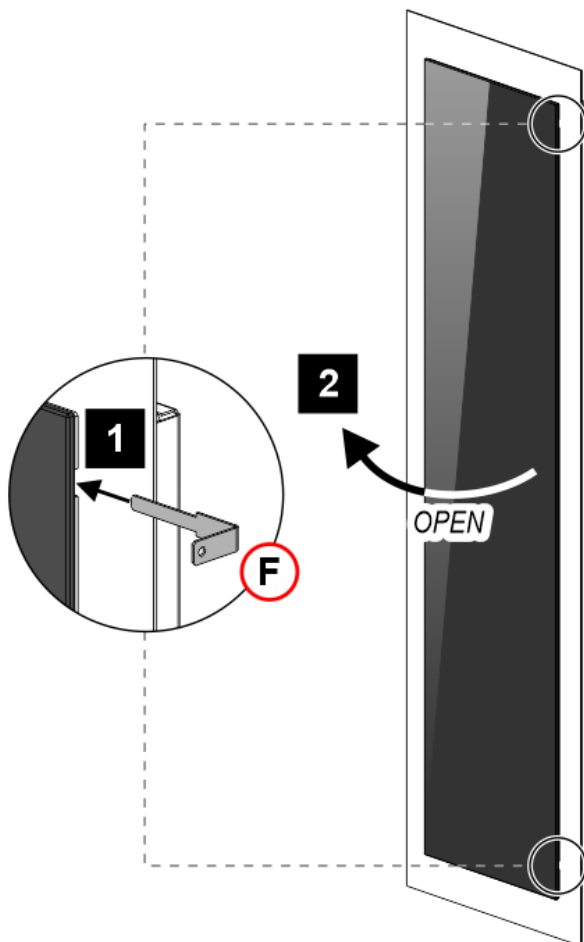
[Phase 4] – See below



[Phase 5] – See below



[Open the elevator car panel] – See below



- Floor panel -

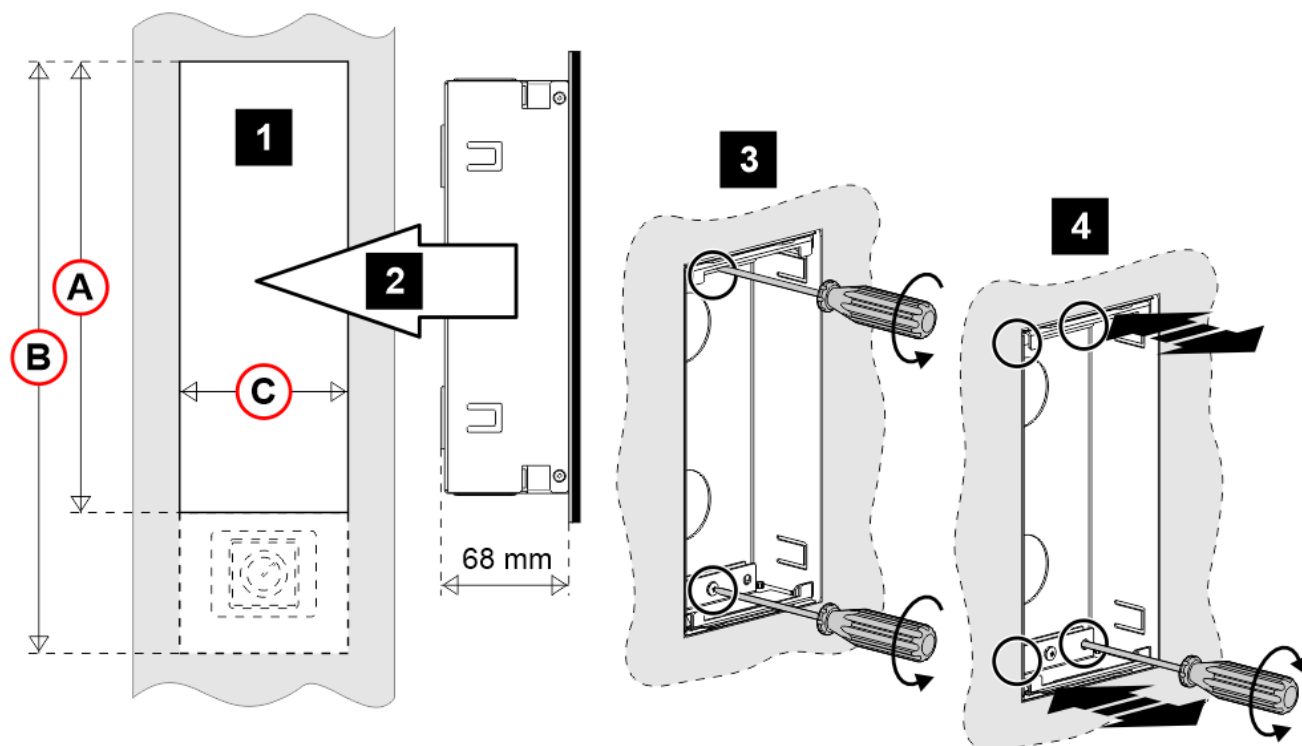
WALL mounting  
(with back box)

[Phase 1] – Cut-out.

[Phase 2] – Insert the back box.

[Phase 3] – Loosen the two central screws.

[Phase 4] – Adjust the depth of the two brackets.



A) – 222 mm (LOP h250 mm without key)

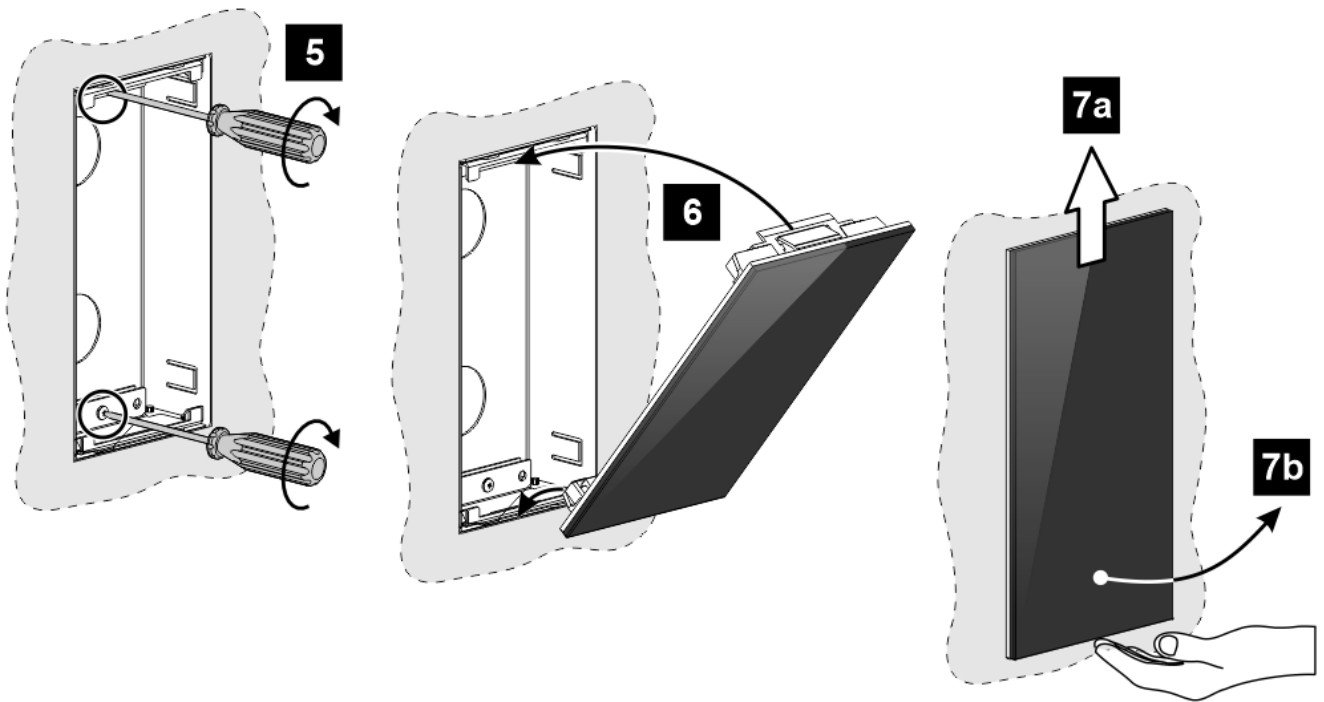
B) – 299 mm (LOP h320 mm with key)

C) – 82,5 mm (LOP 90 mm) / 124 mm (LOP duplex 130 mm) / 85 mm (LIP 90 mm horizontal)

[Phase 5] – Tighten the two central screws.

[Phase 6] – Close the floor panel.

[Phase 7] – Dismantling the floor panel.



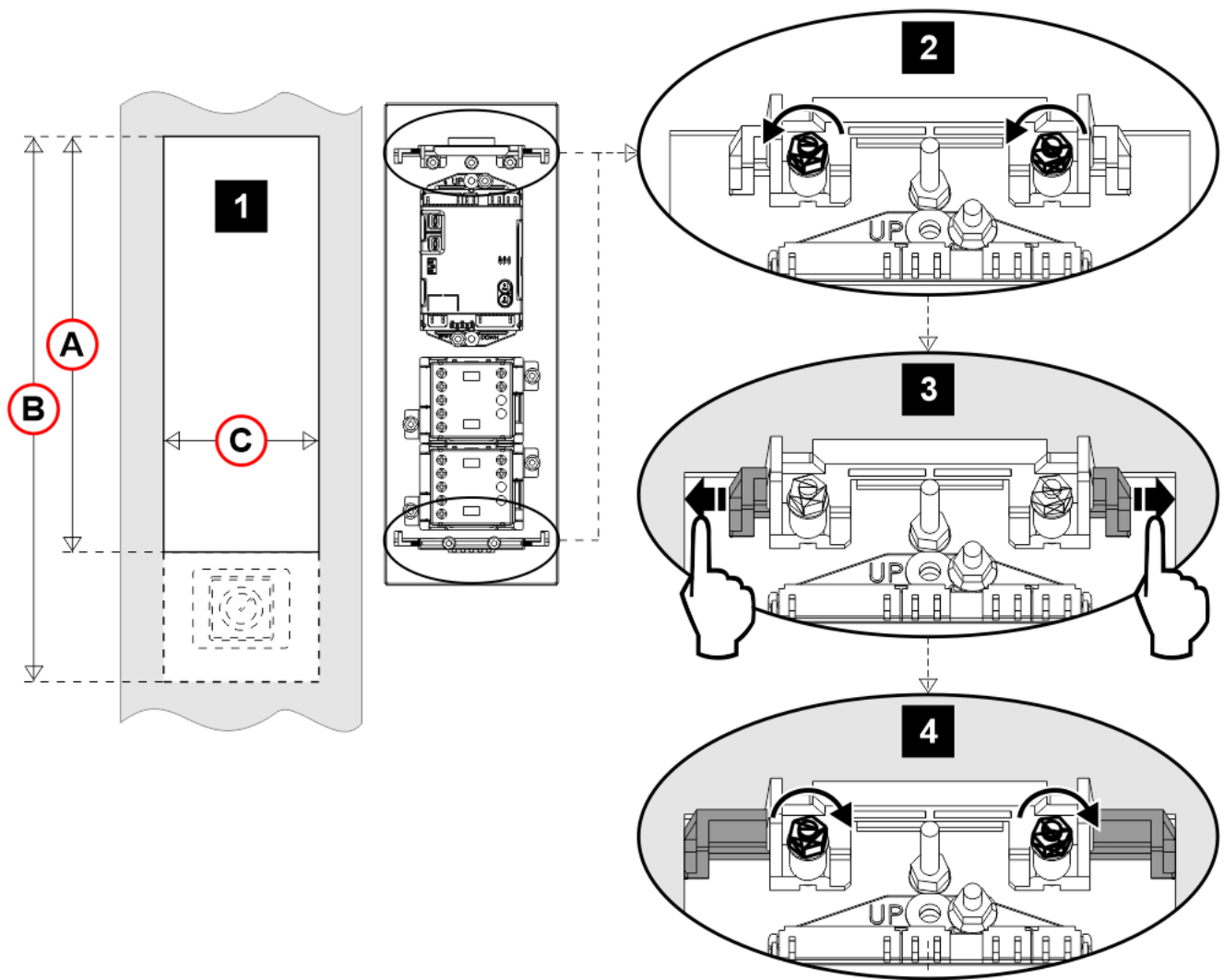
## DOOR FRAME mounting

[Phase 1] – Cut-out.

[Phase 2] – Loosen the 4 nuts.

[Phase 3]

[Phase 4] – Tighten the 4 nuts.



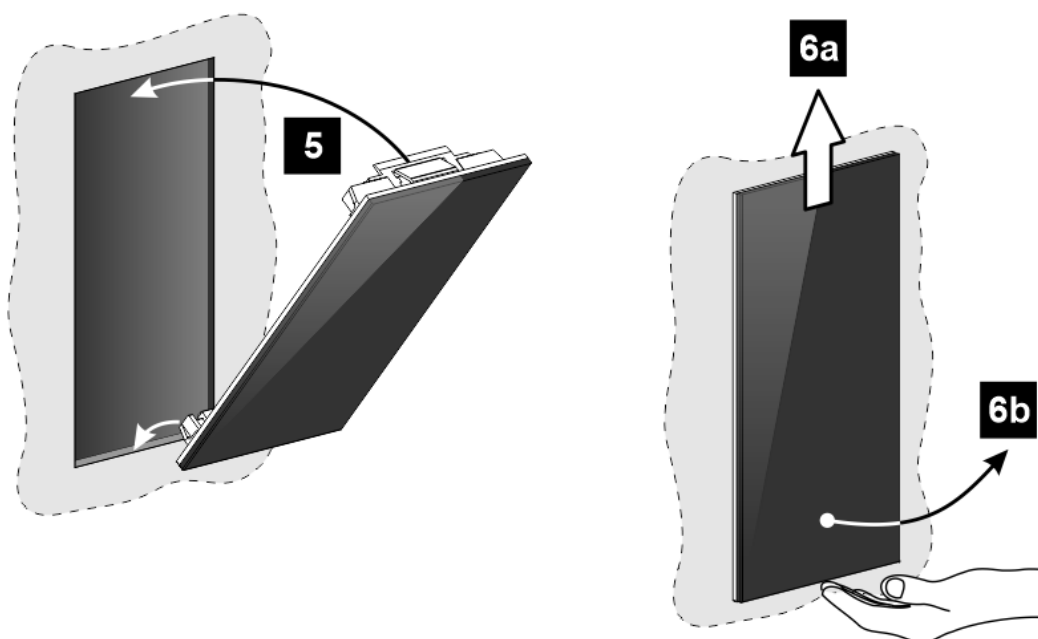
A) – 211,5 mm (LOP h250 mm without key)

B) – 288,5 mm (LOP h320 mm with key)

C) – 80,5 mm (LOP 90 mm) / 124 mm (LOP duplex 130 mm) / 82,5 mm (LIP 90 mm horizontal)

**[Phase 5]** – Close the floor panel.

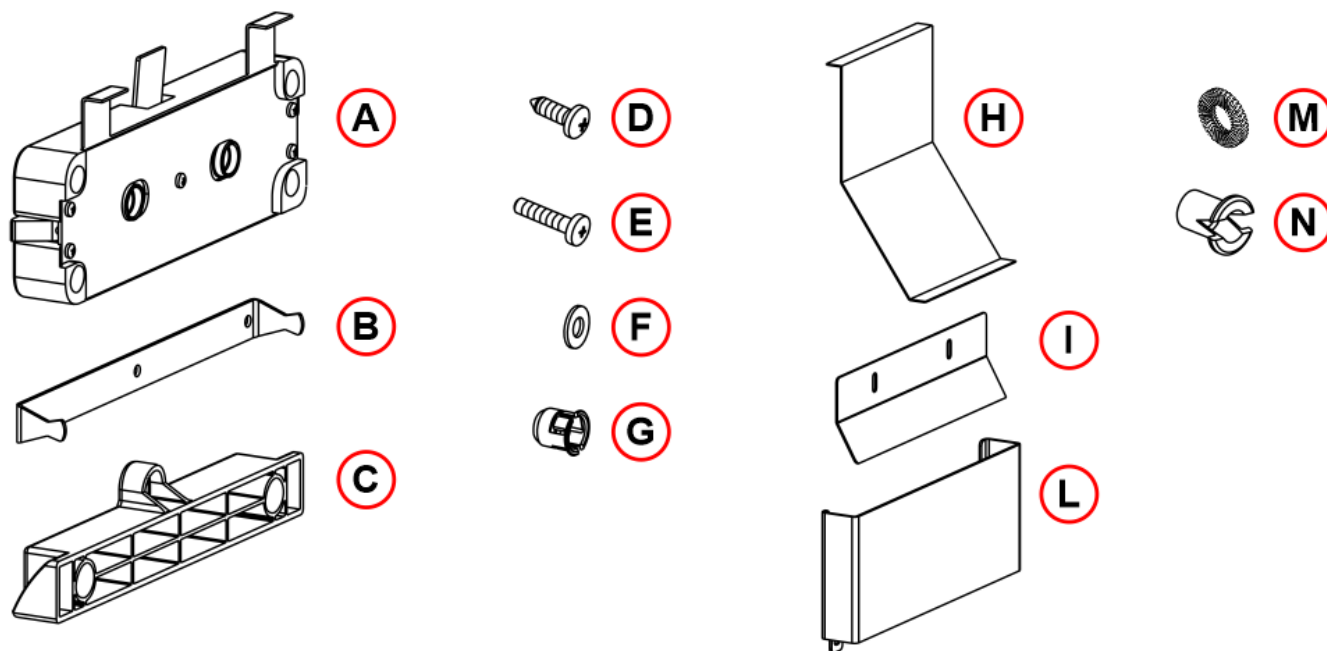
**[Phase 6]** – Dismantling the floor panel.



# SURFACE plates

## - Elevator car column panel -

[Mounting kit]



A) – 1 Lock      B) – 1 Central stirrup      C) – 1 Hinge      D) – 6 Self tapping screw 3,9 x 13

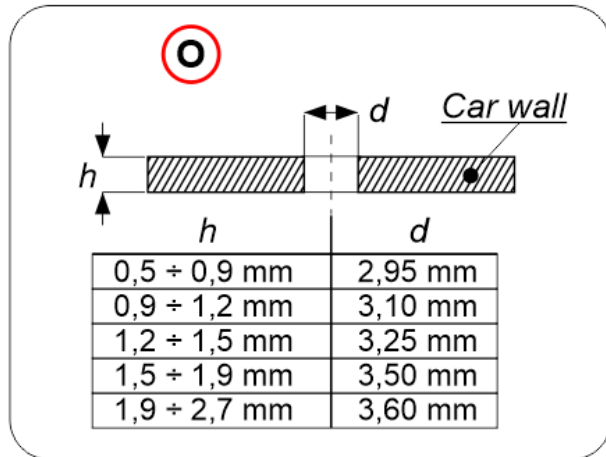
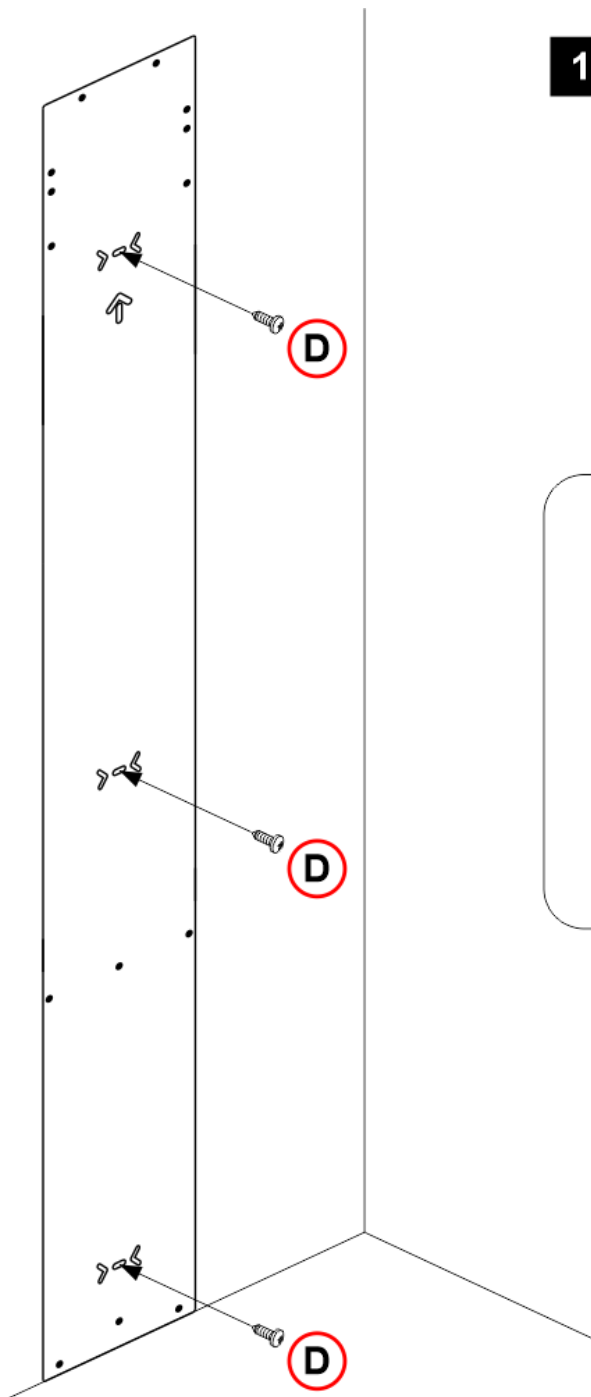
E) – 11 Screw M4 x 18      F) – 10 Flat washer      G) – 7 Round cage nut      H) – 1 Opening tool

I) – 1 Ceiling support      L) – 1 Ceiling adapter      M) – 4 Crinkle washer

N) – 4 Threated Polyammide bush M4

**[Phase 1]** – Approach the jig to the wall, drill the 3 holes and fix the jig with the screws (D). The central fixing is optional.

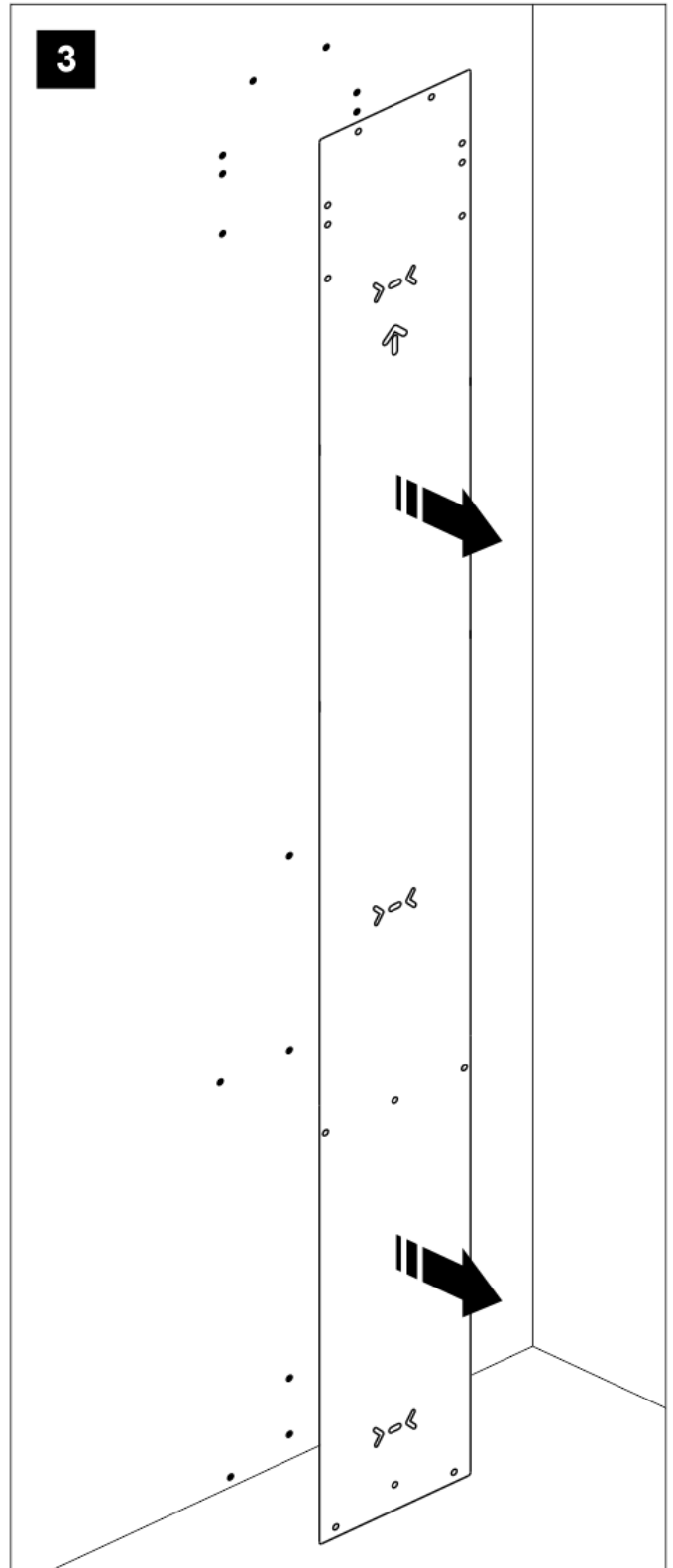
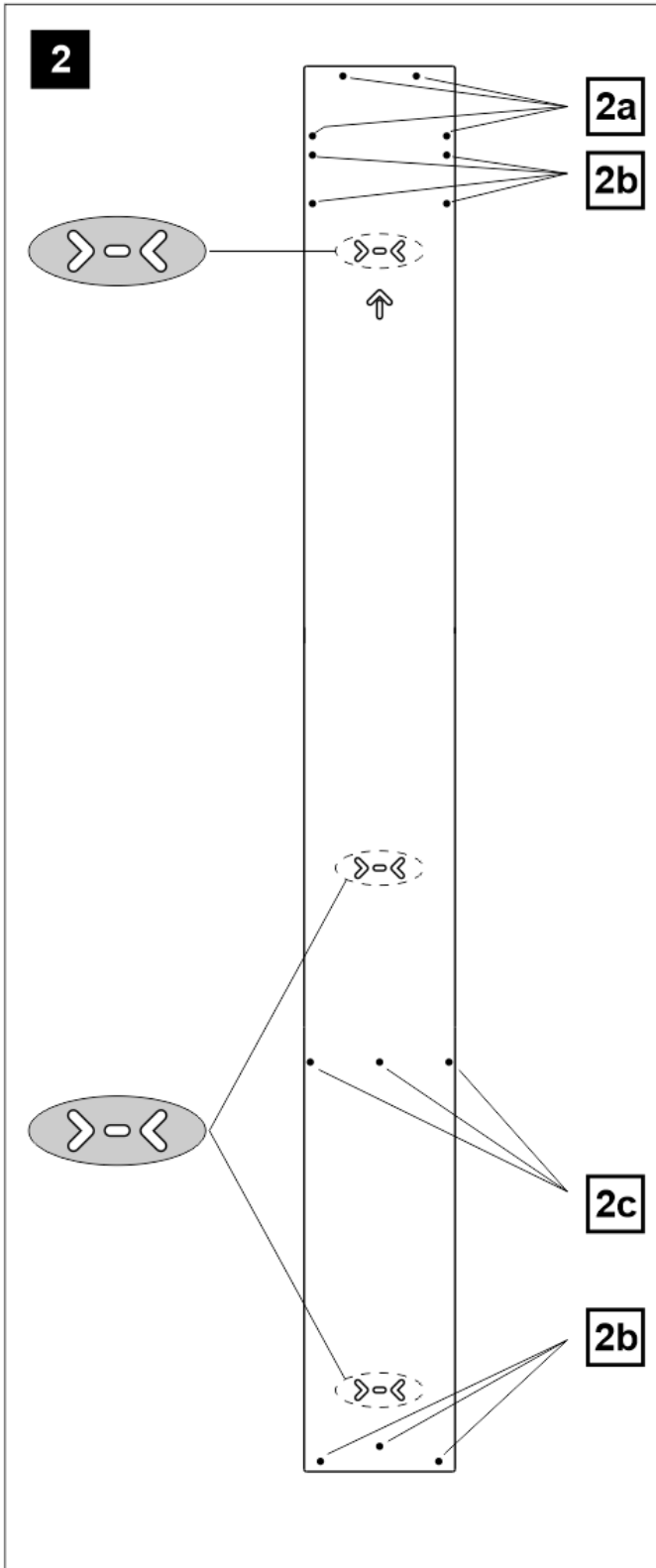
1



O) – Self tapping screw hole table ( $\varnothing$  3,9 mm)

[Phase 2] – Drill according to indications

[Phase 3] – Remove jig.



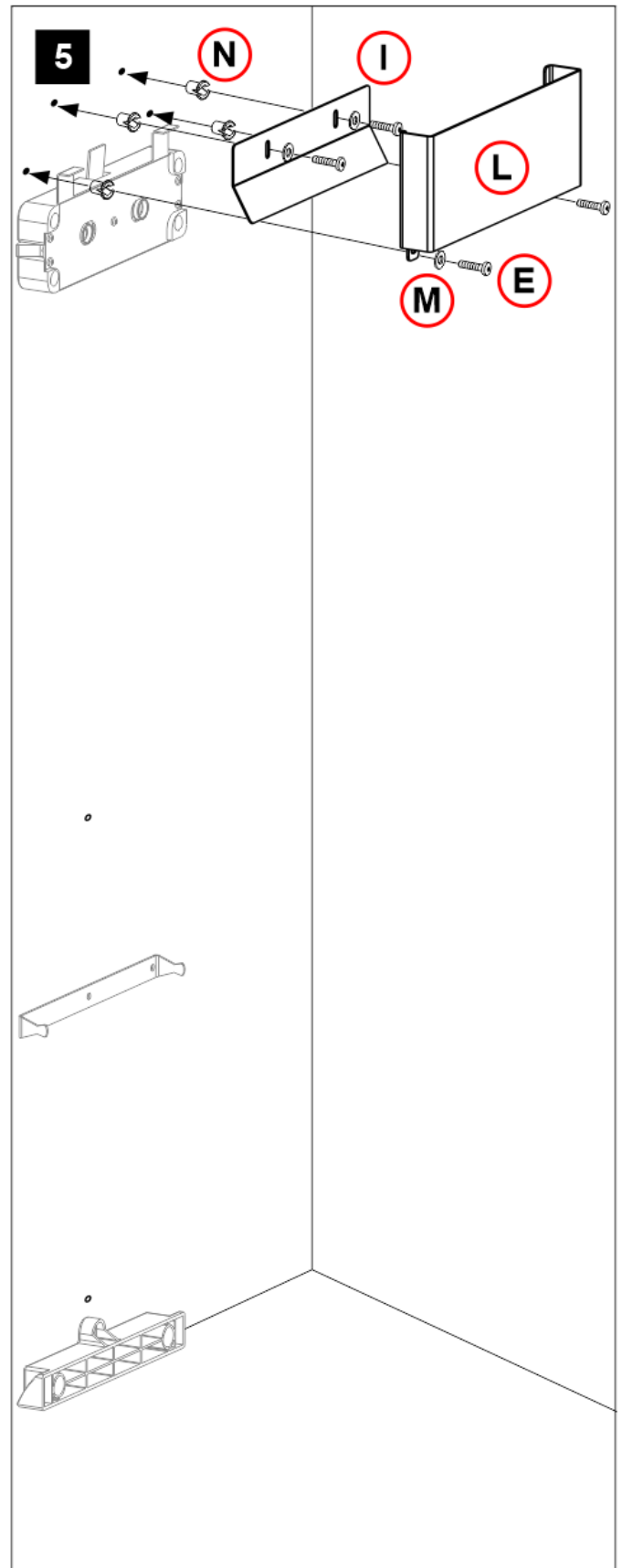
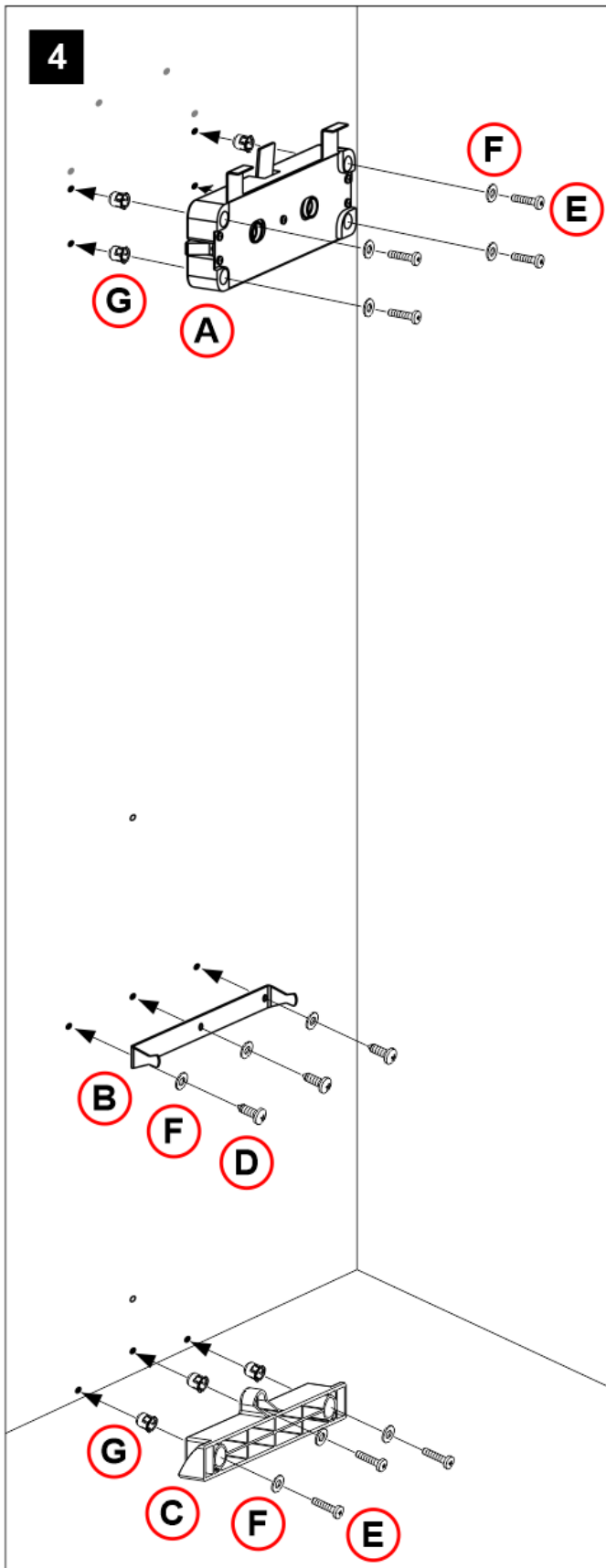
[2a] – Ø 6 mm

[2b] – Ø 10 mm

[2c] – Central stirrup (see “*Self tapping screw hole table*“)

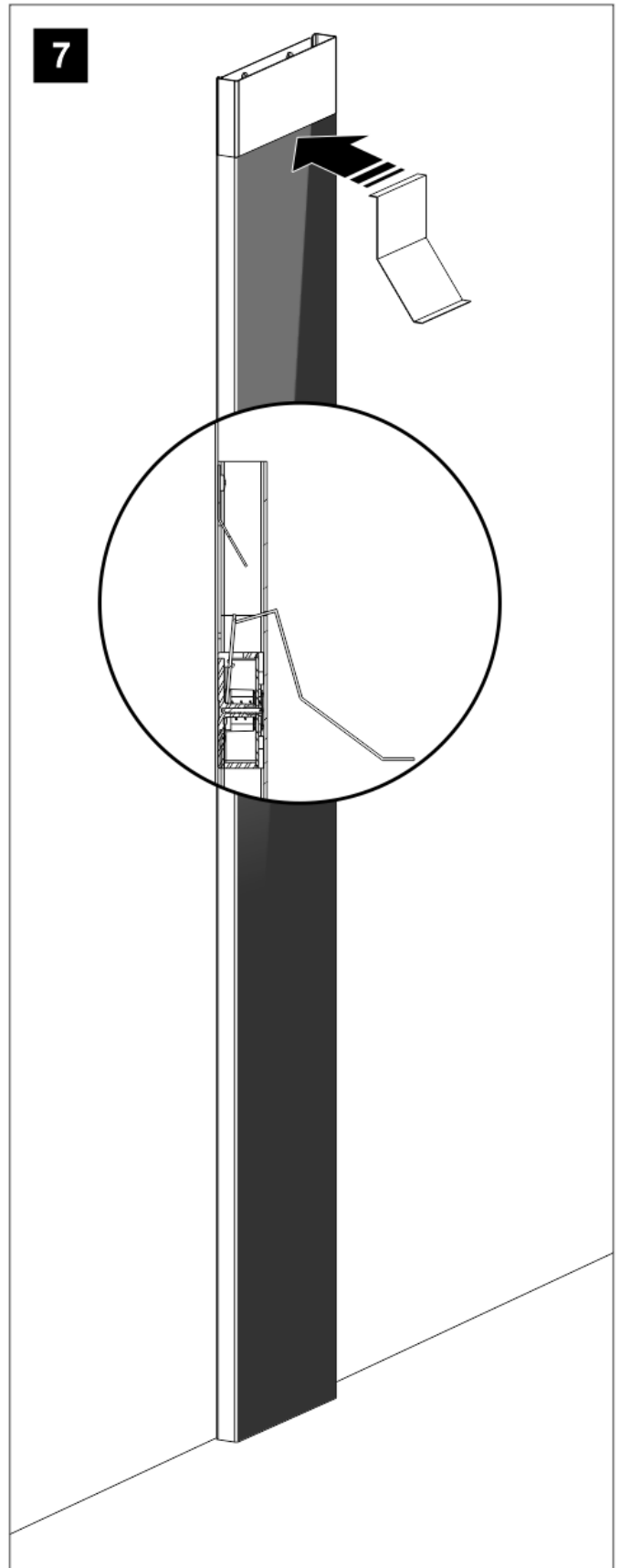
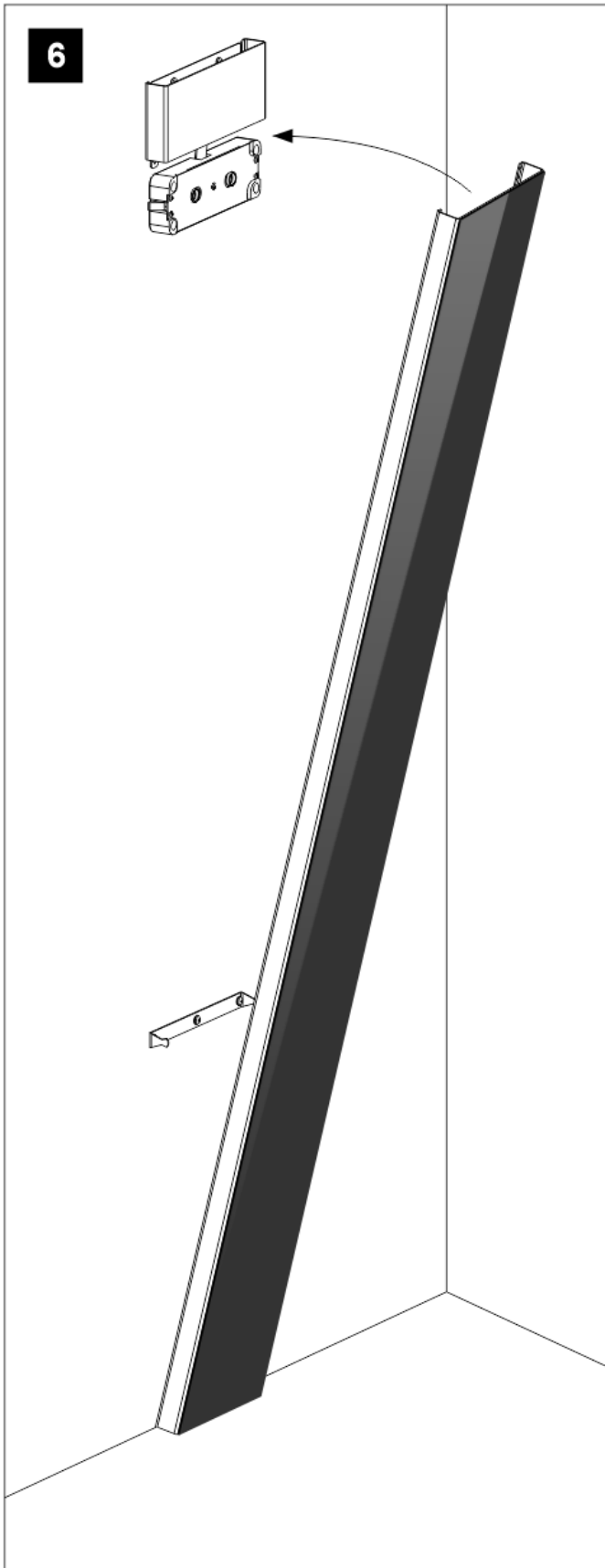
[Phase 4/5] – See below





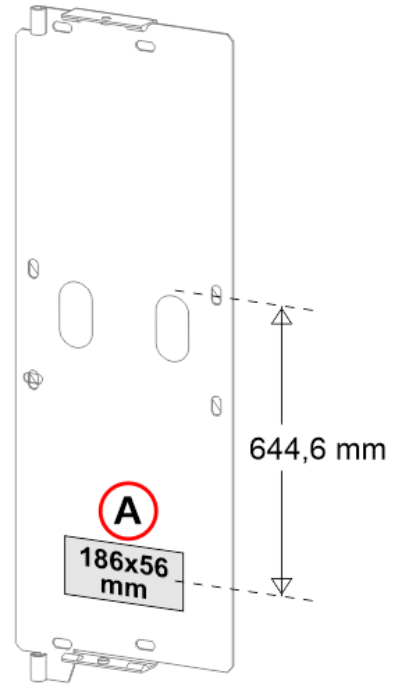
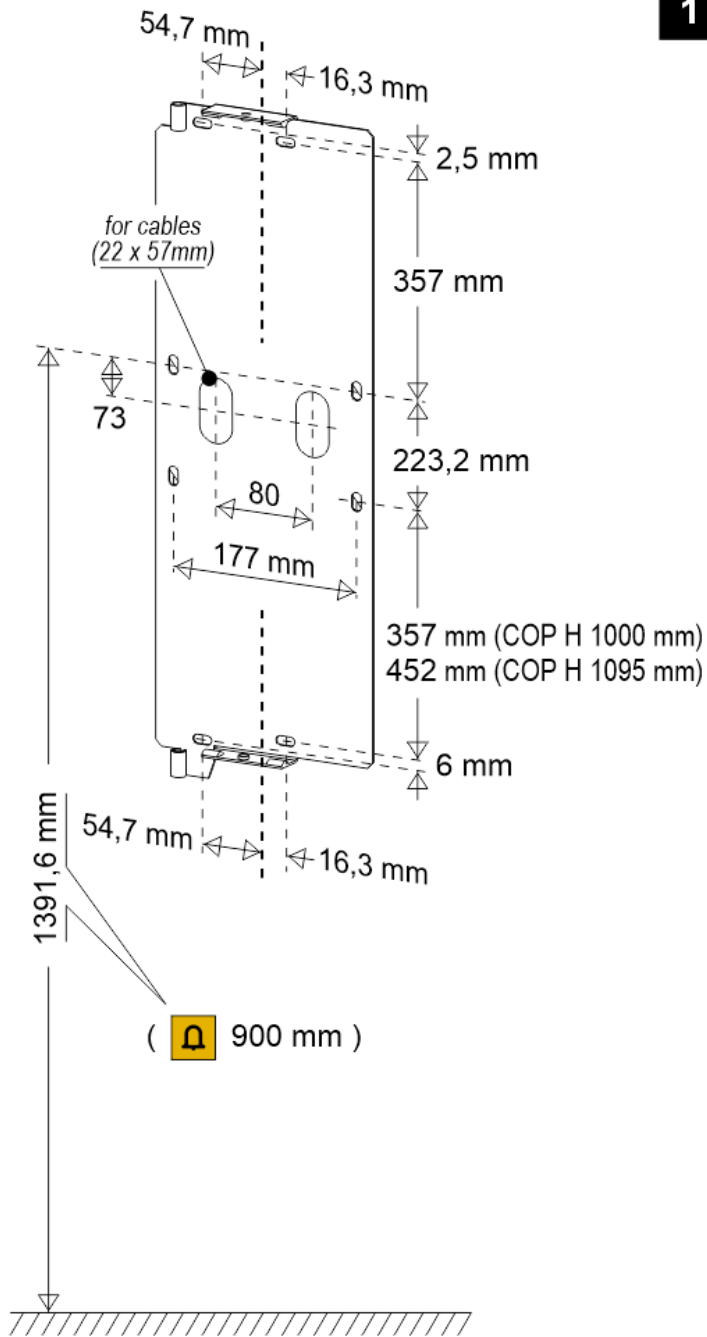
[Phase 6] – Insert the column into the hinge and hook to the lock.

[Phase 7] – Push the opening tool (H) to unlock and pull it to open the column.



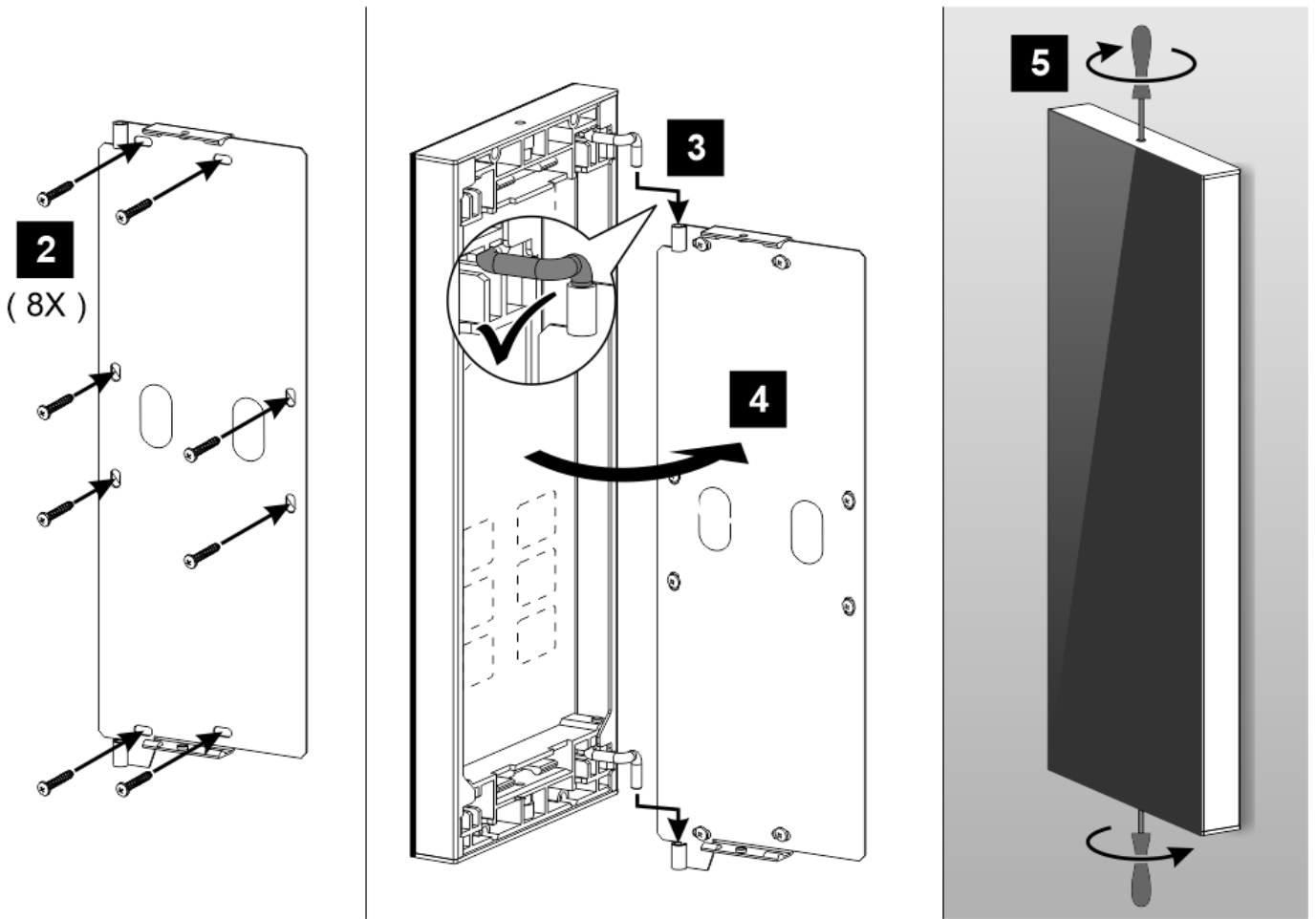
- Short elevator car panel -

[Phase 1] – See below



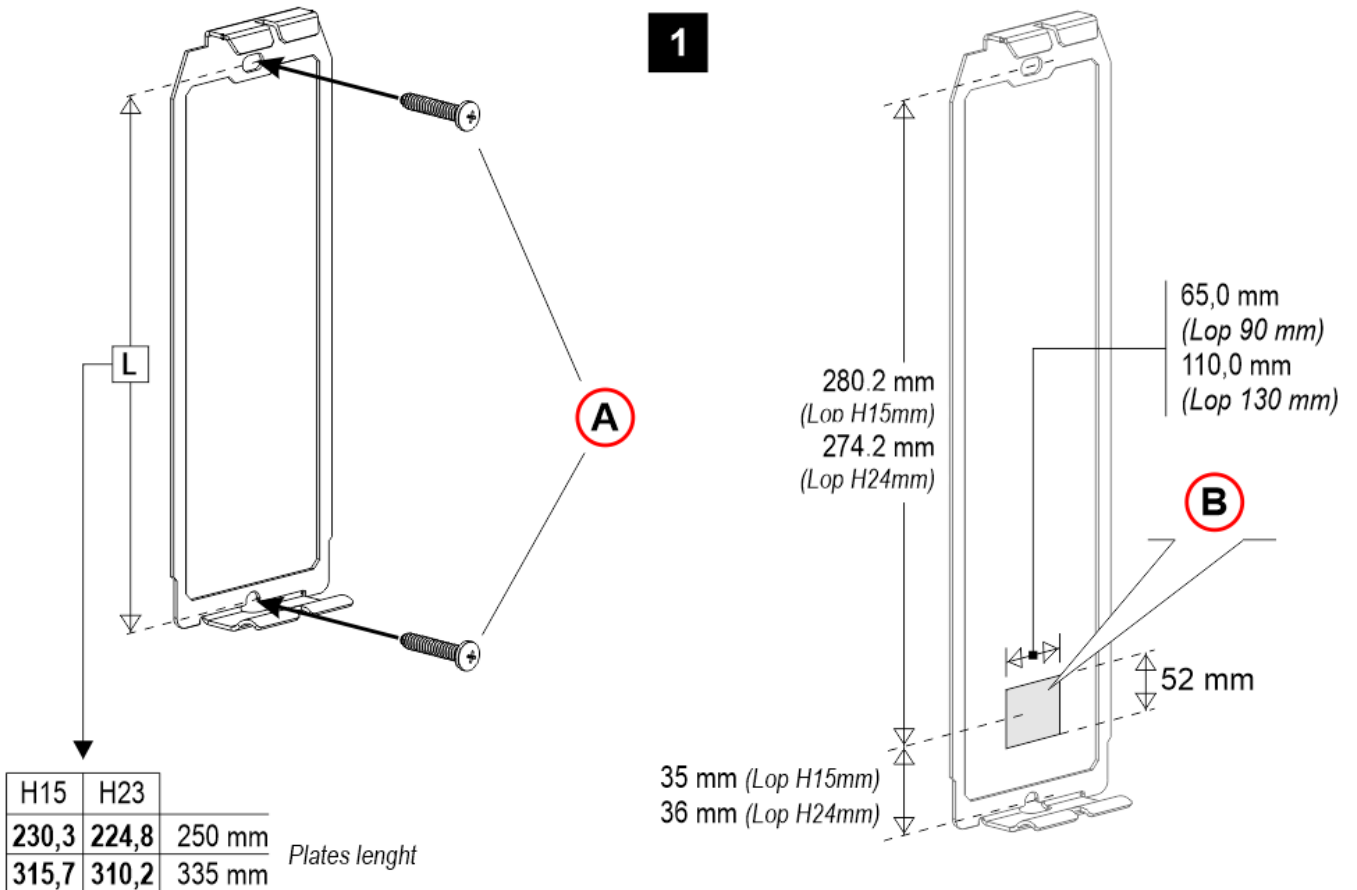
A) – Cut-out elevator car wall required for plates 1095mm high (with service keys)

[Phase 2÷5] – See below



- Floor panel -

[Phase 1] – See below

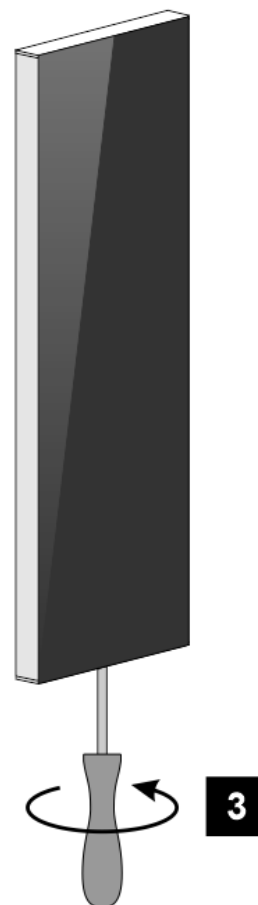
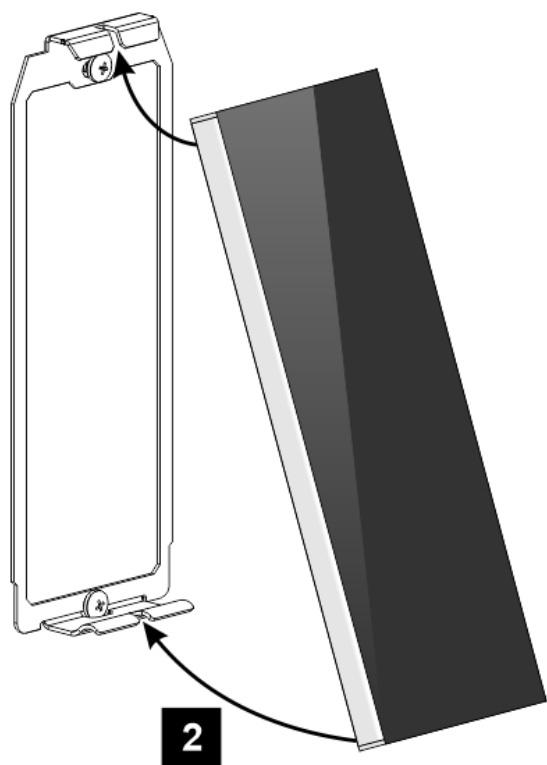


A) – 2 screws: 90 mm width plates / 130 mm width plates H23

4 screws: 130 mm width plates H15

B) – Cut-out wall required for 335mm length plates (with key)

[Phase 2/3] – See below



## TOUCH push button

[Click here to be redirect](#)

Updated on 24 Maggio 2021