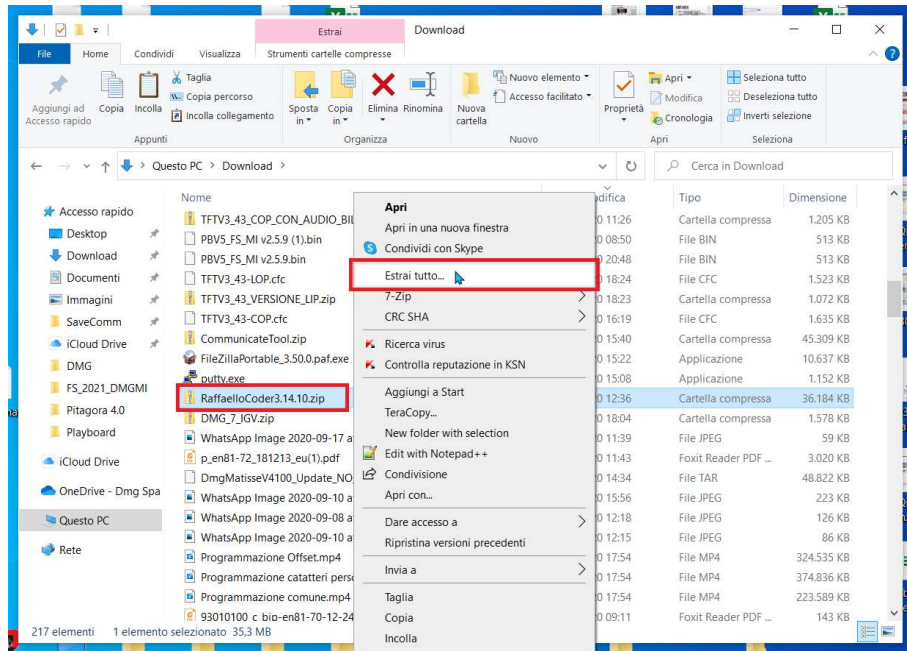


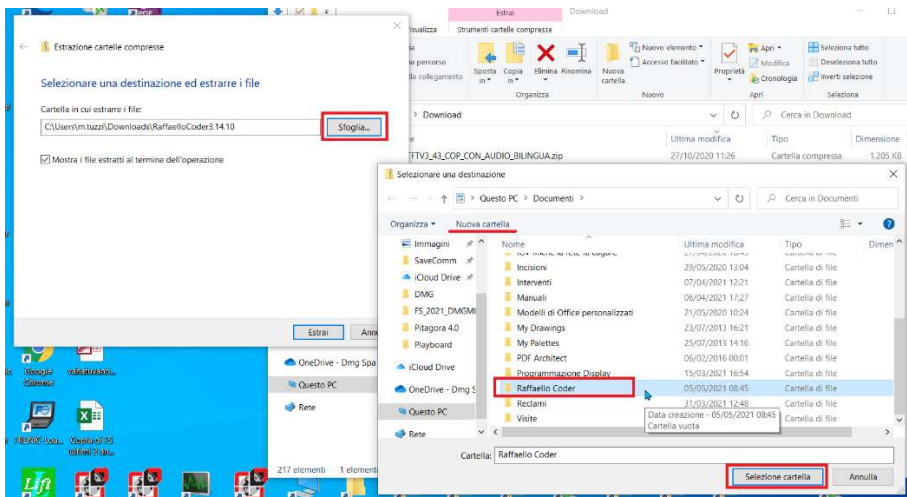


Raffaello Coder Installation Guide

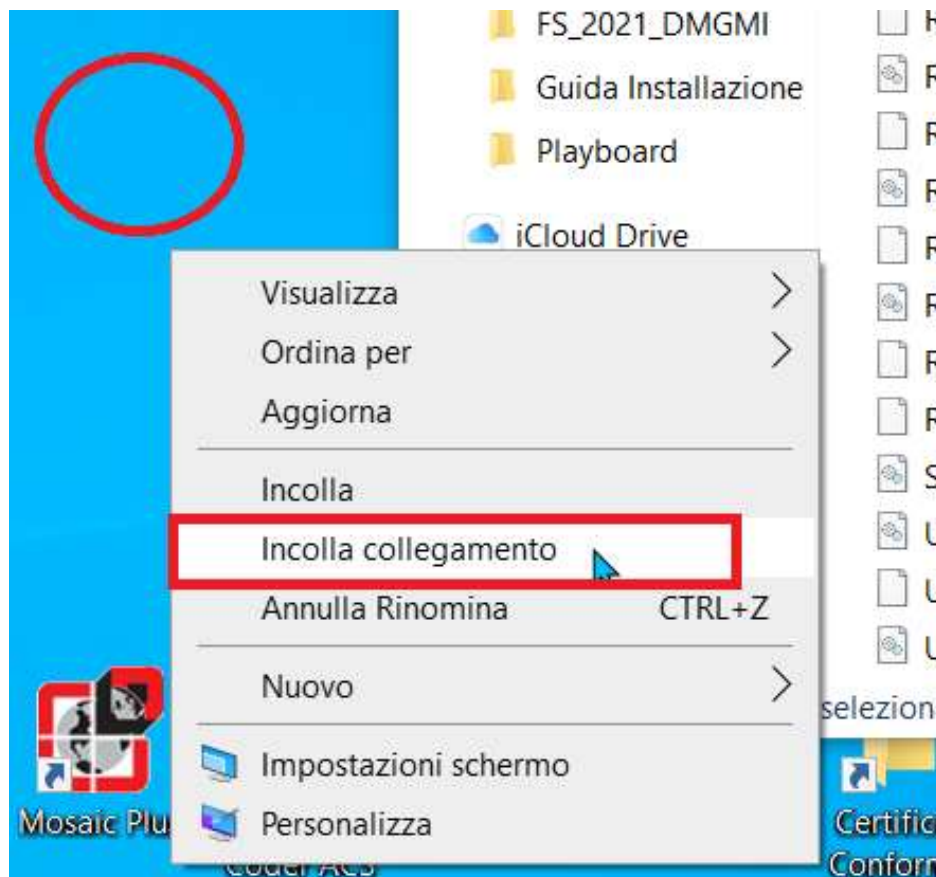
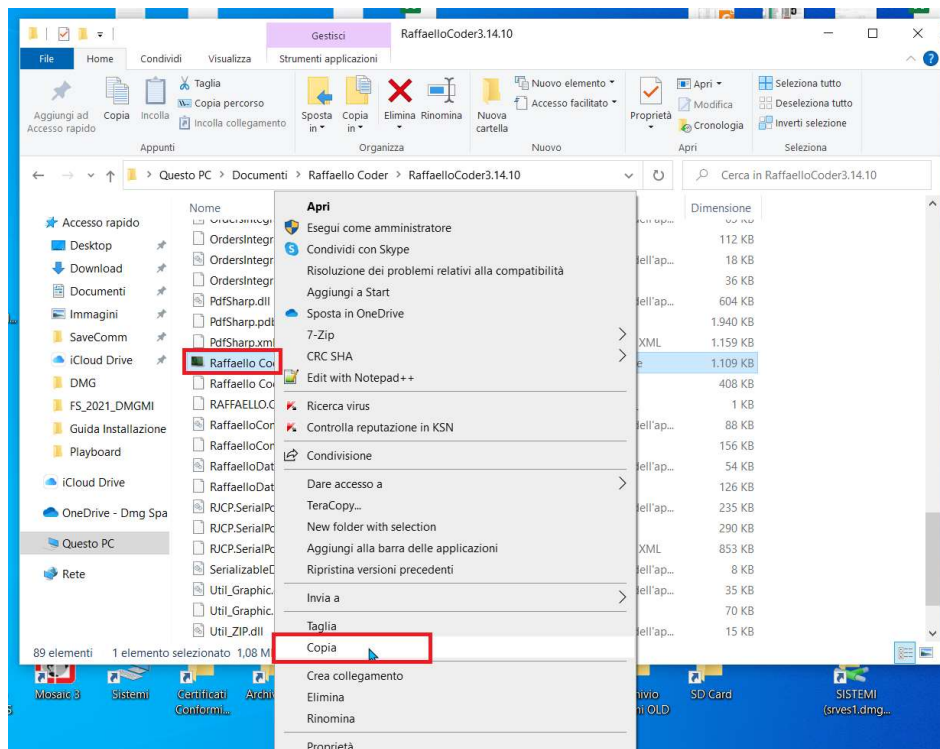
1. Once the software has been downloaded, go to the folder containing the .ZIP file and extract its content (Right mouse click -> **“Extract all...”**)



2. In the window which then appears select **“Browse...”** and create a new folder where you intend to install the software (in this example it's "Documents -> Raffaello Coder"). Confirm your choice by left-clicking on **“Select folder”**



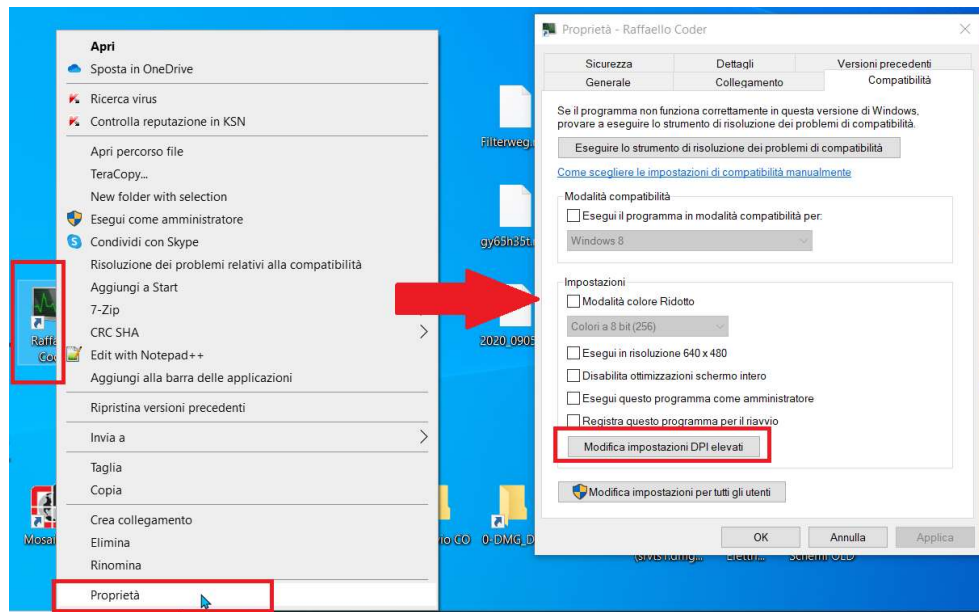
3. Left-click on **“Extract”** to unzip the software in the folder you previously selected, making sure the option **“Show extracted files when operation is complete”** is ticked, so that the destination folder will automatically open when the extraction is completed.
4. You should then create a shortcut to the software on your desktop. Right-click on the **“Raffaello Coder”** executable and select **“Copy”**. Then right-click on the desktop and select **“Paste shortcut”**



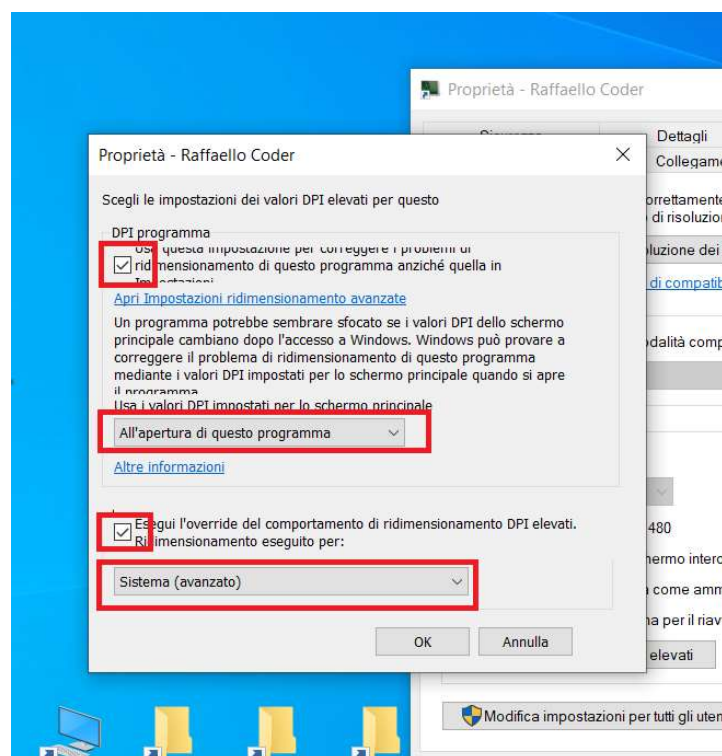
5. You can then rename the shortcut. You may then need to change some parameters to avoid distorting the software graphics (which will result in distorted graphic on the display itself) due to Windows high DPI settings.



Right-click on the Raffaello Coder shortcut on your desktop, select **“Properties”** and then the **“Compatibility”** tab. Left-click on the button at the bottom of the window labelled **“Modify high DPI settings”**

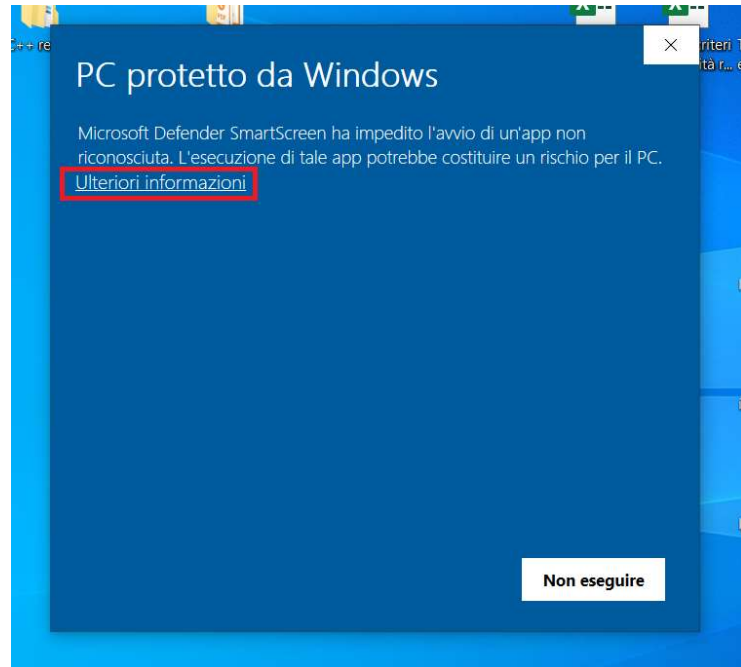


6. Tick both checkboxes and select **“On application launch”** from the first drop-down menu and **“System (Enhanced)”** from the second one. Close all windows left-clicking on the respective **“OK”** button

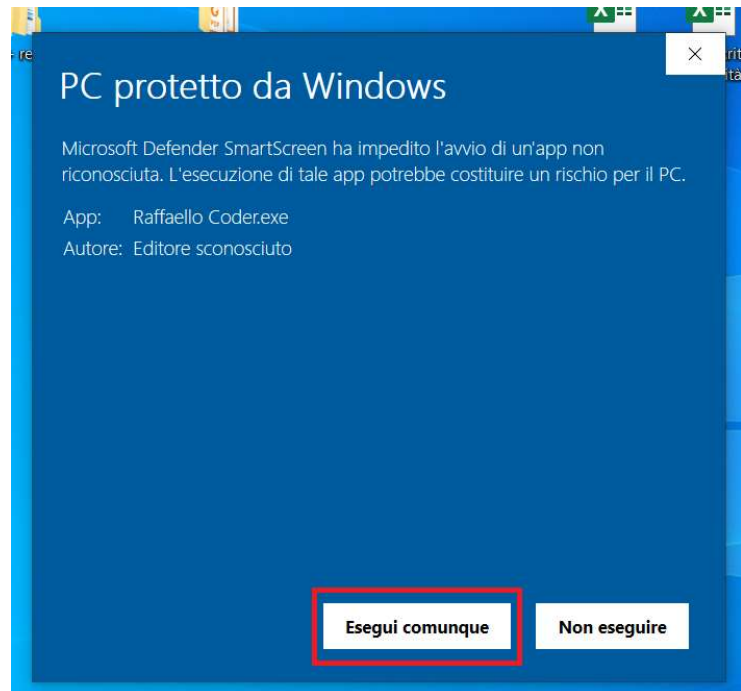




7. After powering on the display and connecting it to the PC using a USB-A to **mini-USB** cable, open the Raffaello Coder software by double left-clicking on the shortcut. Based on the Windows version you have installed, you may see a similar screen from the Smartscreen function.

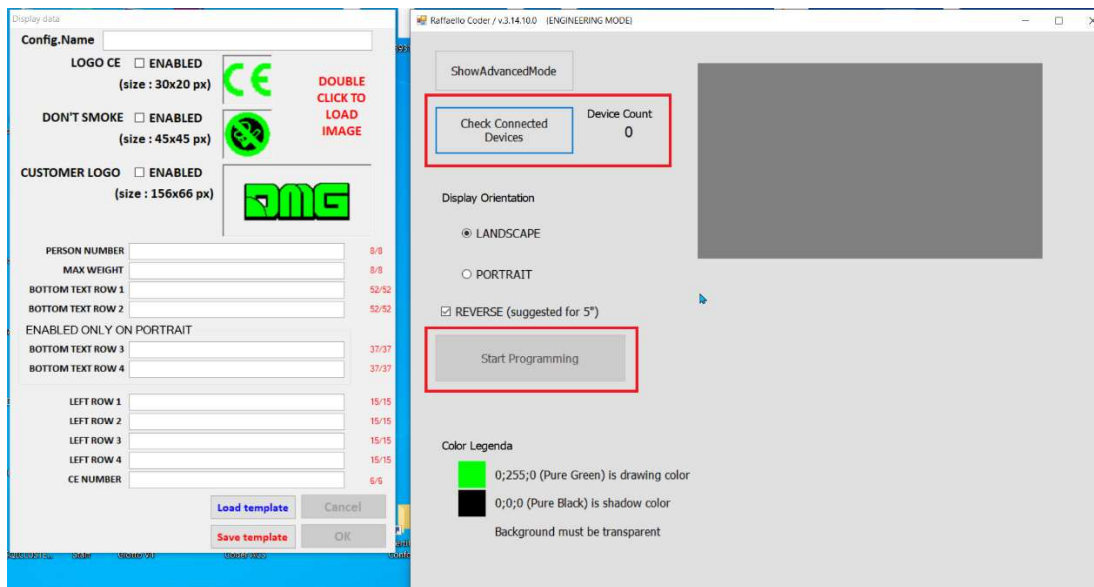


If that happens, just left-click on **“More info”** and then on the **“Run anyway”** button at the bottom of the window.

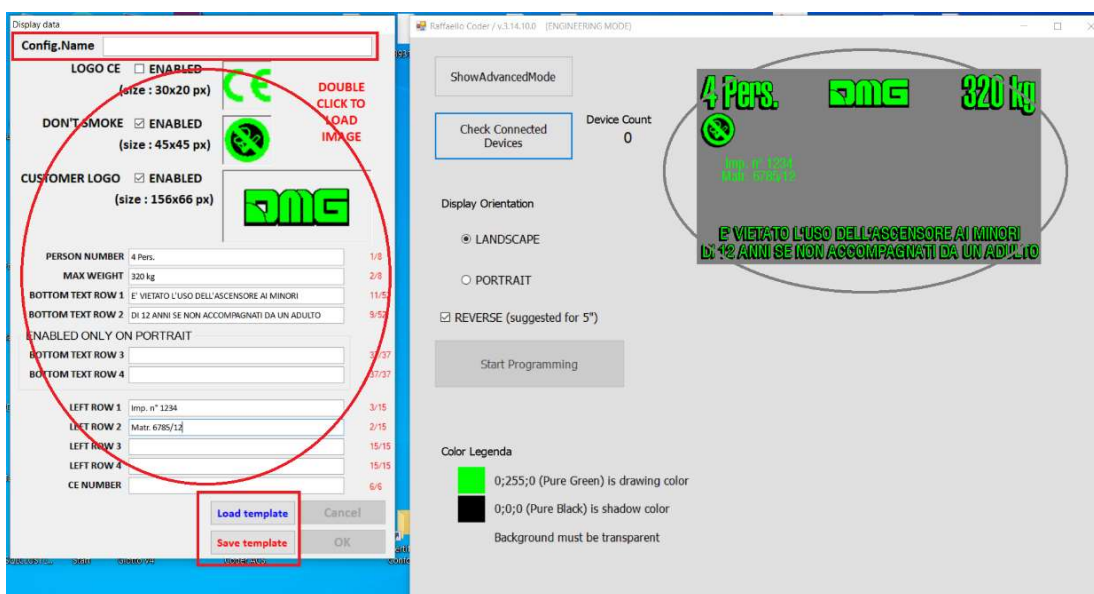




- After a few seconds, the software will launch and you will see two separate windows: on your left you have the Display Data panel where you can add all the installation info you want to appear on the Raffaello display, No Smoking and CE icons and a customer logo (which needs to be specifically prepared so that the display can then assign the symbols color set from the on-board menu). On the right window you can see the number of connected devices (next to the refresh button, which can be used to force a new check of all connected displays), a preview of the rendering of the data plate and the button which actually starts transferring the data on the actual display.



- Once you have filled the left panel with all the display data, you can assign a name to the plate configuration by left-clicking on the “Save Template” button at the bottom; if you do this, you can quickly load all the data at once in a later moment without having to manually input all the data once again.



- You can then send the data to the display by left-clicking on the “Start Programming” button on the right window. When data transfer is complete, the display will automatically reboot and when



it syncs with the Raffaello Coder software, a pop-up window will appear confirming the procedure was successful; should any issue arise during data transfer, the pop-up window will contain the error details.

TROUBLESHOOTING

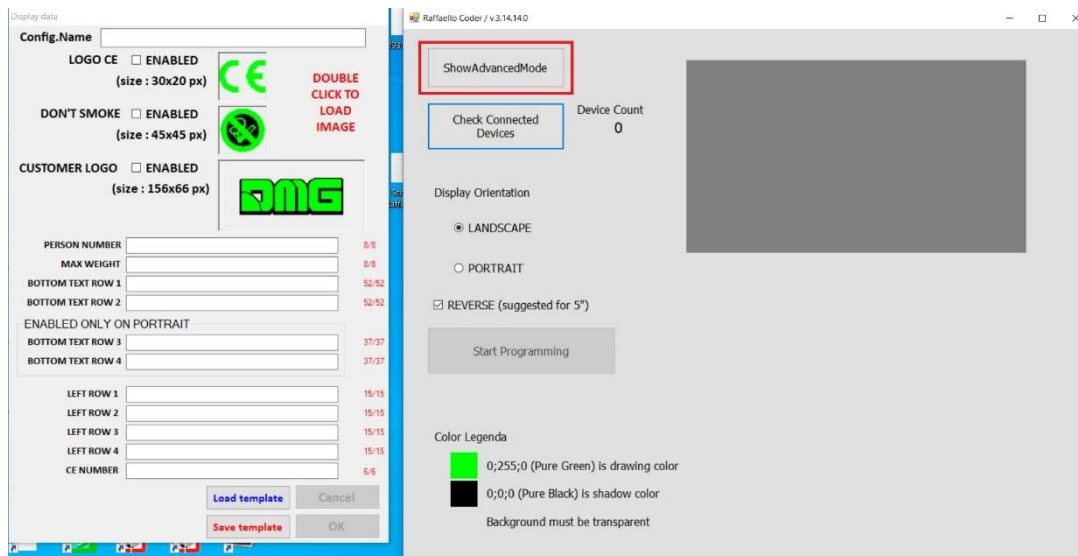
There's a small chance Windows will not recognise the display once you connect it to your PC. If the connected devices count is still showing "0" after left-clicking on the "Check Connected Devices" button



please follow these steps to install the correct driver.

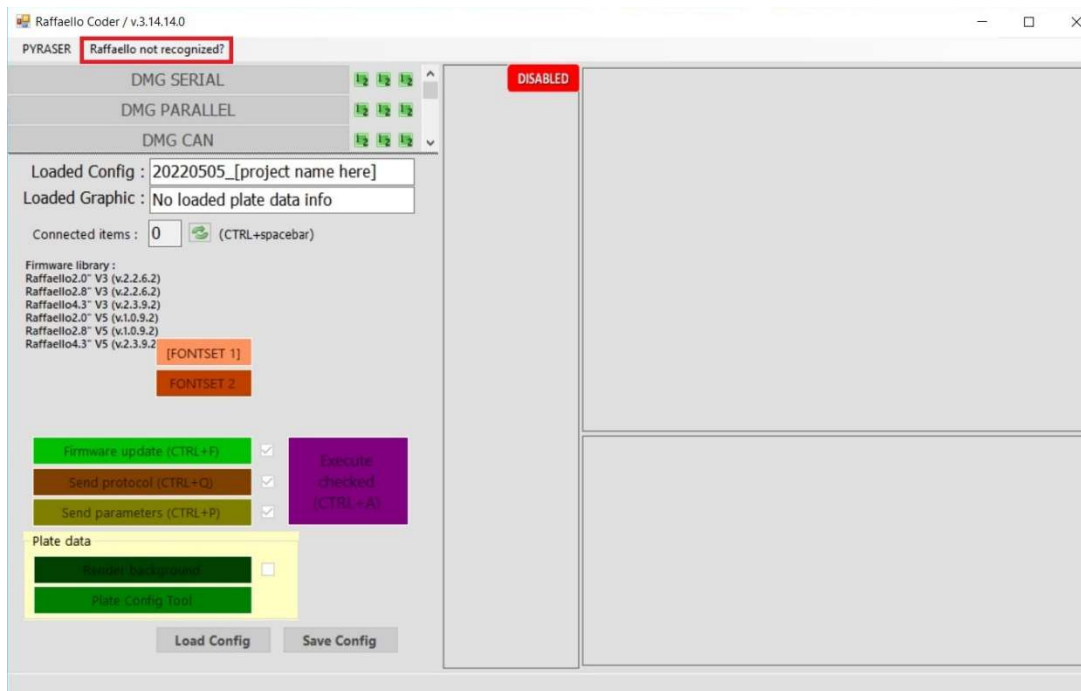
WARNING: in order to complete the driver installation, you need to use an Administrator-level Windows account. If you're using a Standard account, please contact your IT Office or System Administrator to continue.

- Open the advanced interface in Raffaello Coder by left-clicking on "**ShowAdvancedMode**"

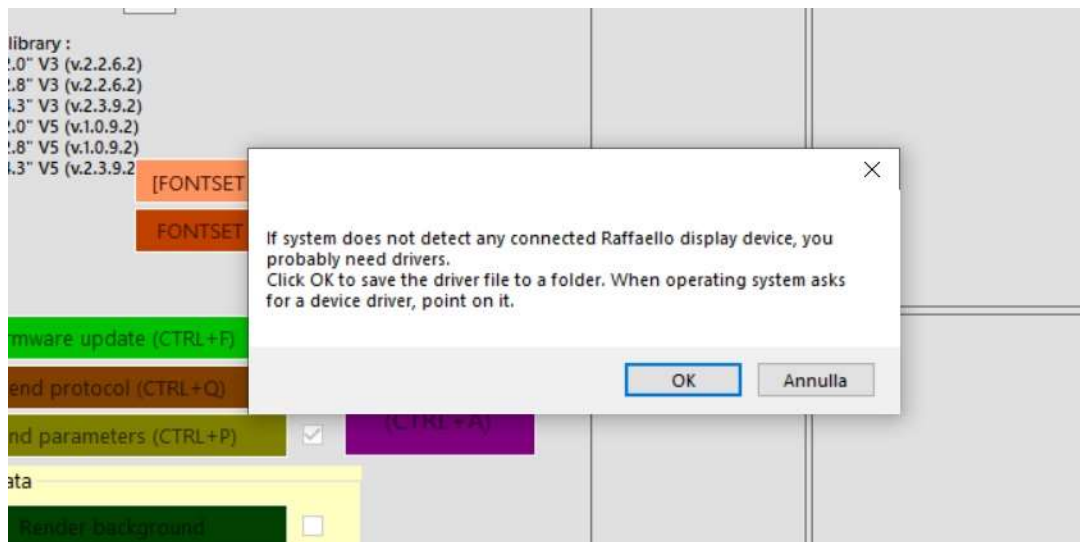




- b. Select “Raffaello not recognized?” from the menu bar

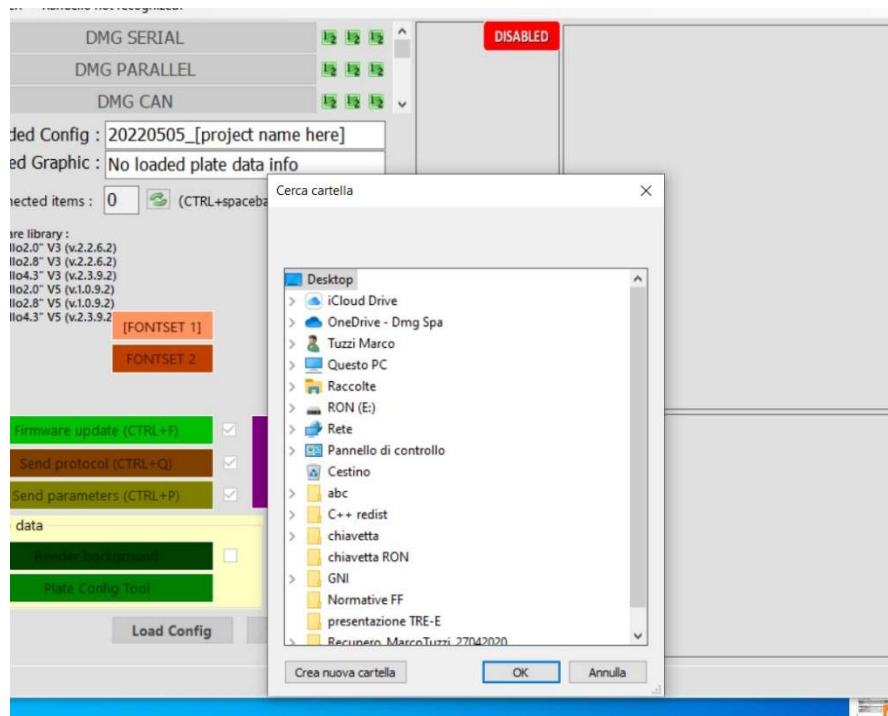



- c. A pop-up window will appear with instructions on how to proceed to install the device driver. Left-click **OK** to save the driver file on your PC

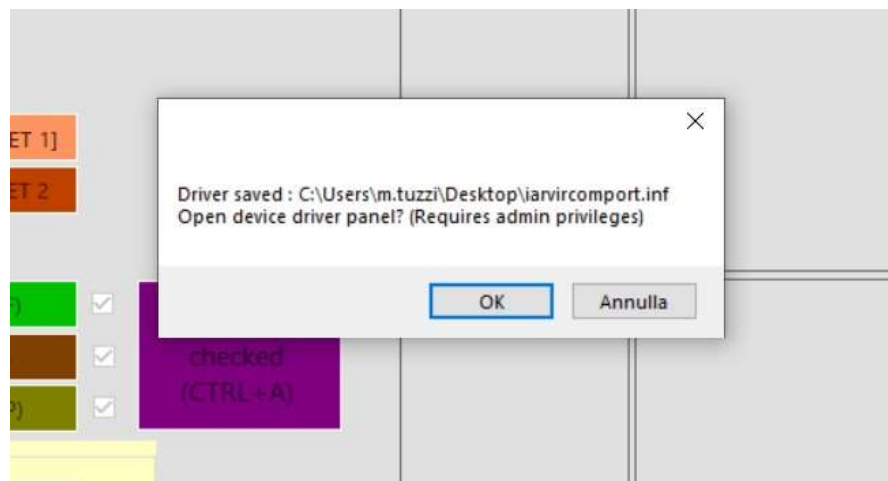




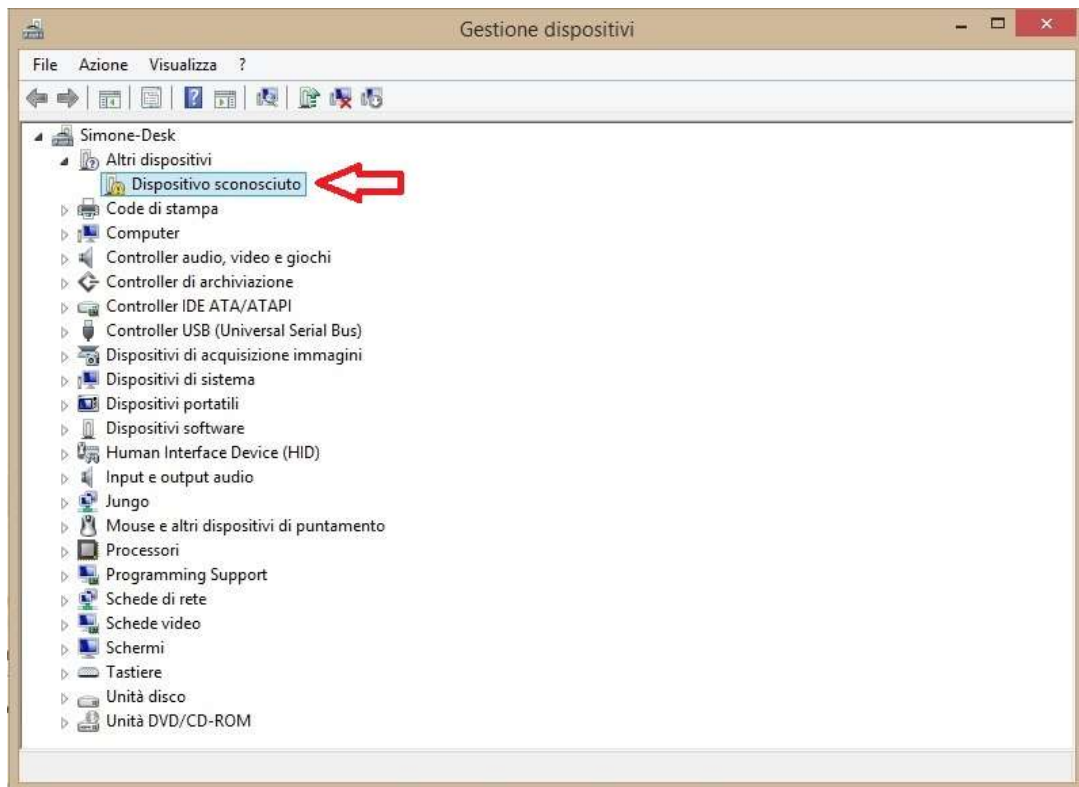
- d. In the dialog that will appear you can choose a folder where the driver file will be copied to. In the example below, the Desktop has been selected as the destination folder..



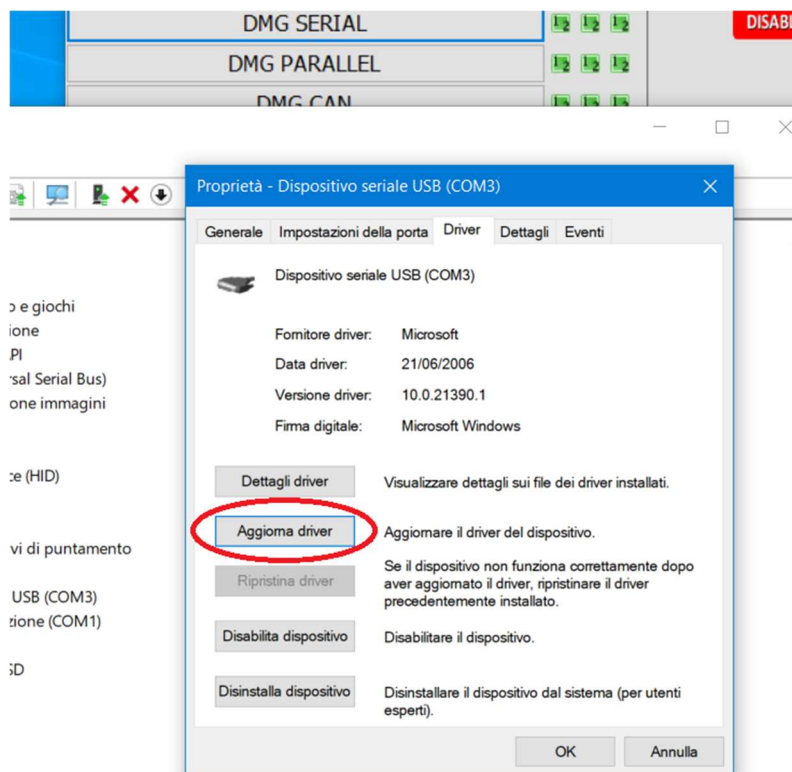
- e. The driver .INF file will be copied in the selected folder  and another window will pop-up allowing to quickly open the Device Manager panel and proceed with the driver installation. Left-click **OK** to continue.



- f. The Device Manager panel will appear (you may first see small pop-up window which warns you that you won't be able to modify any setting in the following panel without Administrator-level access); at the top of the device list, under "Other devices" you will notice an "unknown device". Select it by left-clicking on it, then right-click on it and select "**Properties**"

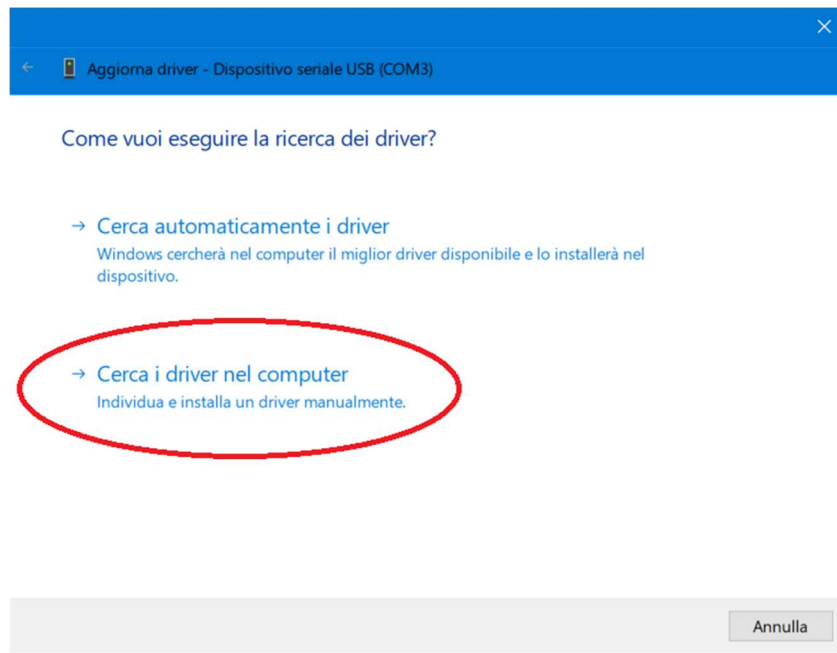


- g. Left-click the “**Update driver**” button in the newly opened window. Is all buttons are greyed-out except “Driver details”, you are using a Standard account and you will need to contact your IT Office to continue (or just install the Raffaello Coder software on a different computer where you have an Administrator-level account)

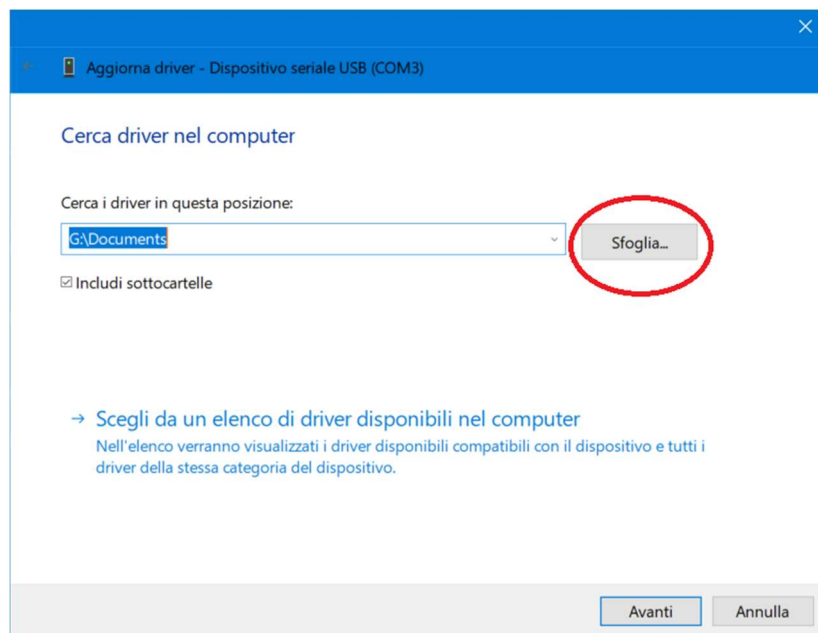


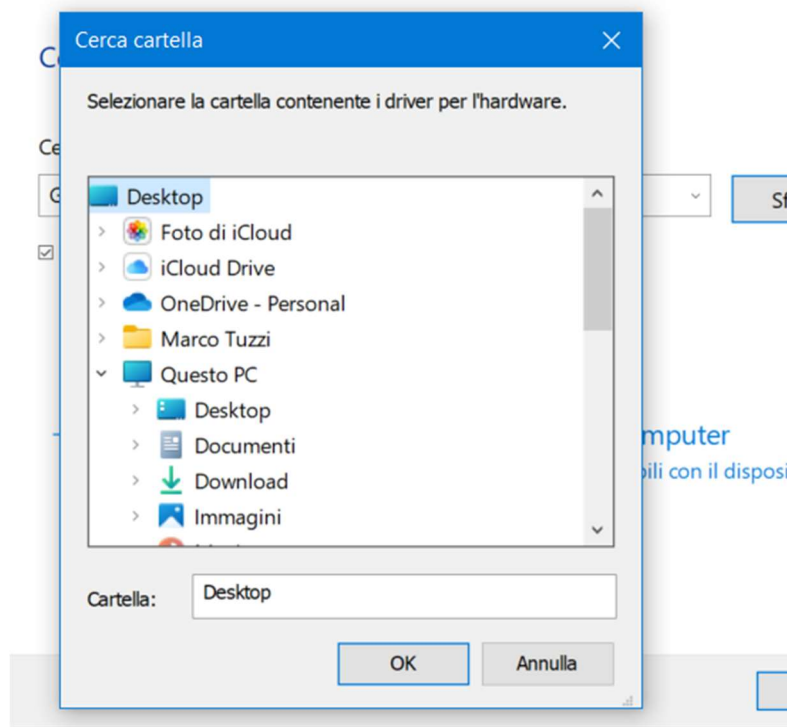


- h. Select “**Browse my computer for driver software**” in the following window



- i. Left-click on “**Browse...**” and select the folder where you saved the driver file on step **d** (in our example, choose Desktop). Left-click **OK** to confirm.





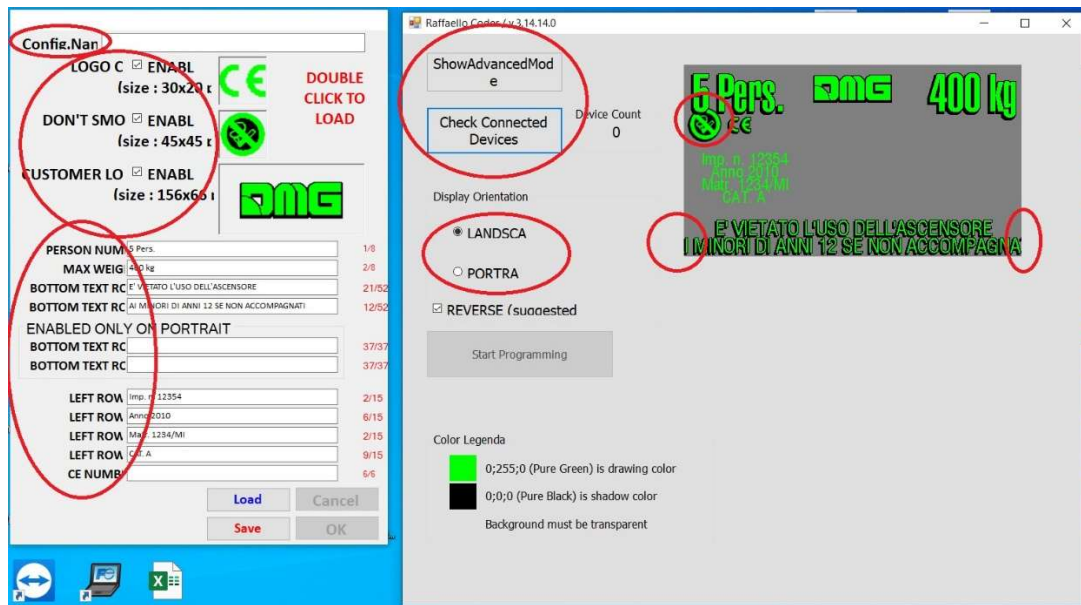
- j. Left-click “**Next**” to have Windows look for the driver in the selected folder. Follow the on-screen instructions that may vary according to the version of Windows you are using. Generally you will advance in the procedure by left-clicking on “Next” in the bottom-right corner of the driver installation window. When the installation is complete, you will only see a “Close” button.

Windows will now be able to correctly identify any Raffaello display you connect. Close the “Raffaello Coder” software, restart it and make sure the “Device Count” then reads “1”.

You can then proceed as shown on steps **8 to 10** in this guide.

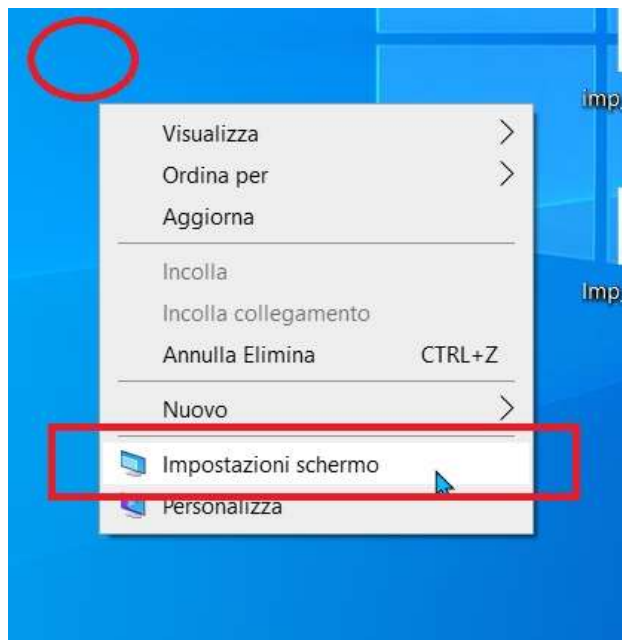


Should the software graphics appear misaligned / cut-off and/or text overlap (as you can see in the picture below),



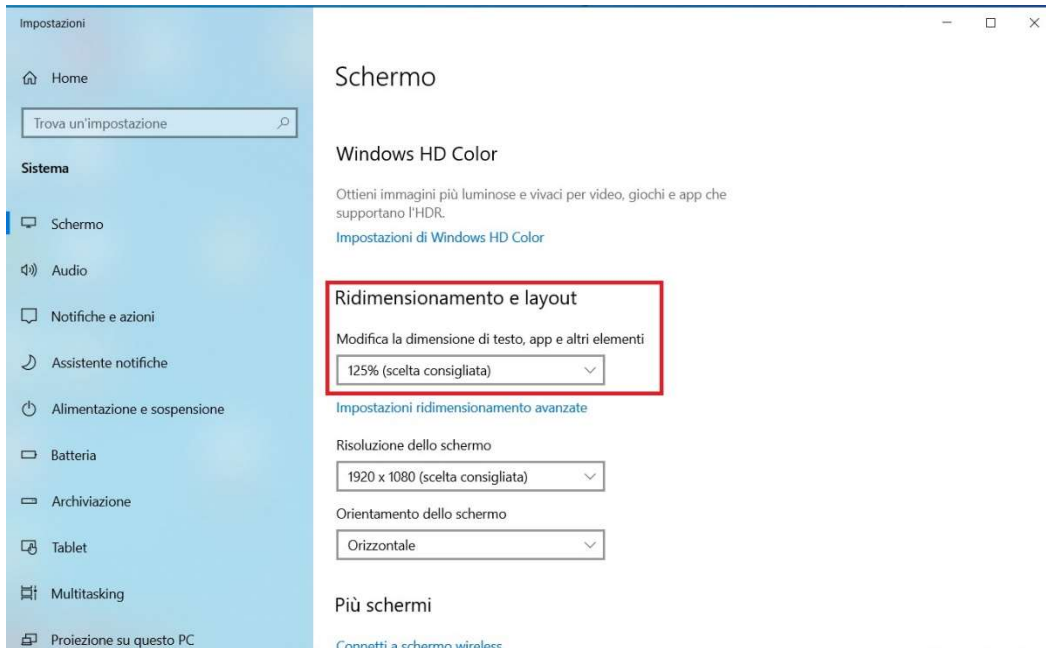
First of all double-check that the high DPI compatibility options have been correctly set (steps **5 to 7** at the start of this guide). If those settings are correct and yet the software has graphic issues, proceed as follows.

- a. Right-click on the desktop and select **“Display settings”** from the context menu.

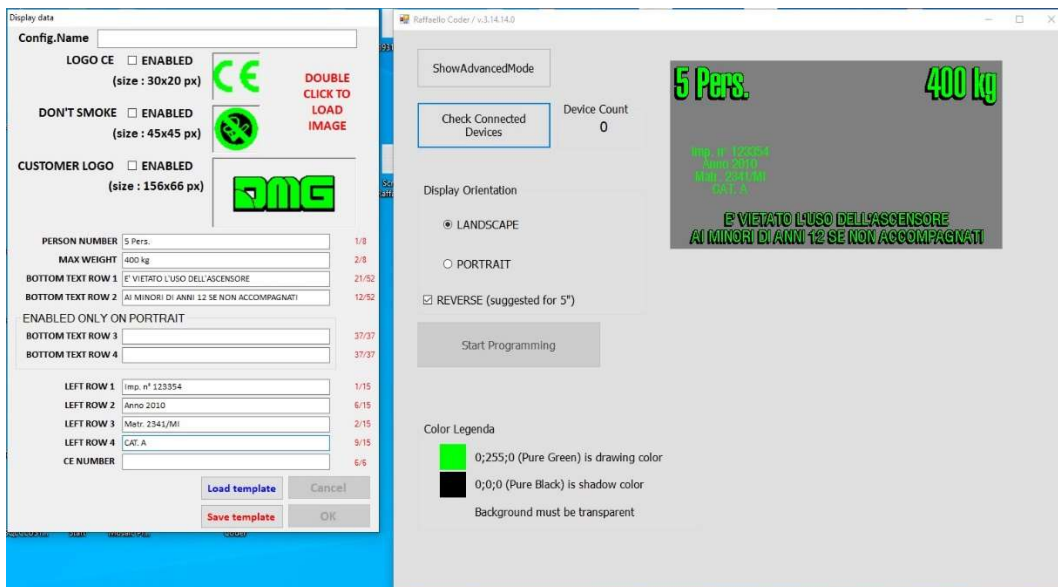




- b. In the Settings window, change the option “**Change the size of text, apps and other items**” and choose “100%” from the drop-down menu. Then close the settings window.



- c. Now all text and icons will look smaller because Windows is using the monitor’s native resolution without any magnifying. This is normal and you need to keep this screen setting while using Raffaello Coder.
- d. Launch the Raffaello Coder software. You will notice that graphic elements and text are the correct size.



- e. When you no longer need to use Raffaello Coder, you can close it and then follow steps **a** and **b** once more to set the magnify % back to the default value (it appears as “Recommended” in the drop-down menu)

You will need to follow these steps (**a** to **e**) every time you want to use the Raffaello Coder software.