



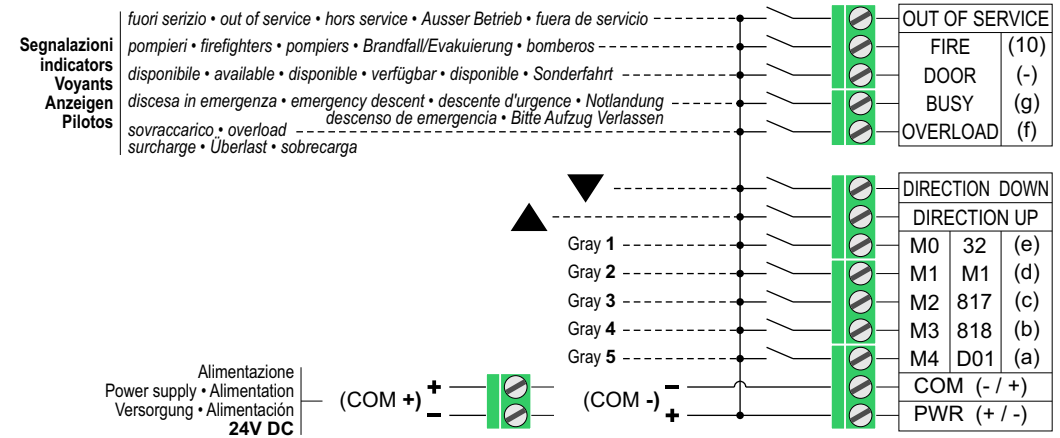
DMG SpA
Via Quarto Negrone, 10
00040 CECCHINA (ROMA) • ITALIA
Tel. +39 06930251 • Fax +39 0693025240
info@dmg.it • www.dmg.it



DX3
Display
DX6

*Manuale di Installazione • Installation manual
Notice technique • Installationshandbuch • Manual de Instalación*

Codice Gray • Gray Code • Código Gray



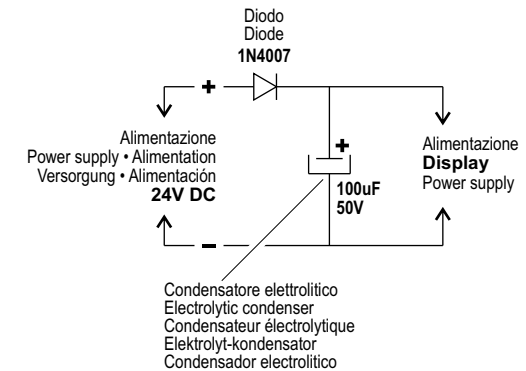
In caso di alimentazione 24V rettificata (non filtrata) si consiglia l'uso di un condensatore esterno.

If an external 24V unfiltered rectified power supply is used, the usage of an external condenser is suggested.

Si l'alimentation est 24V redressée (non filtrée) nous vous conseillons d'ajouter un condensateur externe.

In Falle von ungefilterte 24V Spannung, empfehlen wir die Verwendung eines externen Kondensators.

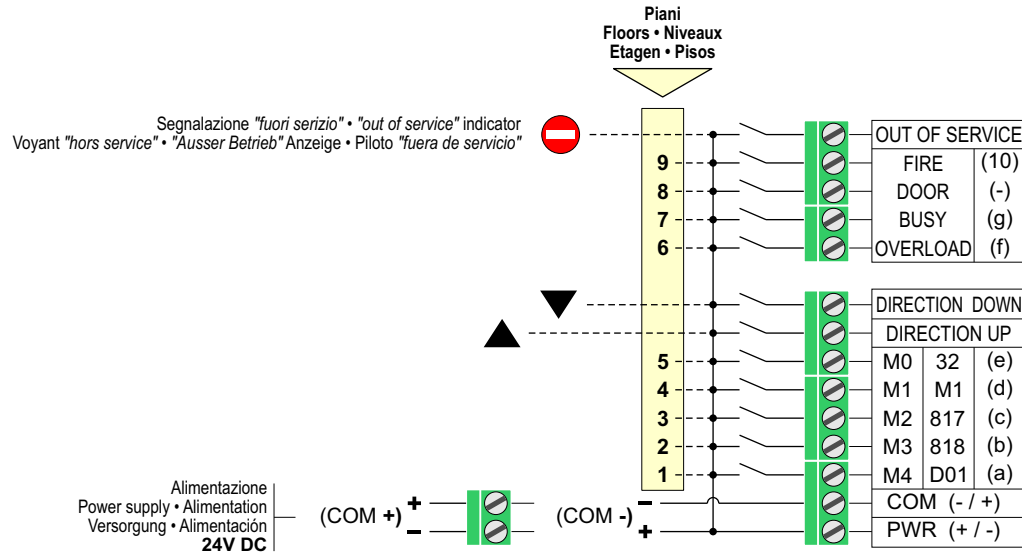
En caso de alimentación 24V corregido (sin filtrar) se recomienda el uso de un condensador externo.



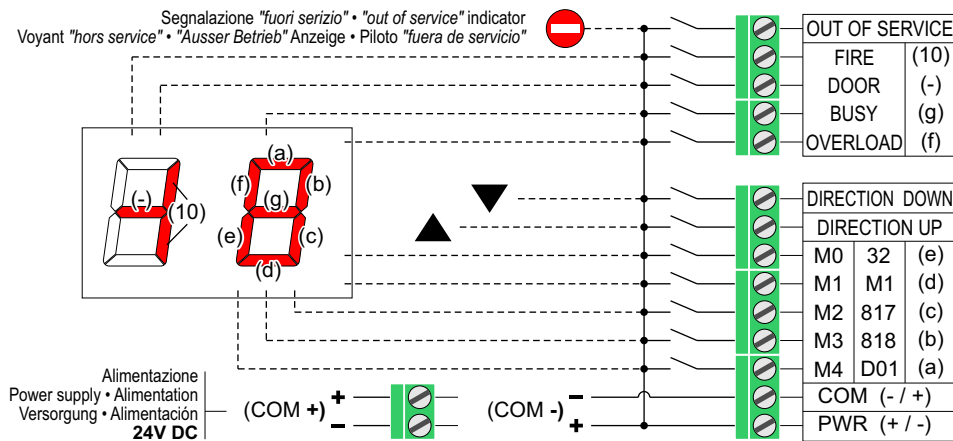
Input	Programmazione personalizzata / Custom programming
OUT OF SERVICE	
FIRE	
DOOR	
BUSY	
OVERLOAD	
M0	
M1	
M2	
M3	
M4	

COLLEGAMENTI CONNECTIONS • BRANCHEMENTS • ANSCHLÜSSE • CONEXIONES

1 filo/piano • 1 line/floor
1 fil/niveau • 1 Ader/Etage • 1 hilo/piso



1 filo/segmento • 1 line/segment
1 fil/segment • 1 Ader/segment • 1 hilo/segmento



INDICE - INDEX
INDEX - INHALT - ÍNDICE

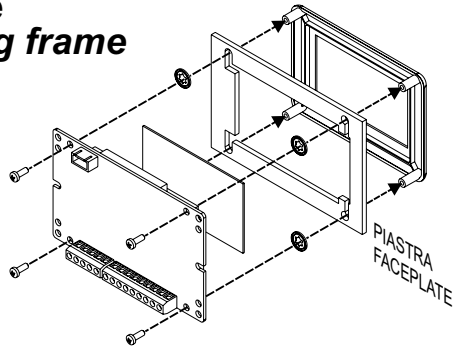
MONTAGGIO pg. 4
MOUNTING
MONTAGE
MONTAJE

COLLEGAMENTI pg. 6
CONNECTIONS
BRANCHEMENTS
ANSCHLÜSSE
CONEXIONES

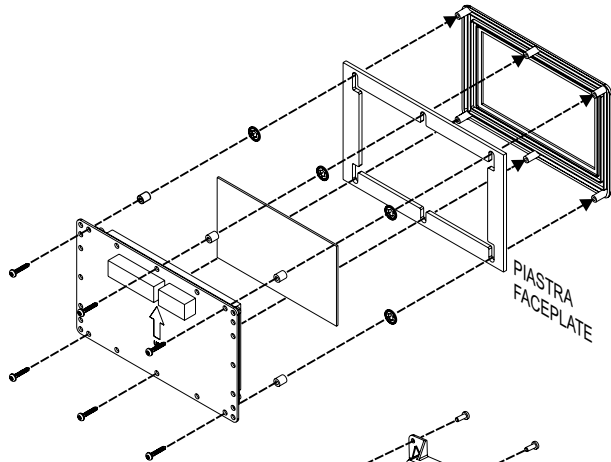
MONTAGGIO

MOUNTING • MONTAGE • MONTAJE

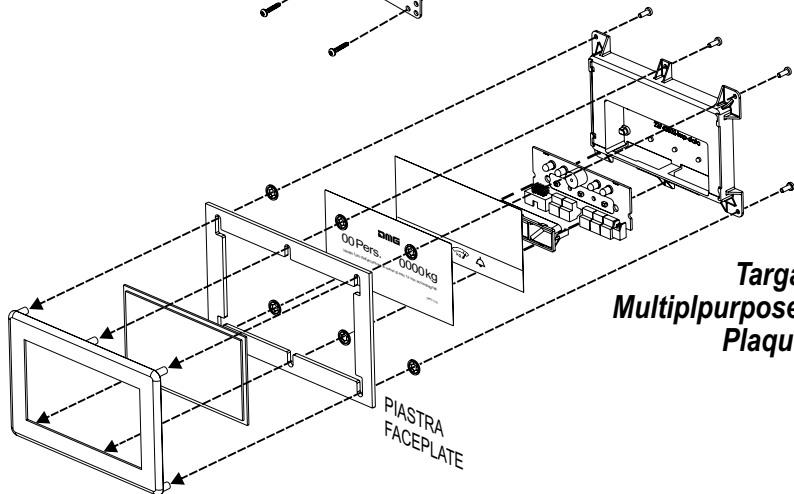
Montaggio con cornice Mounting with adapting frame



- DX3 -

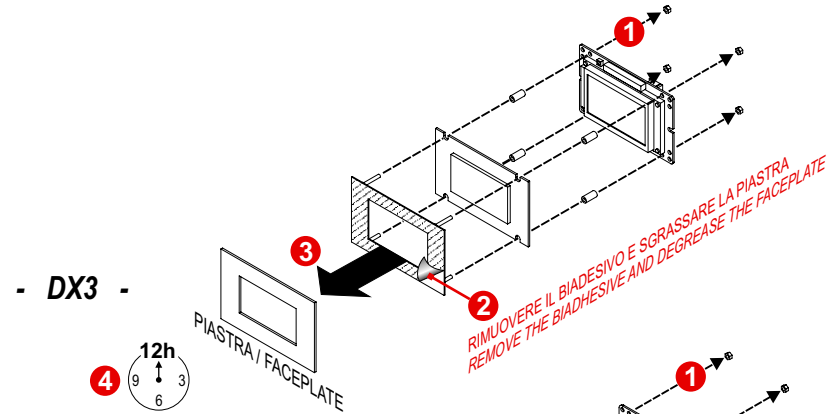


- DX6 -

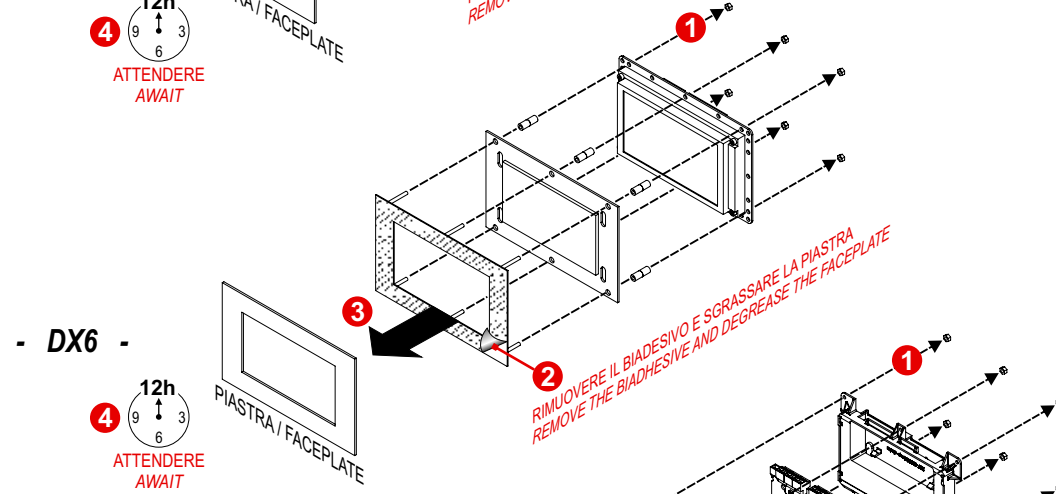


Targa multifunzione
Multipurpose capacity plate
Plaque multifonction

Montaggio a filo piastra / Flush mounting



- DX3 -



- DX6 -

Targa multifunzione
Multipurpose capacity plate
Plaque multifonction

