

# Water resistant control panel

Water resistant control panel in St/steel 320 GRIT (3 mm thickness).

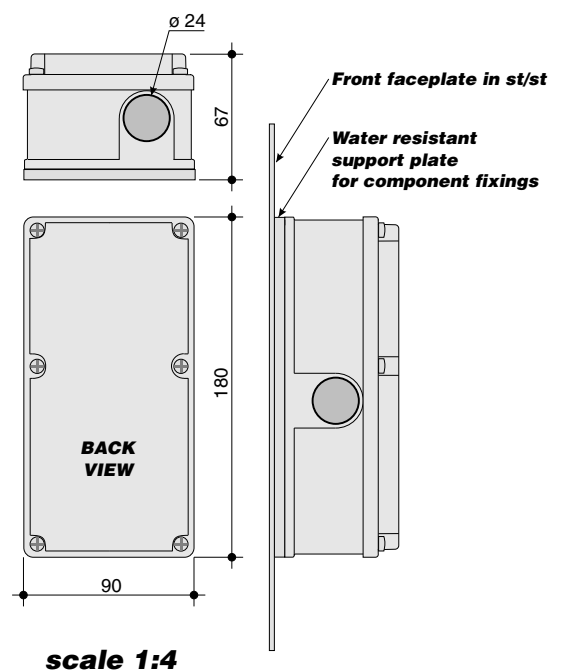
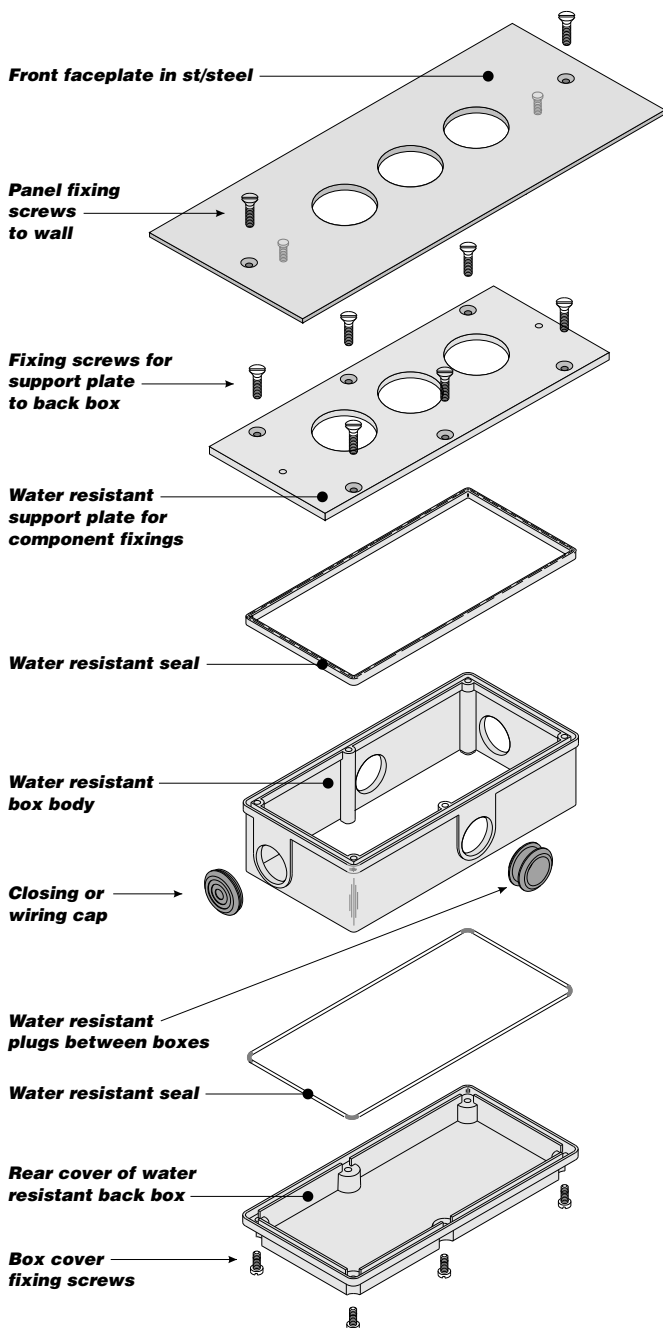
Protection degree **IP 65**:  
protected against direct water jet penetration  
and totally protected against dust penetration

Push-buttons protected by a flexible PVC cap.  
Other components isolated by silicone.

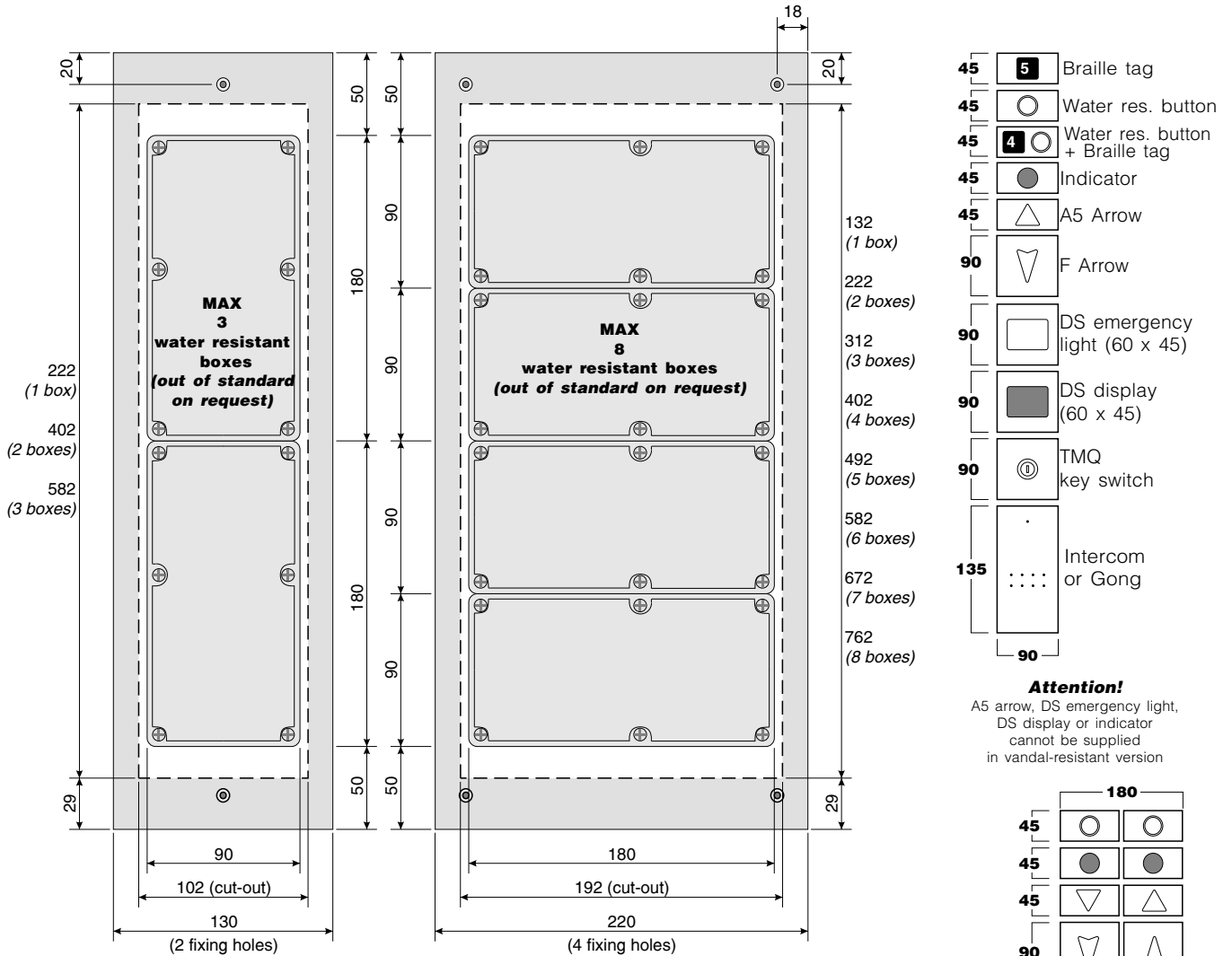
Unbreakable polycarbonate body, isolated by flexible PVC water resistant seal.

TECHNICAL FEATURES	SHELL
Width	130 and 220 mm
Depth	67 mm
Length (series 130)	280, 460, 640 mm
(series 220)	370, 460, 550, 640, 730, 820 mm

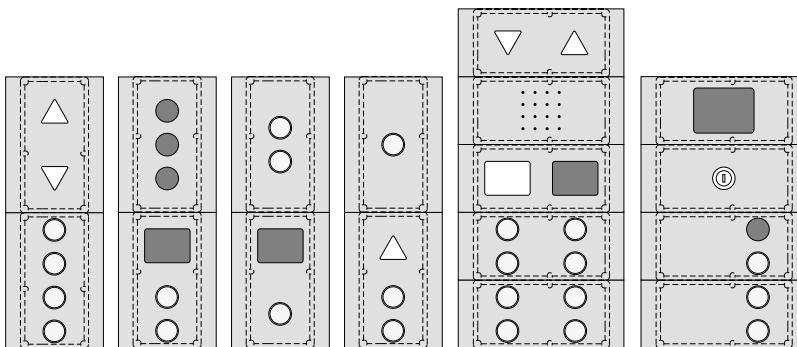
out of standard lengths on request



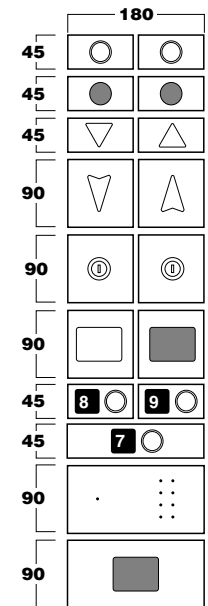
# Water resistant control panel



**Attention!**  
Only standard faceplate cuts available.  
Plate size depends on back box size.



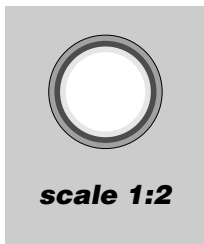
**Attention!**  
On faceplate 220 mm wide, push-buttons and indicators placed on a single line cannot be centre aligned (except TMQ key switch).



CODES CONTROL PANEL	AVAILABLE STANDARD DIMENSIONS AND CODES								
	130 x 280	220 x 370	130 x 460	220 x 460	220 x 550	130 x 640	220 x 640	220 x 730	220 x 820
st/steel 320 GRIT 3 mm	PSW13328	PSW22337	PSW13346	PSW22346	PSW22355	PSW13364	PSW22364	PSW22373	PSW22382
CUT-OUT dimension	102 x 222	192 x 312	102 x 402	192 x 402	192 x 492	102 x 582	192 x 582	192 x 672	192 x 762

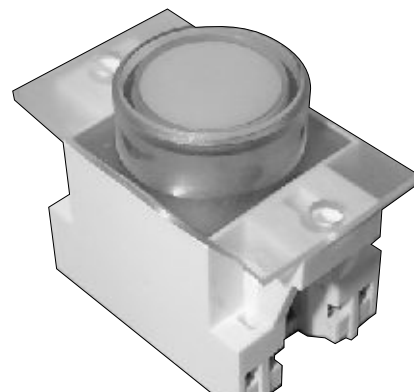
# FACEPLATES

## water resistant push-button



Mounting projecting 3 mm over plate surface. Bezel in polycarbonate. Light-diffusing push-button in polycarbonate coated with hot print film and protected by two caps: internally in transparent polycarbonate and externally in flexible PVC.

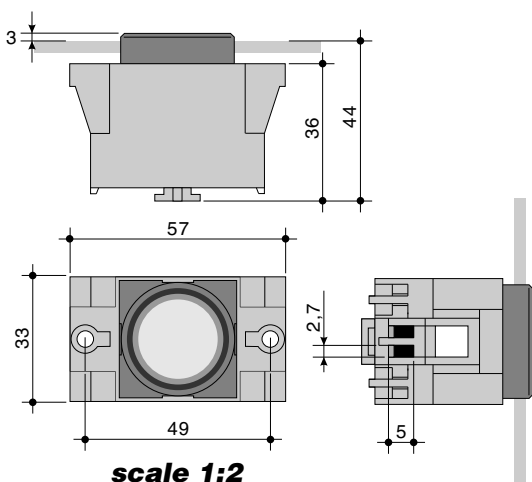
Protection degree **IP65**:  
protected against direct water jet penetration and totally protected against dust penetration



### TECHNICAL FEATURES

### WATER RESISTANT PUSH-BUTTON

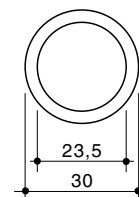
<b>Structure</b>	in polycarbonate
<b>Mounting</b>	3 mm projecting over faceplate surface
<b>Fixing</b>	by metric screws
<b>Push-button stroke</b>	mechanical 3 mm
<b>Wiring</b>	wires screwed on terminals; suggested wire sections: 0,5 ÷ 1,5 mm <sup>2</sup>



### COLOURS

SW  
LAMP

BEZEL transparent	smoke	●
	white	●
PUSH-BUTTON	yellow	●
	red	●
		🔔
		STOP



### CODES

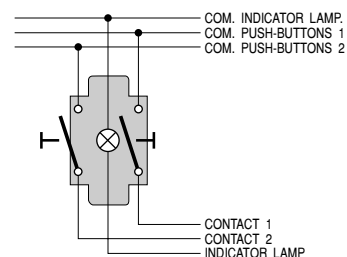
COMPLETE PUSH-BUTTON AC/DC

### MECHANICAL

	<b>NON ILLUMINATED push-button</b>	B3SW300	B3SW400	B3SW500
	1,2W • 12V	B3SW3T2	B3SW4T2	B3SW5T2
	1,2W • 24V	B3SW3T4	B3SW4T4	B3SW5T4
	<b>PUSH-BUTTON STROKE</b>	3 mm		
	<b>LIFE AT 220V-1A</b>	1.500.000 OPERATIONS		
	<b>LAMP LIFE</b>	6.000 h		

Note : For engraved push-button add "D" at the end of the code

- (min. 50 pcs.) R3DB20 **Spacer 2 mm**
- (min. 50 pcs.) R3DB30 **Spacer 3 mm**
- (min. 20 pcs.) R30SW
- (min. 20 pcs.) R31SW
- (min. 20 pcs.) R32SW
- (min. 20 pcs.) R33SW (engraving available on request, not included in price)
- (min. 20 pcs.) R34 (specify if red or white)
- (min. 20 pcs.) **TELEPHONE lamp** R33T49 R34T49 R35T49
- (min. 100 pcs.) **12V:** RLT121  
**24V:** RLT241



Note :  
Each push-button  
can have two contacts  
NO or NC