



## RETROFIT Display

### Contents

[Safety and usage cautions](#)

[Mounting](#)

[Wiring](#)

[Serial DMG D67 -> Giotto D6](#)

[Other Controllers D67 -> Giotto D6](#)

[Serial DMG D43 -> Raffaello D4](#)

[Other Controllers D43 -> Raffaello D4](#)

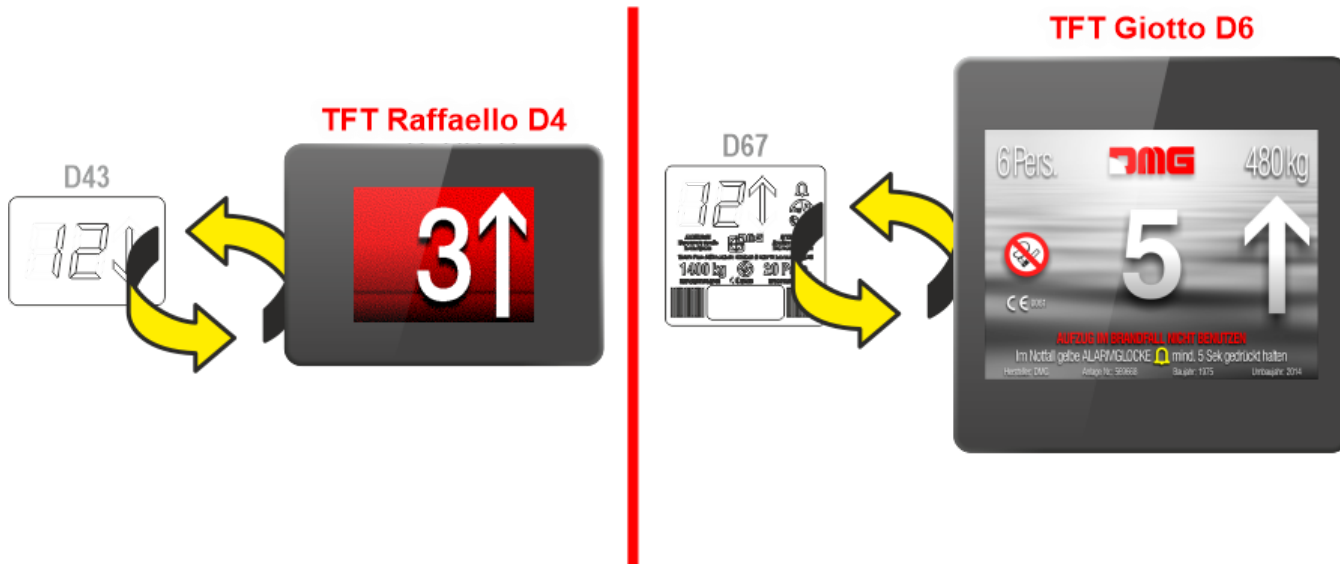
[Settings](#)

[D67 -> Giotto D6](#)

[D43 -> Raffaello D4](#)



(v 1)



[i](#) To check and download all versions of this guide, go at the following link.

## Safety and usage cautions

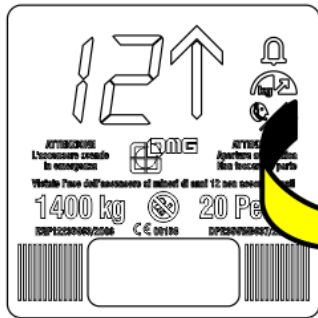
Before installing our products, we recommend you to consult the section about safety and usage cautions at the link below.



# Mounting

➔ D67 -> Giotto D6

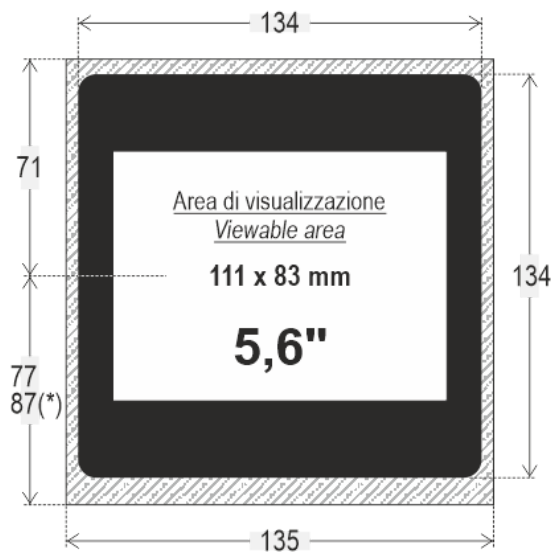
Frontal mounted version for retrofitting, same cut-out of D67 position indicator.



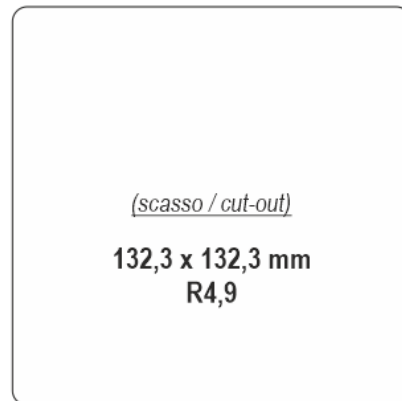
D67 cut-out




134 x 134 mm

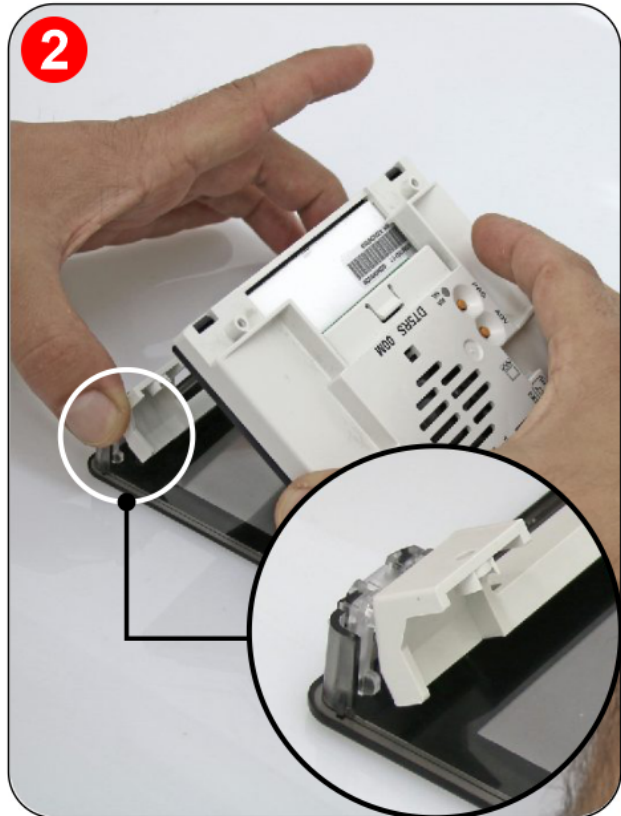
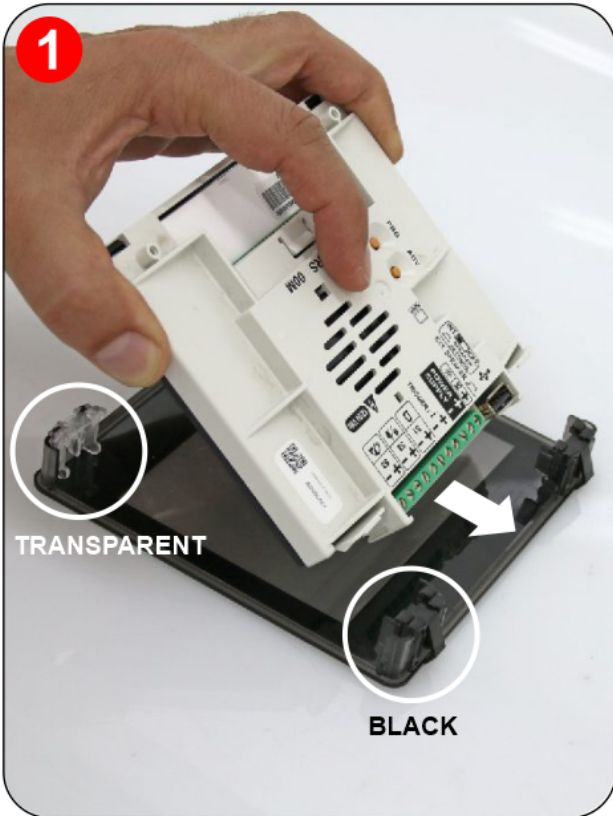
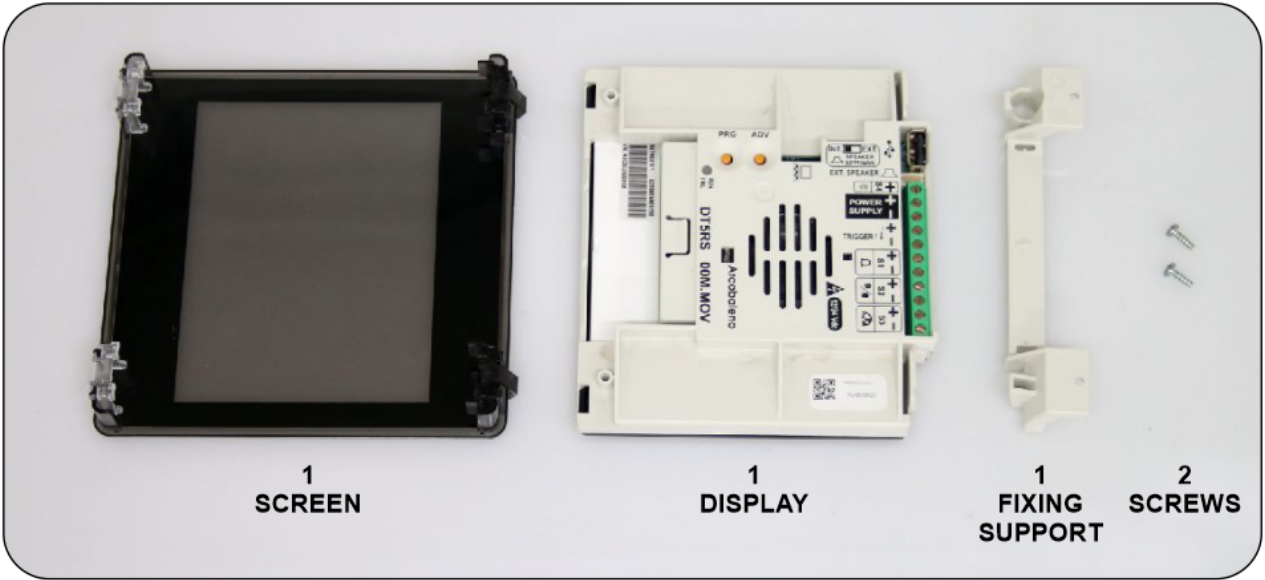


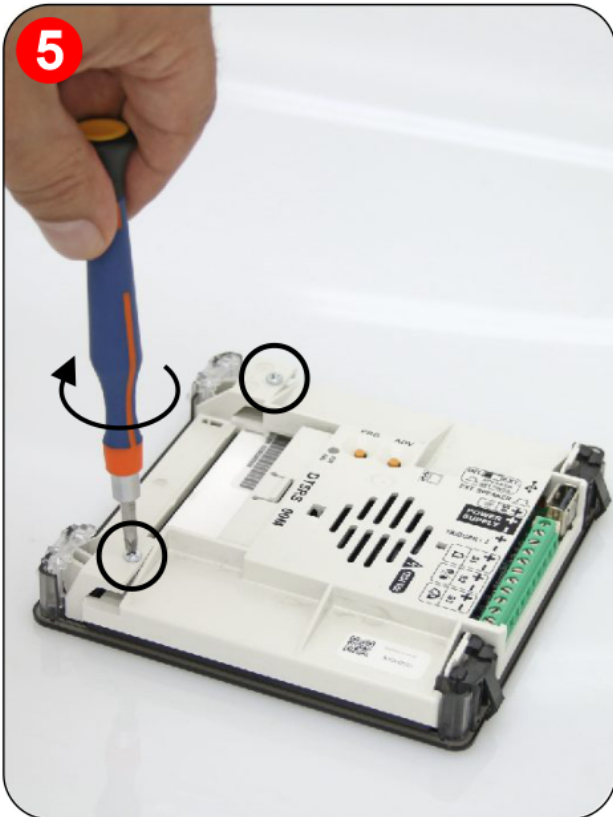
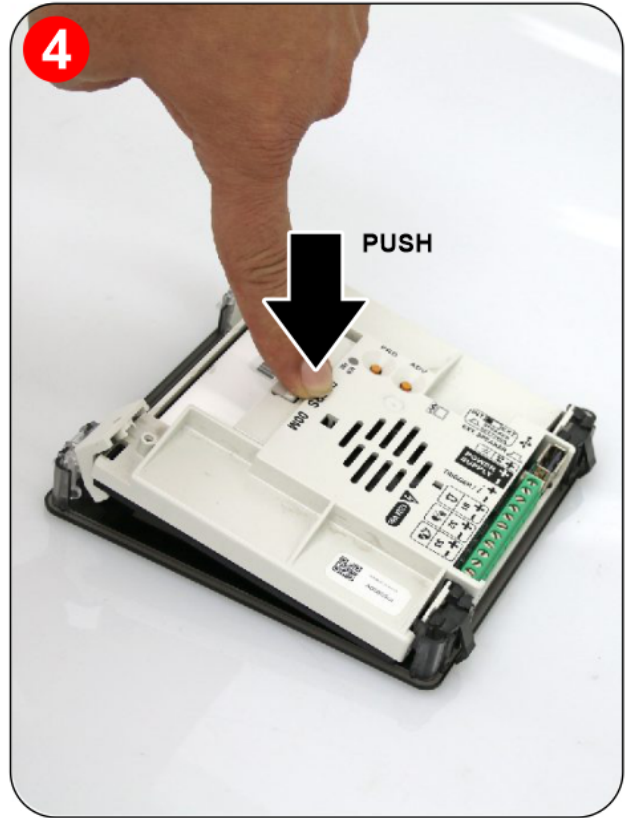
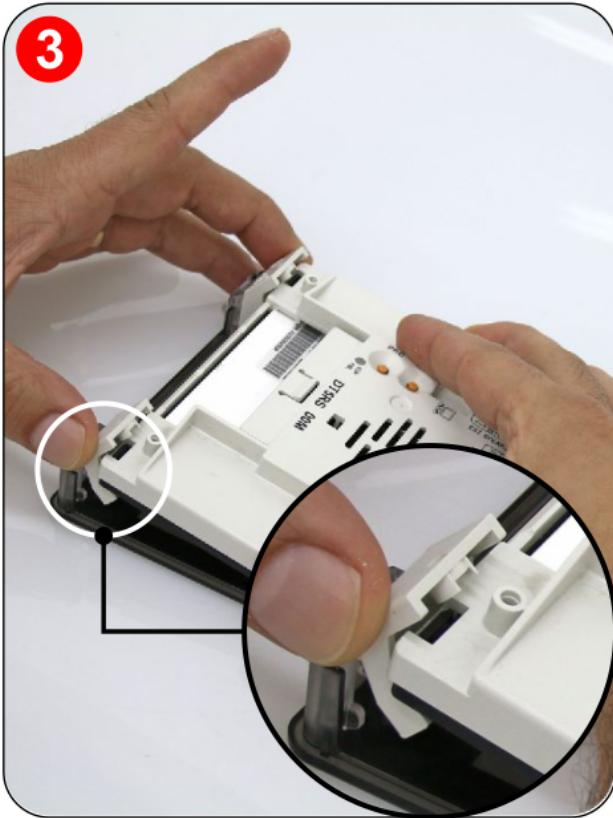
## Giotto D6



(\*) = DT5R6S00M.FG

 Modulo piastra  
Faceplate module / Module boîte  
Plattenmodul / Modulo placa

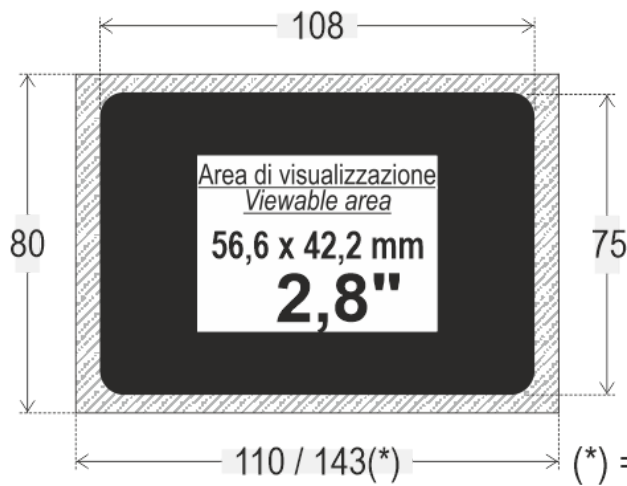
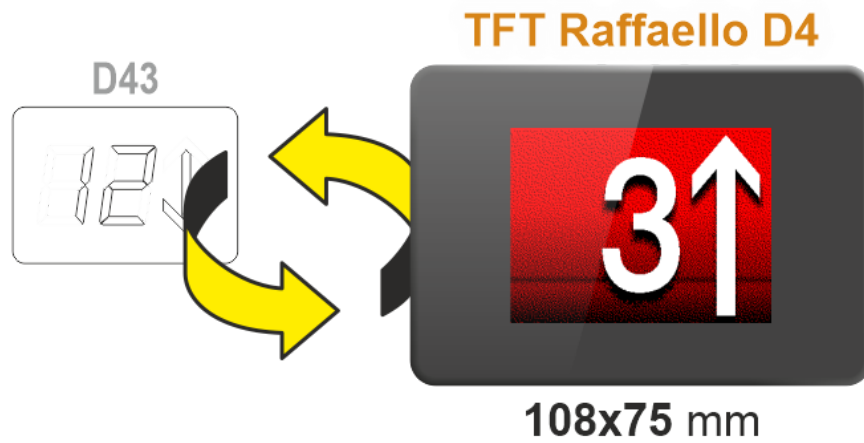




➔ D43 -> Raffaello D4

Frontal mounted version for retrofitting, same cut-out of D43 position indicator.





## Raffaello D4

*(scasso / cut-out)*

**106,8 x 73,7 mm**  
**R5,35**



Modulo piastra  
Faceplate module / Module boite  
Plattenmodul / Modulo placa



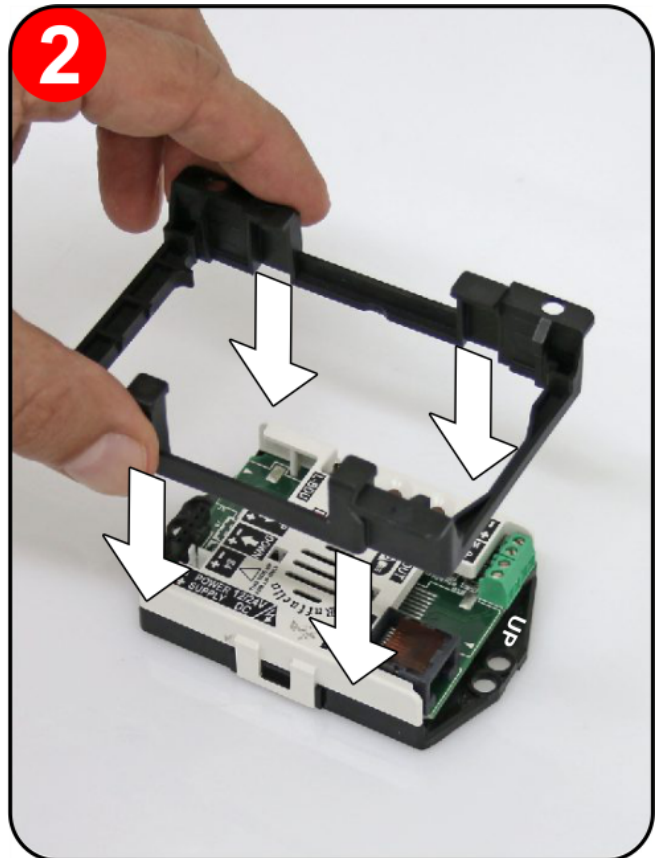
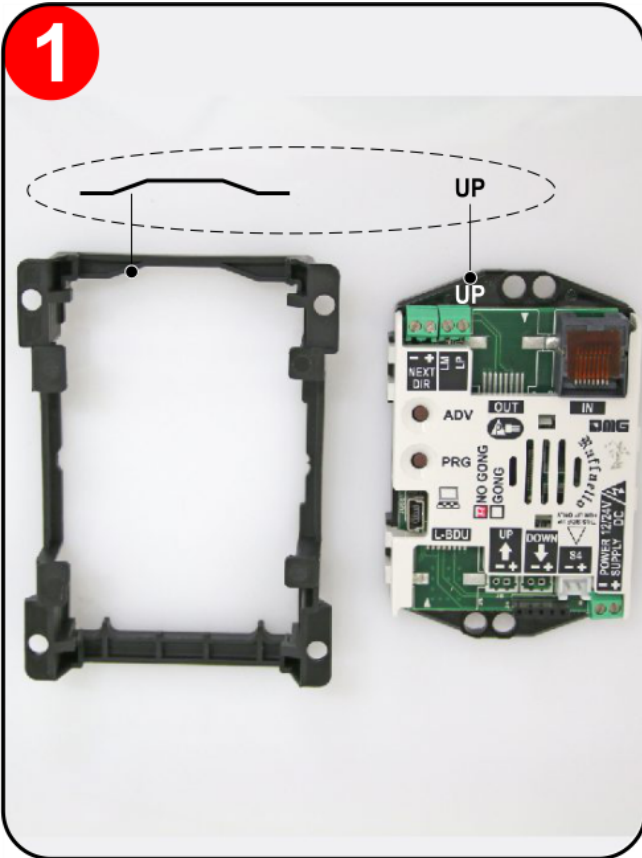
1  
SCREEN

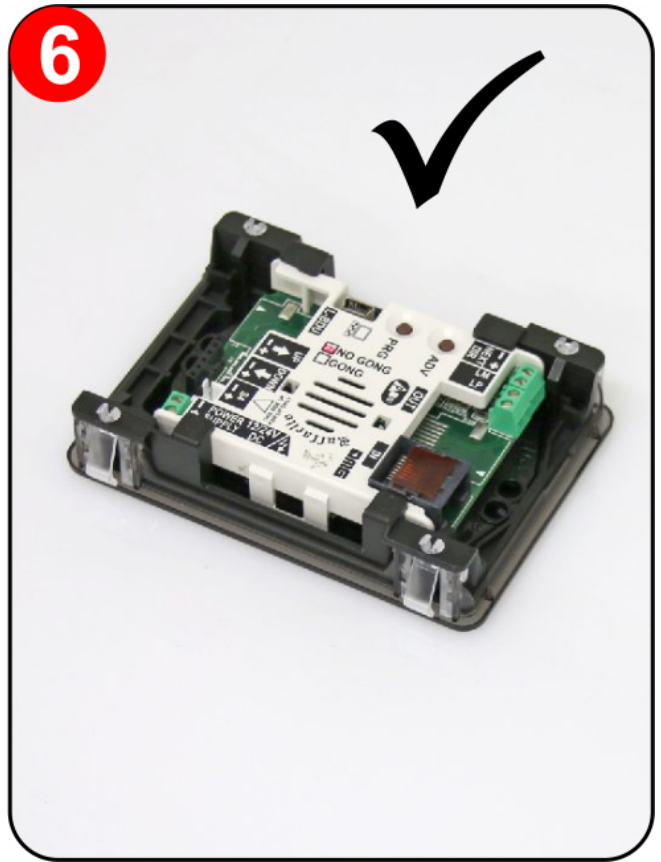
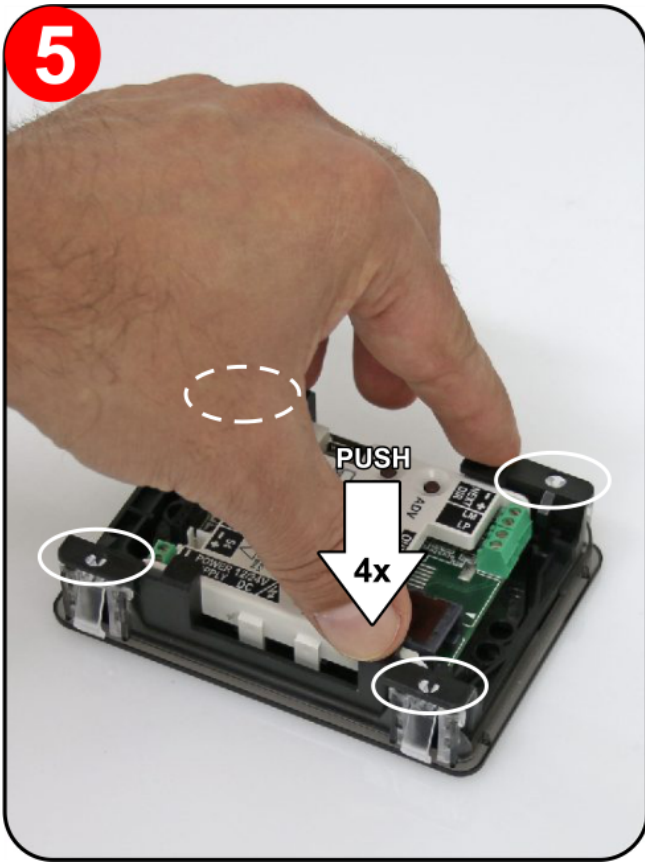
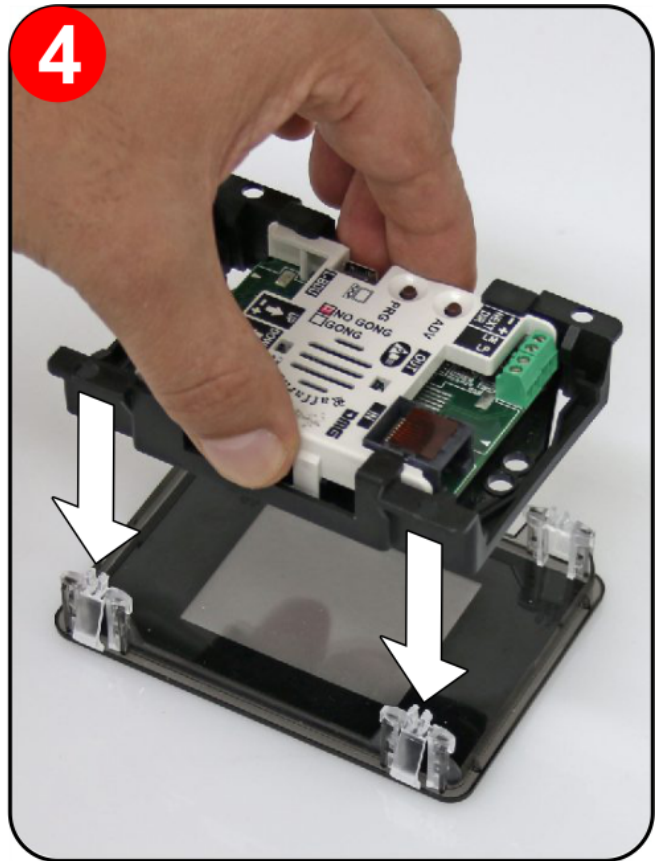
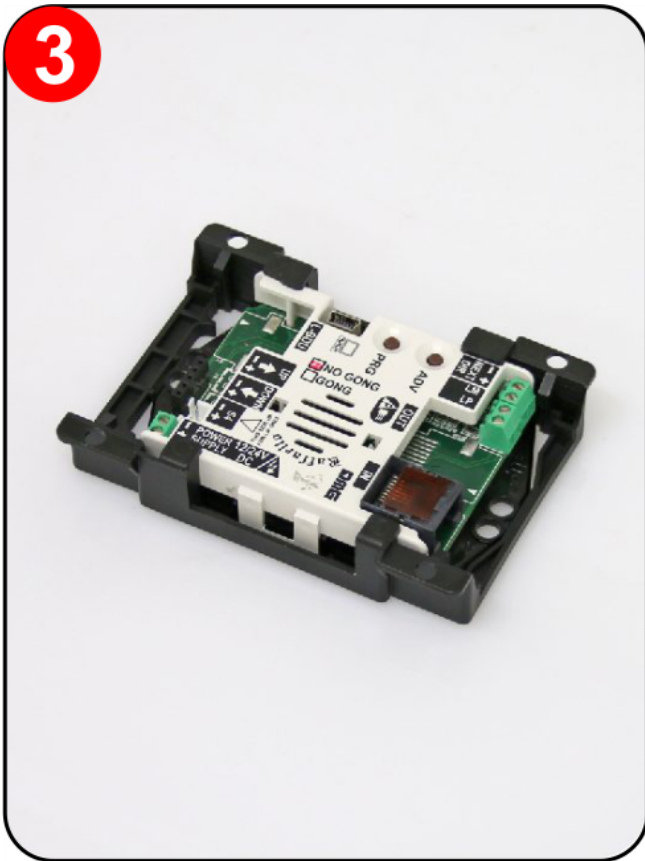


1  
DISPLAY



1  
FIXING  
SUPPORT

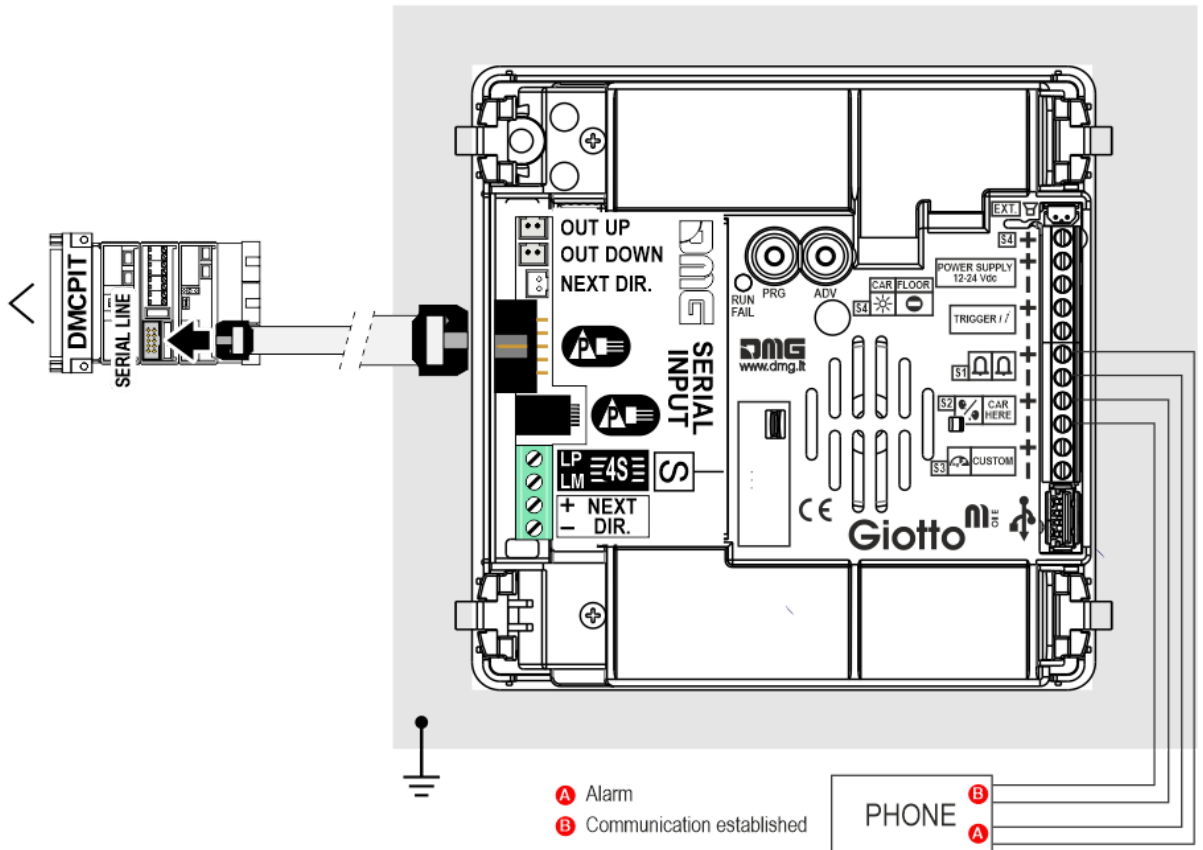
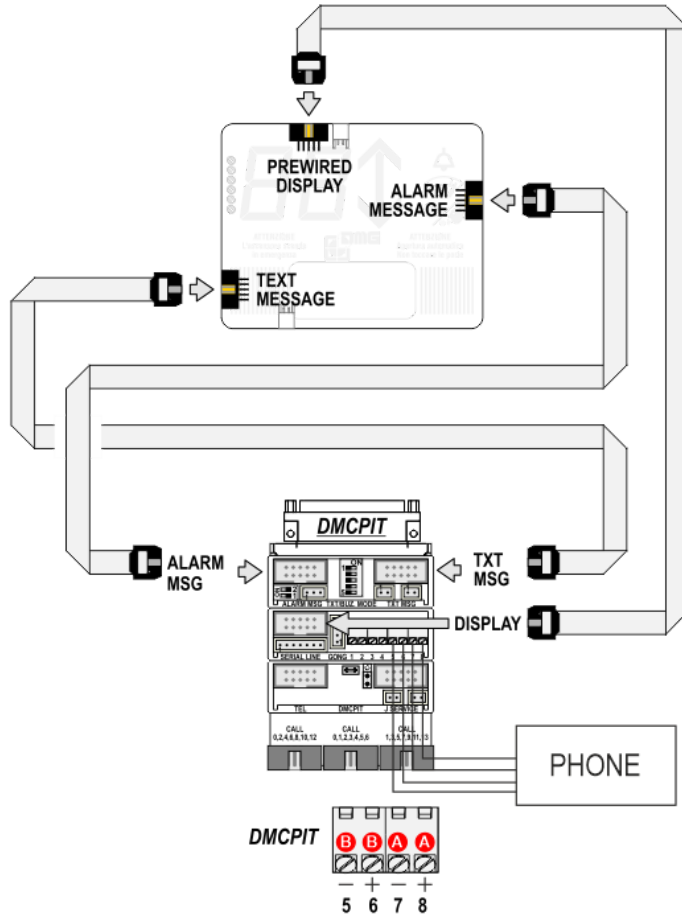




## Wiring

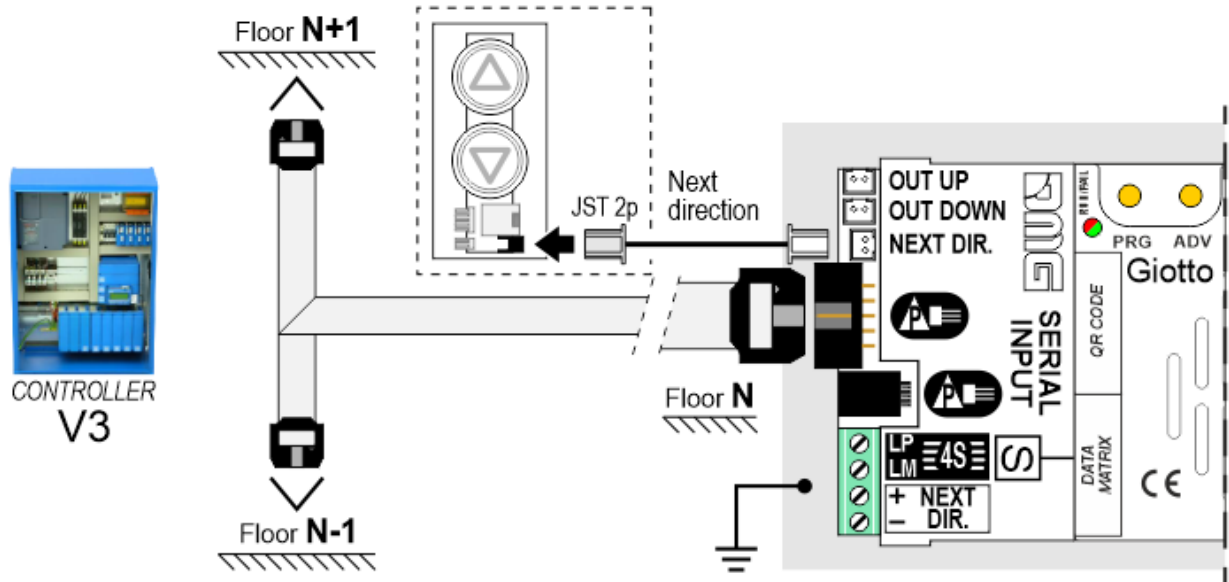
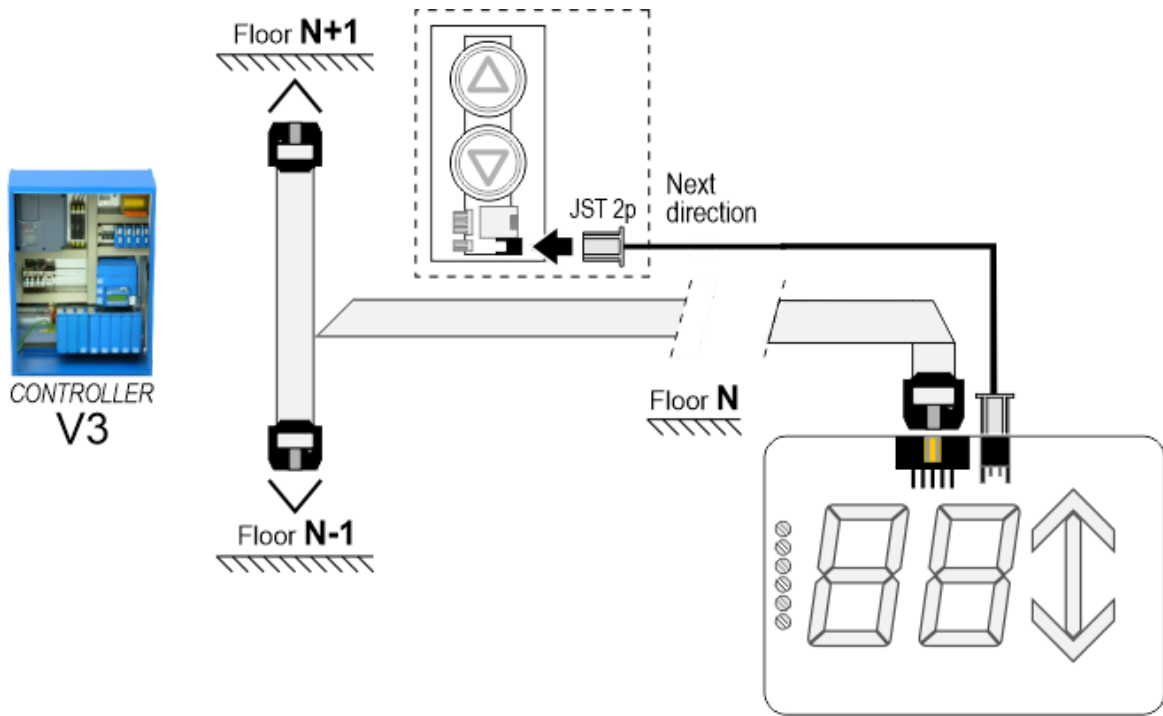
Serial DMG D67 -> Giotto D6







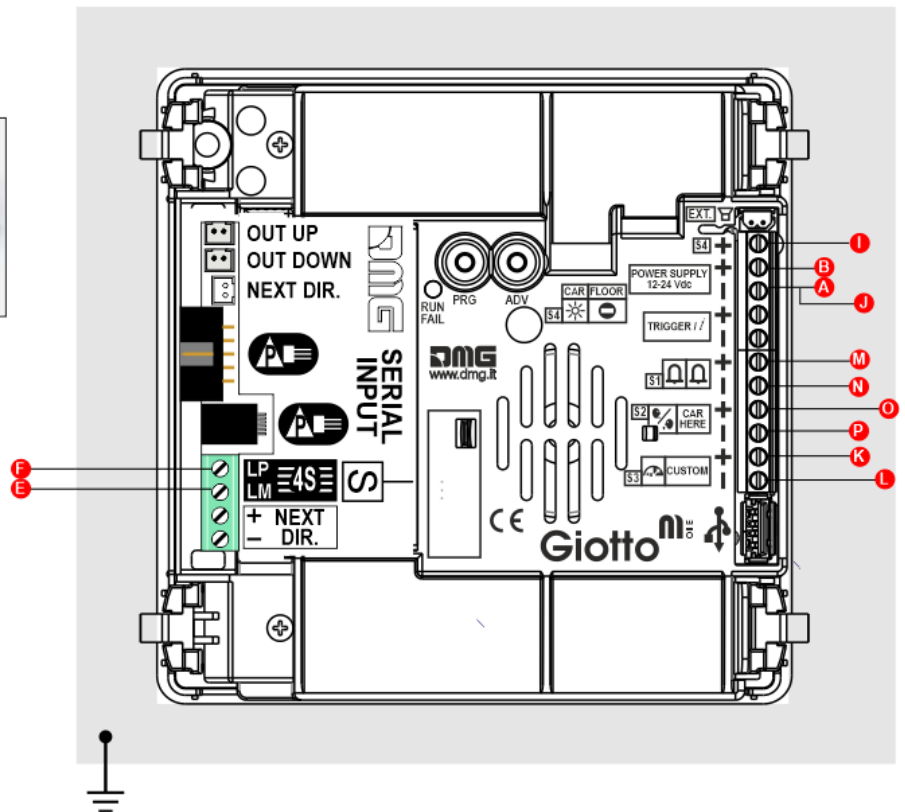
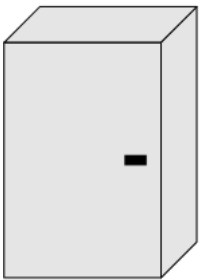
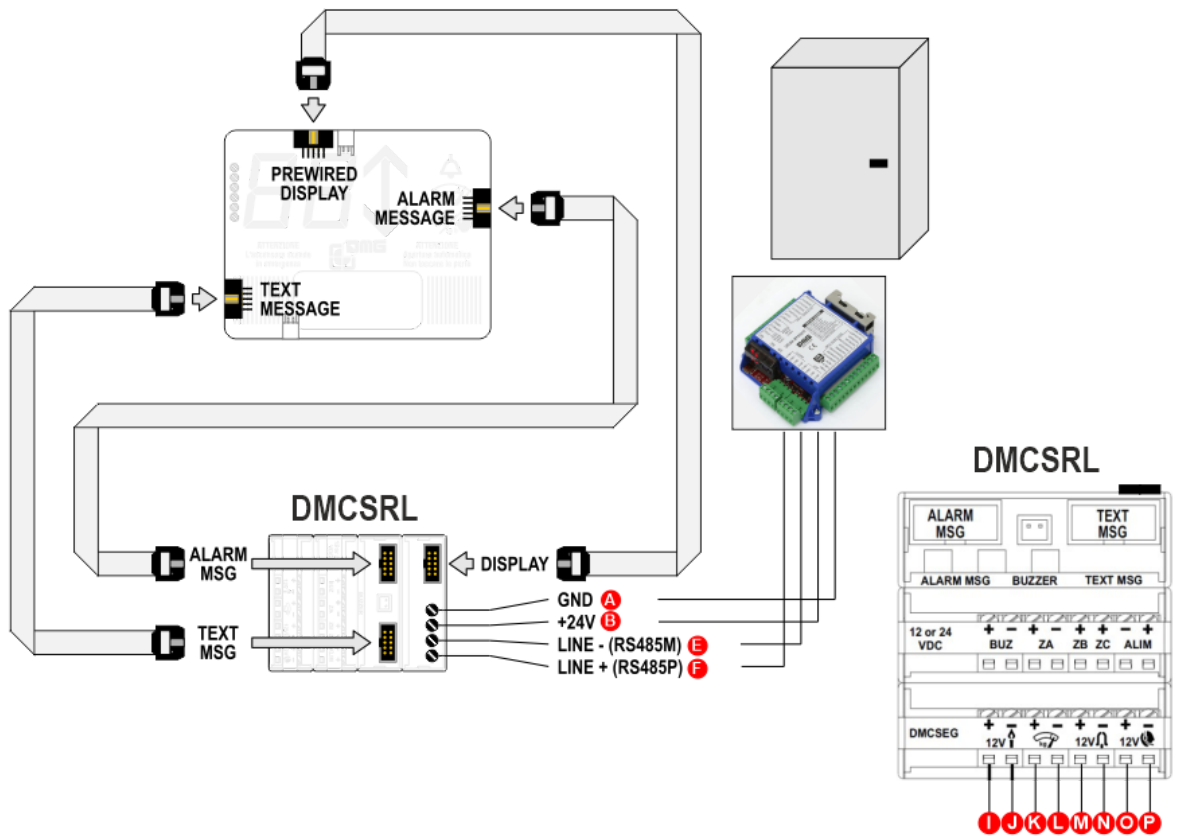
⊖ Floor



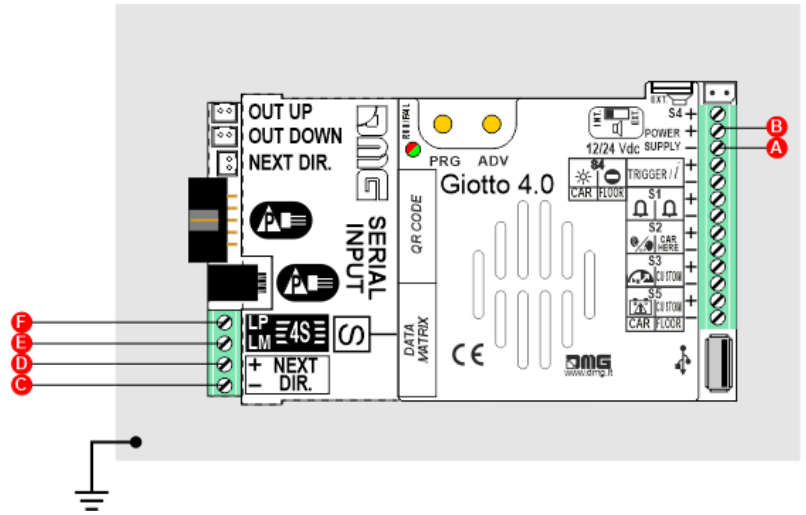
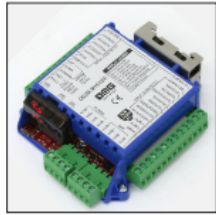
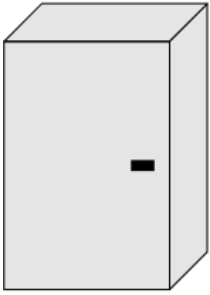
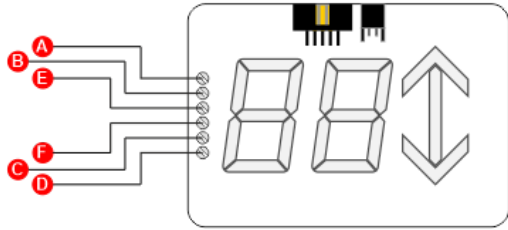
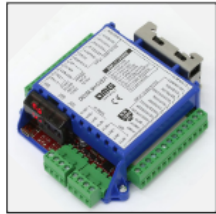
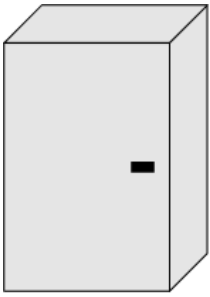
Other Controllers D67 -> Giotto D6

⊖ Encoder DEUM

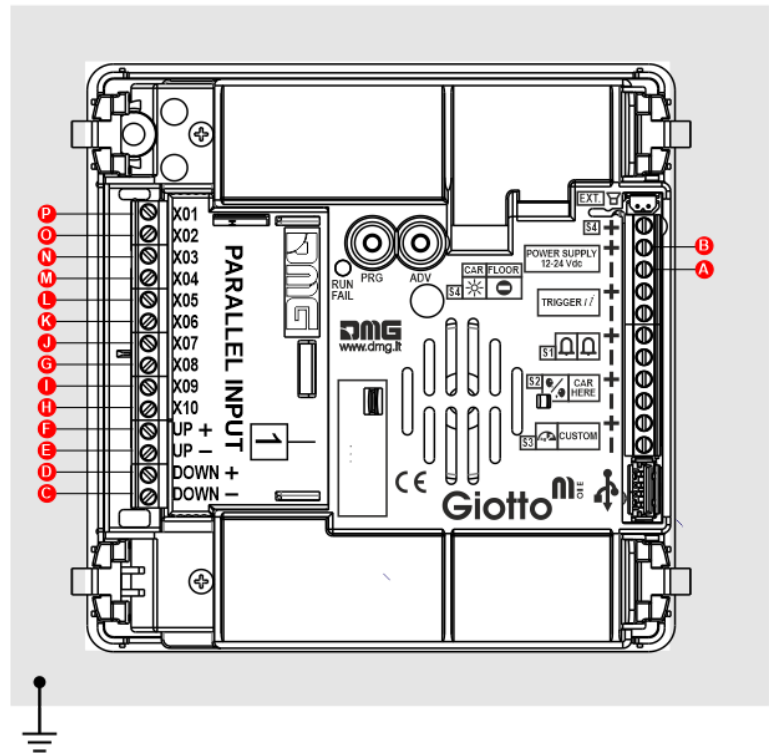
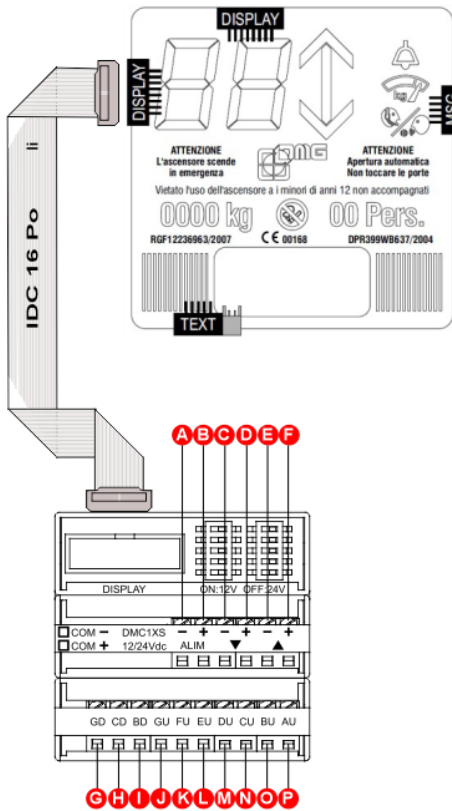
Car



Floor

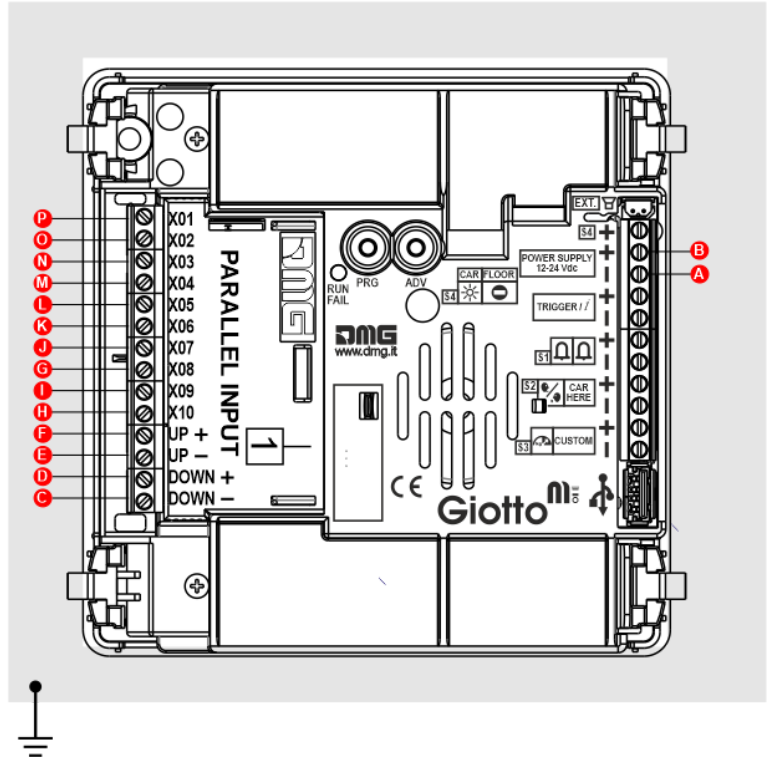
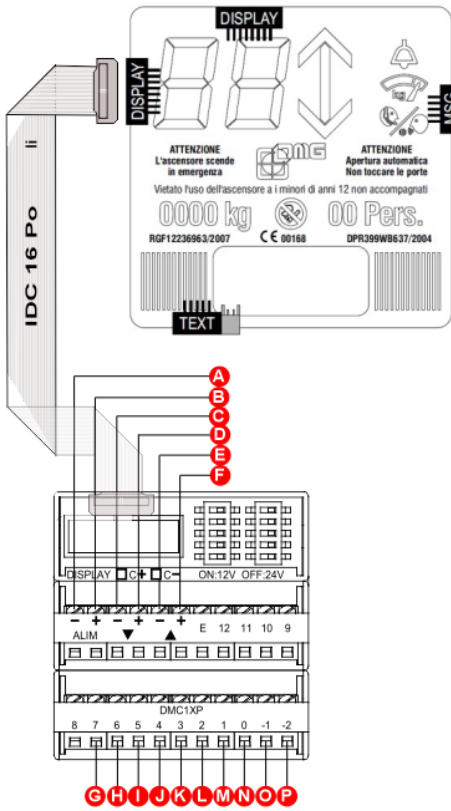


1 Wire / Segment

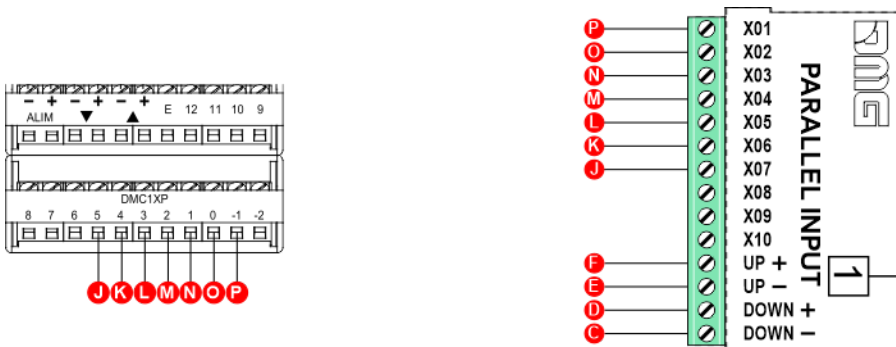


❶ In case of Display + Arrows, cables C – D – E – F will be wired on the arrows. Therefore will not have to be wired to the Display

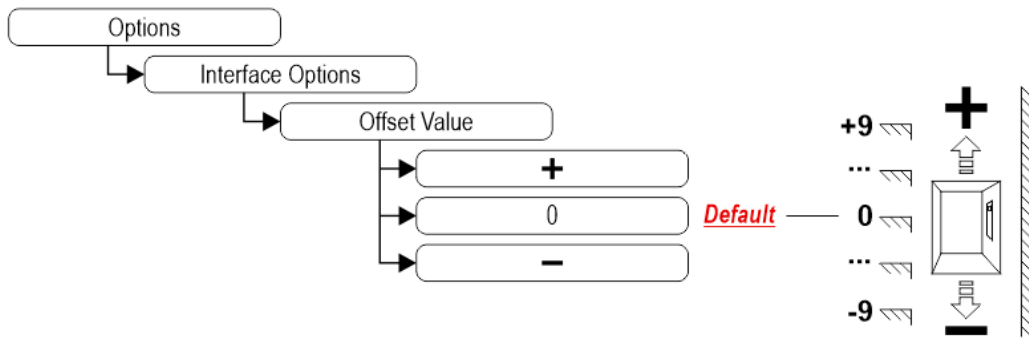
➔ 1 Wire / Floor



**i** The new TFT displays have menu-programmable inputs. Therefore always start connecting the position wires starting from the lowest floor in the X01 input of the TFT display and the others in the following inputs, then adjusting the offset. For example, starting from floor -1, wire as below and set the offset to -1

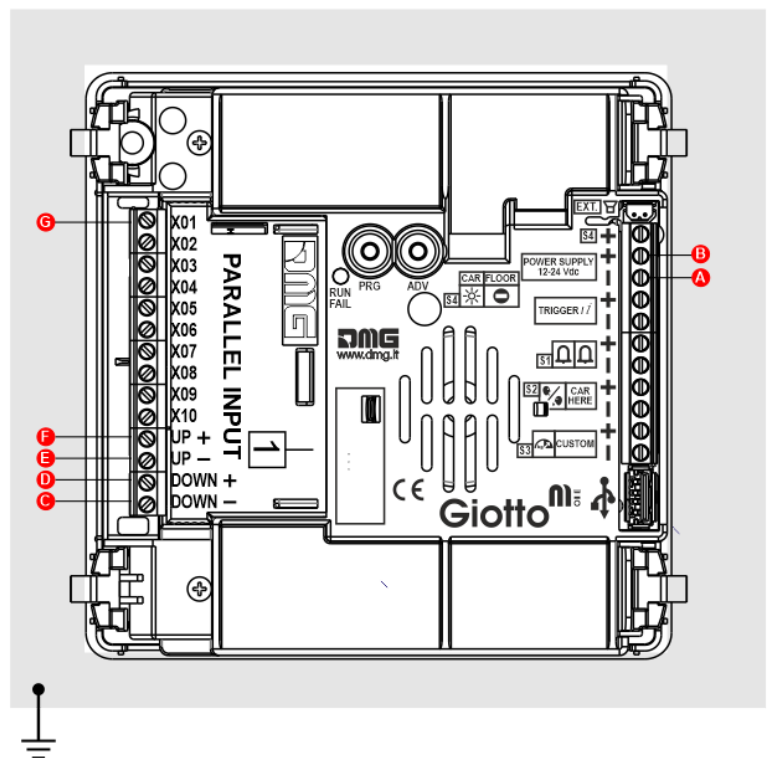
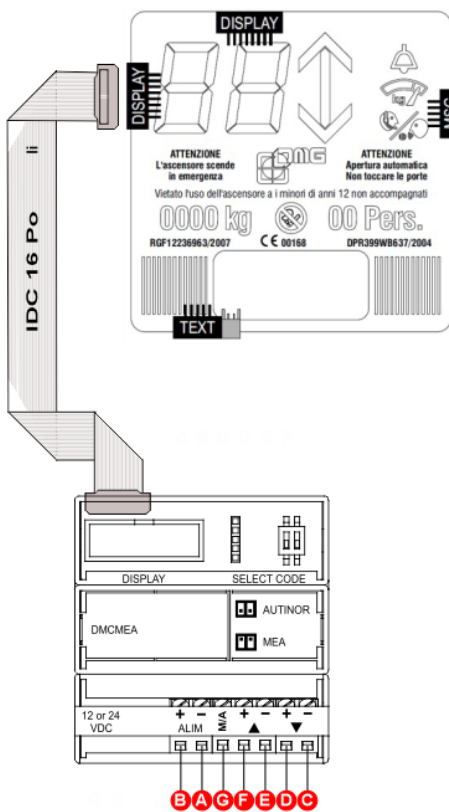






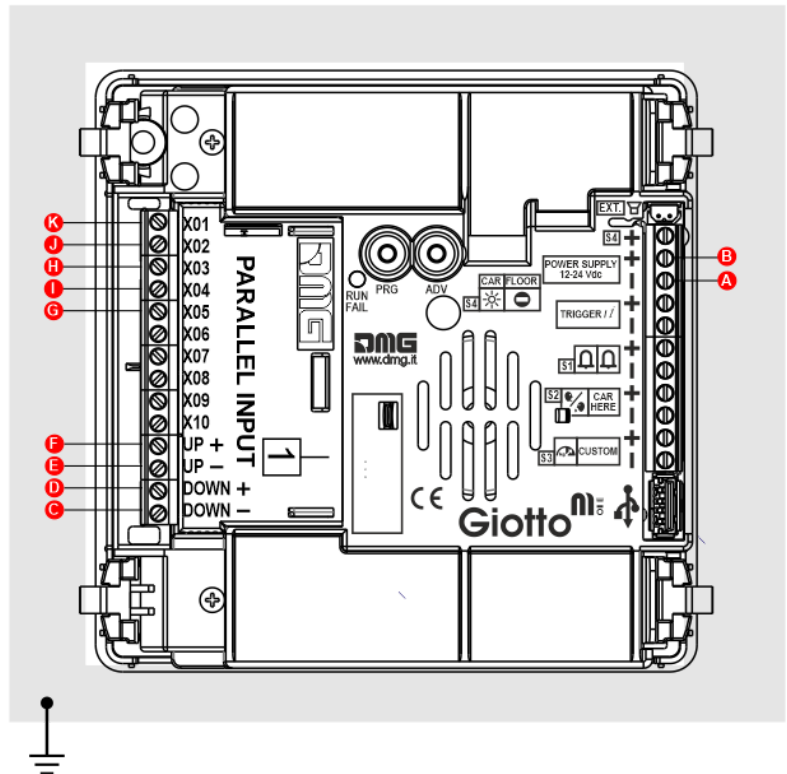
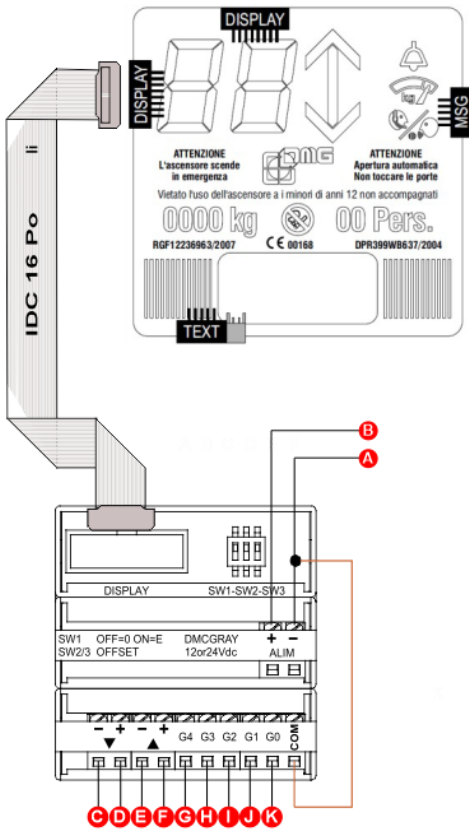
ⓘ In case of Display + Arrows, cables C – D – E – F will be wired on the arrows. Therefore will not have to be wired to the Display

## ME-AUTINOR



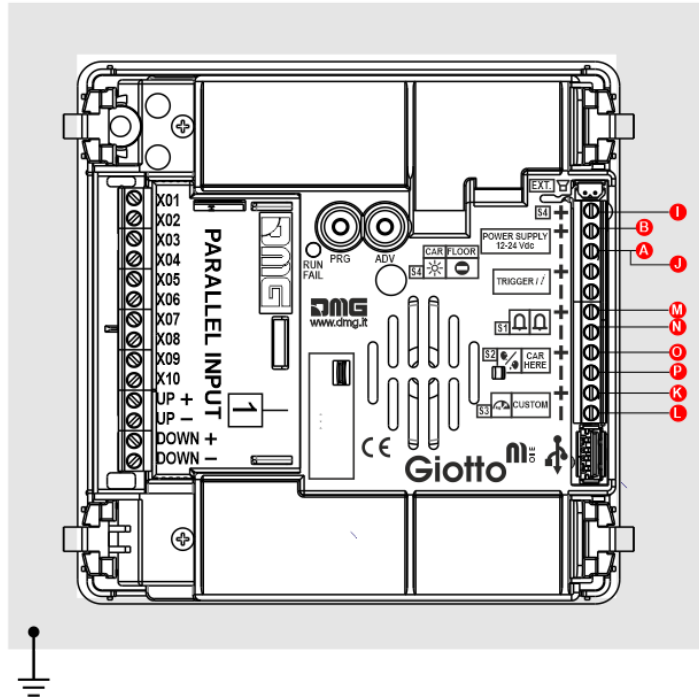
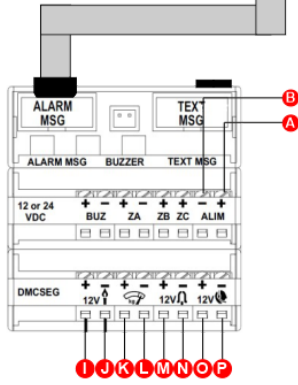
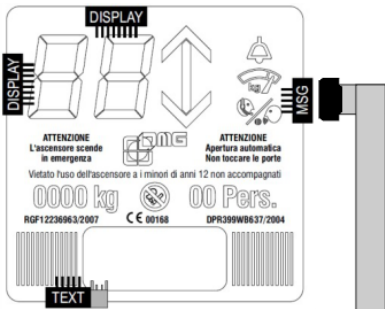
- ⓘ In case of Display + Arrows, cables C – D – E – F will be wired on the arrows. Therefore will not have to be wired to the Display

## GRAY



- ⓘ In case of Display + Arrows, cables C – D – E – F will be wired on the arrows. Therefore will not have to be wired to the Display

## Signalizations

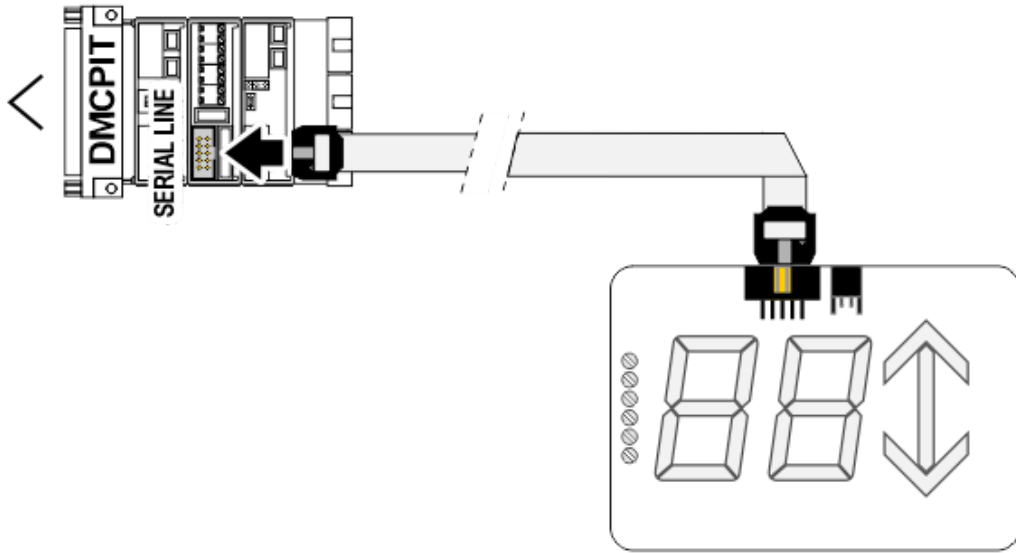


## Serial DMG D43 -> Raffaello D4

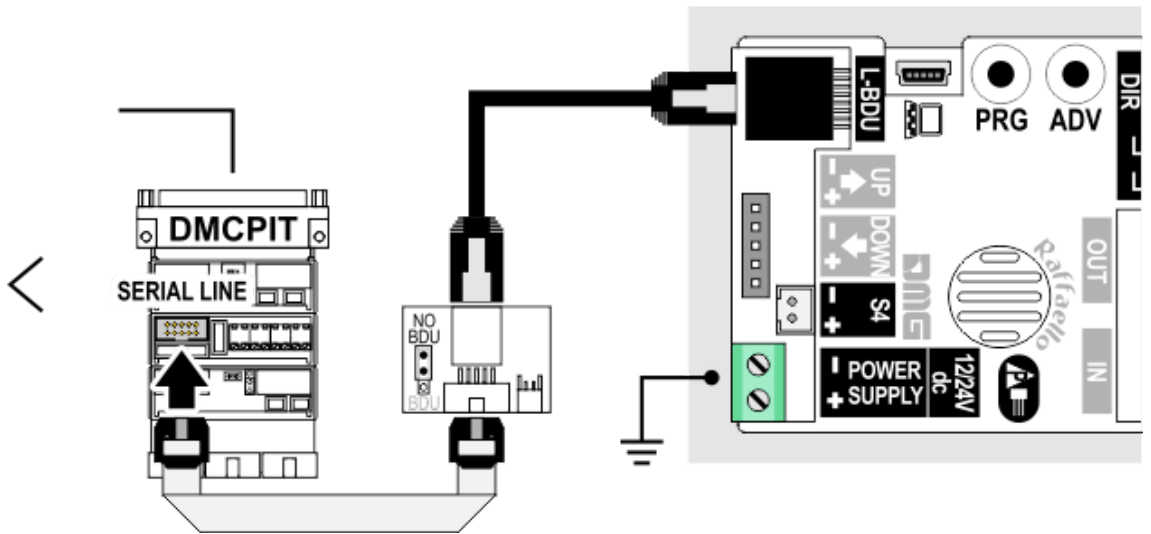
— Car

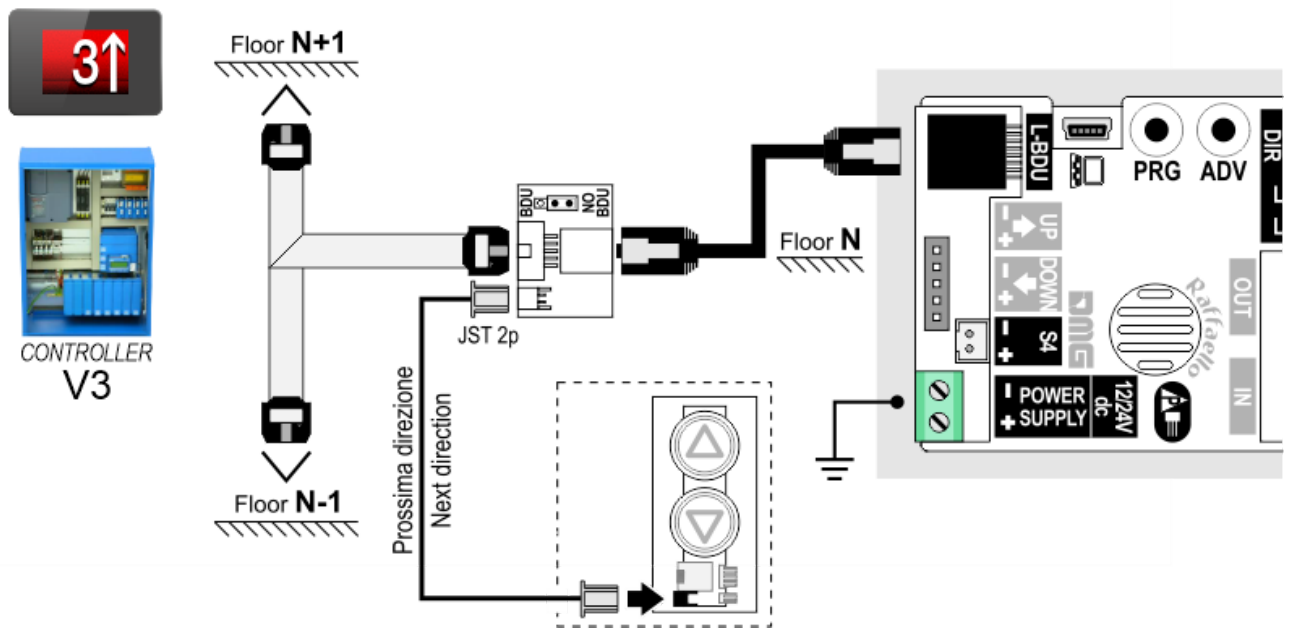
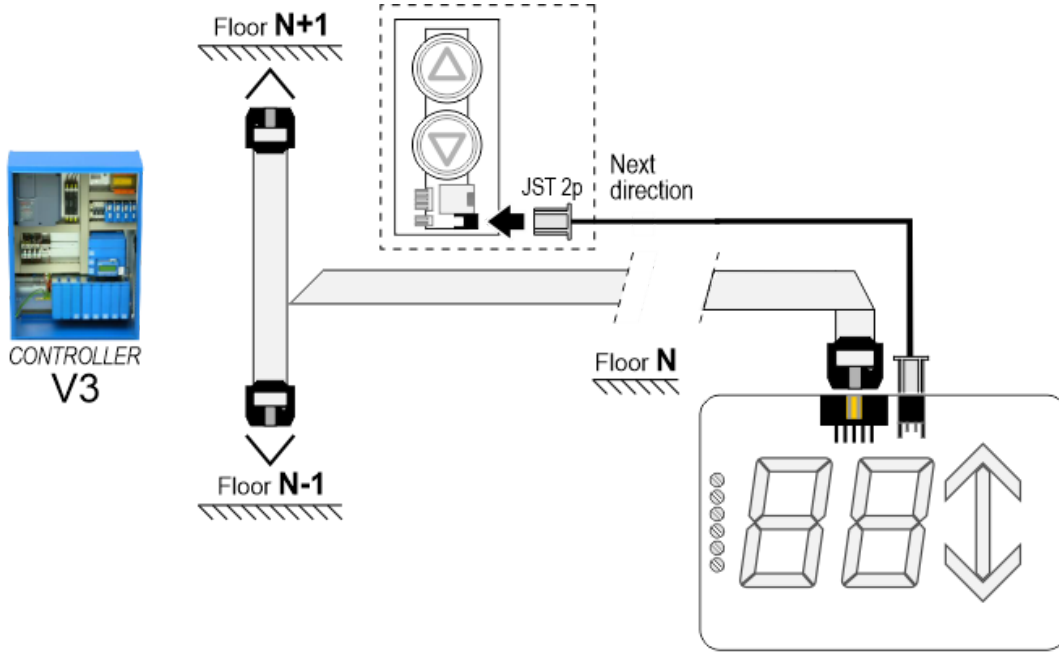


CONTROLLER  
V3



CONTROLLER  
V3



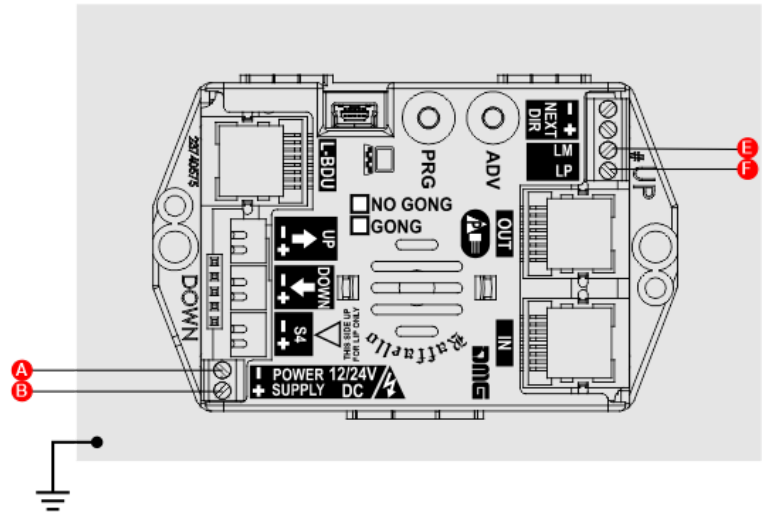
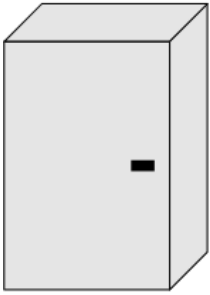
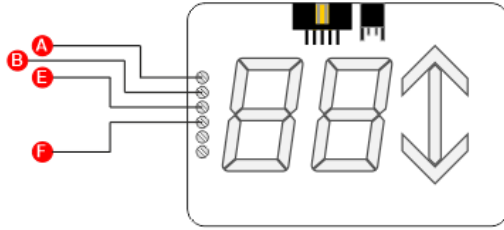
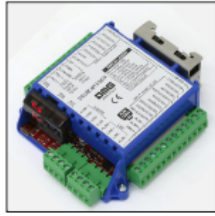
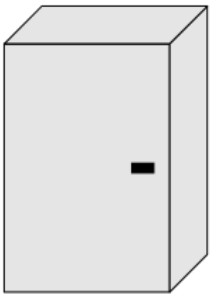


### Other Controllers D43 -> Raffaello D4

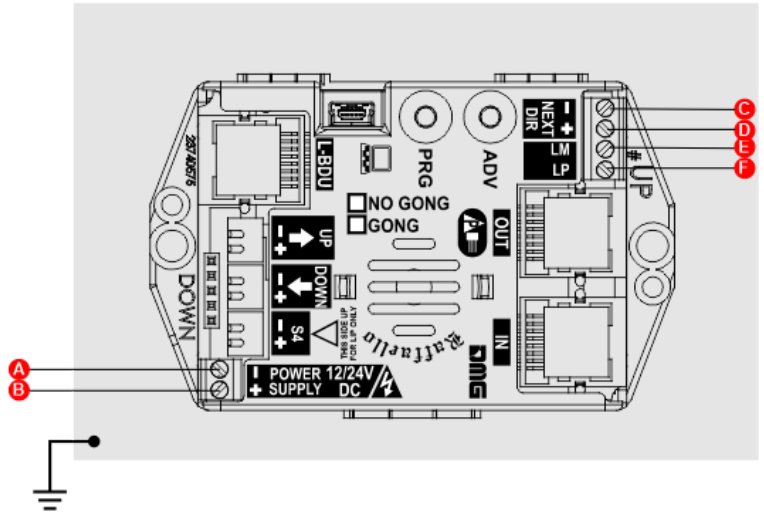
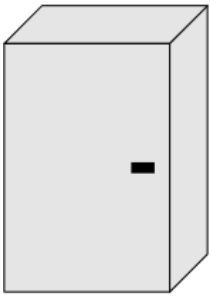
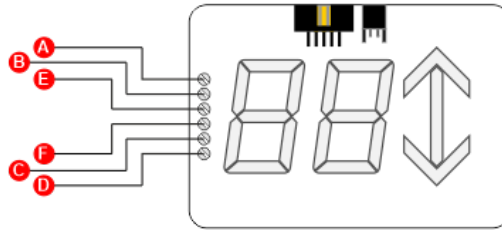
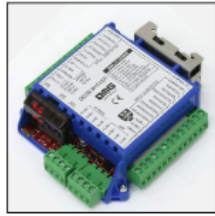
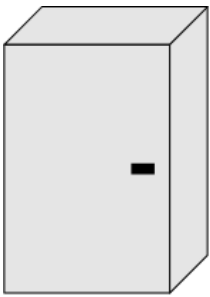
Encoder DEUM

Car

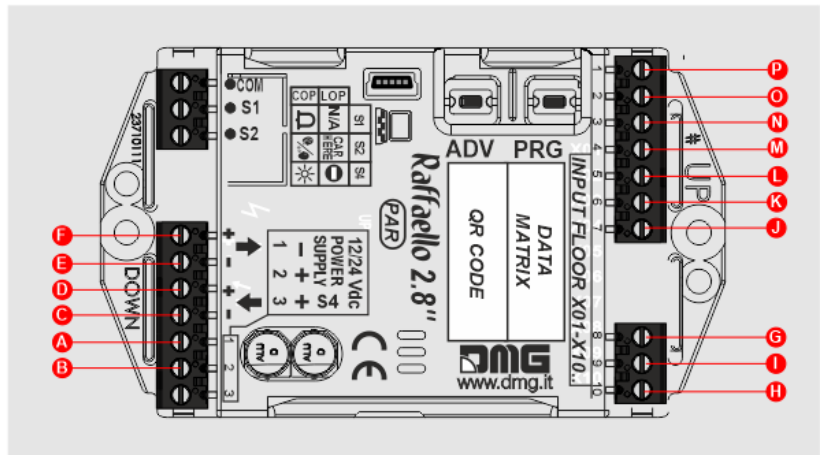
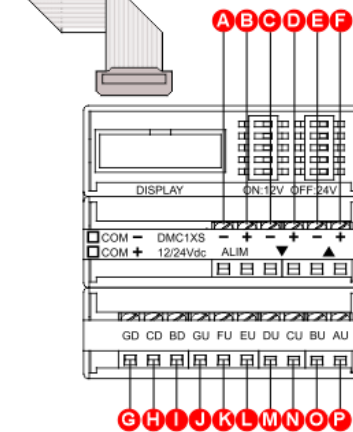
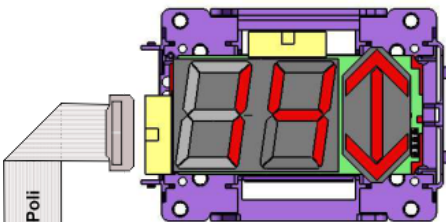




Floor

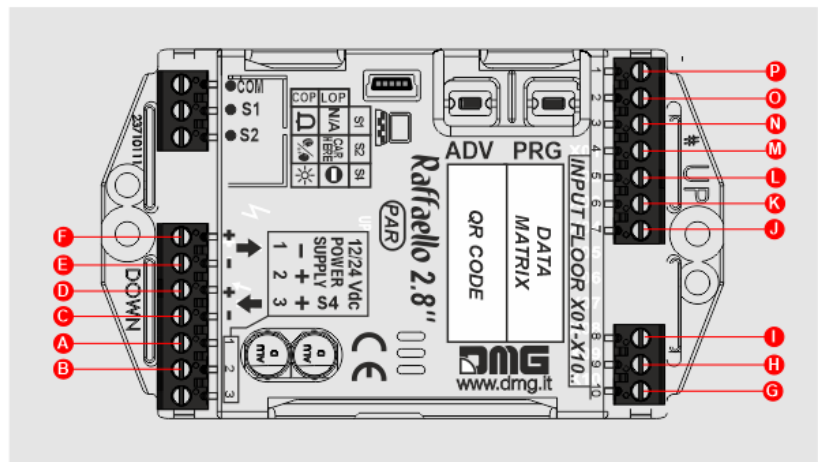
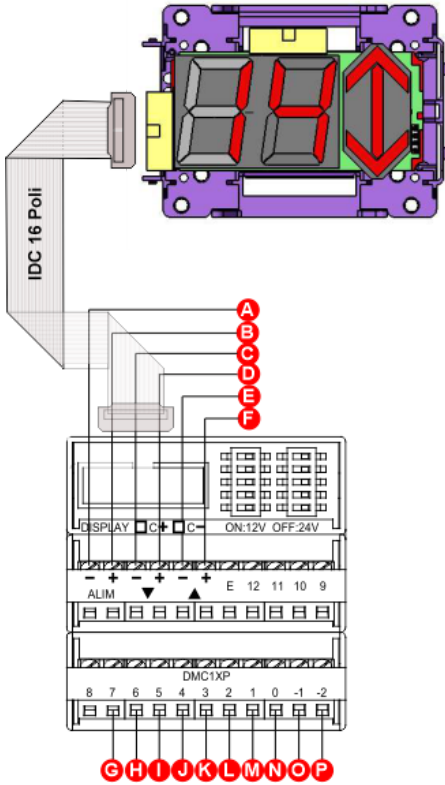


1 Wire / Segment

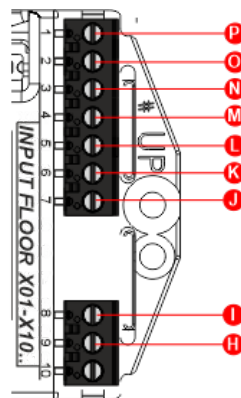
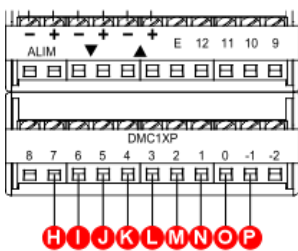


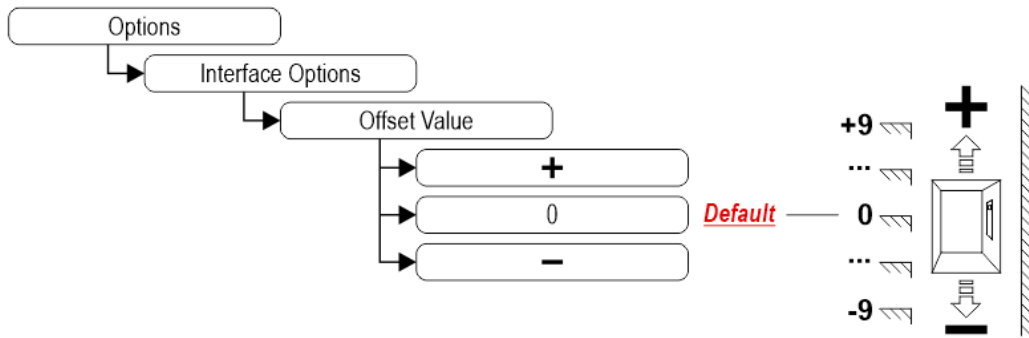
❗ In case of Display + Arrows, cables C – D – E – F will be wired on the arrows. Therefore will not have to be wired to the Display

1 Wire / Floor



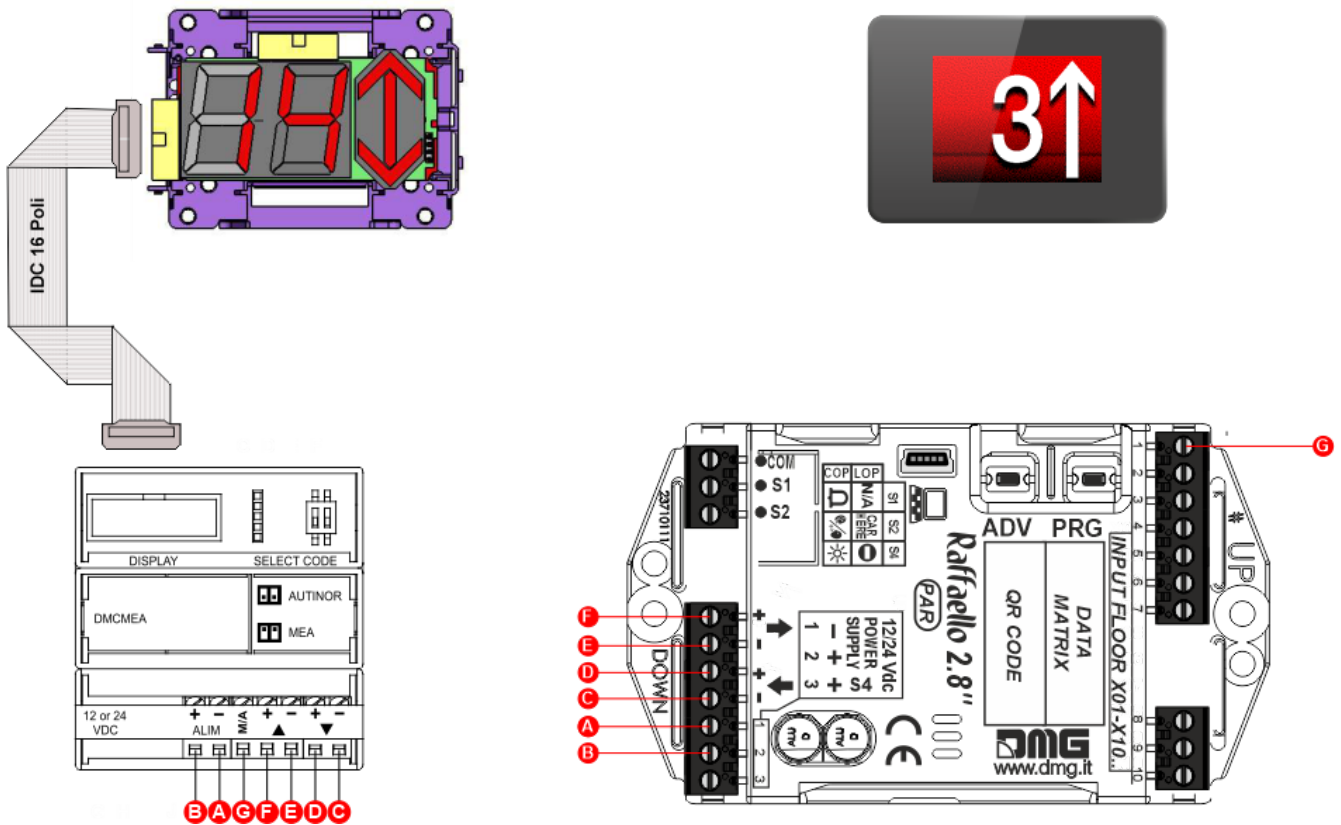
❗ The new TFT displays have menu-programmable inputs. Therefore always start connecting the position wires starting from the lowest floor in the X01 input of the TFT display and the others in the following inputs, then adjusting the offset. For example, starting from floor -1, wire as below and set the offset to -1





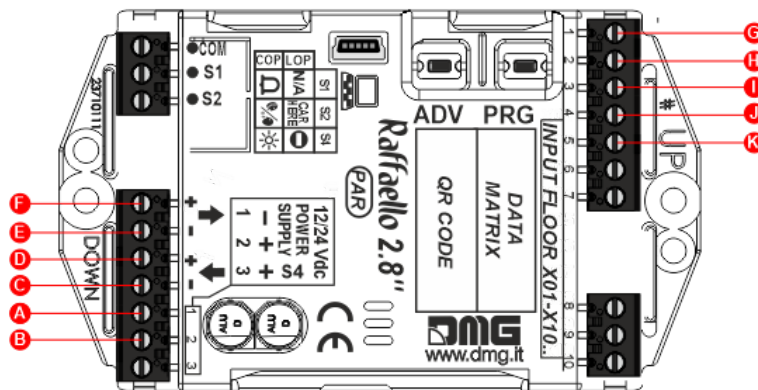
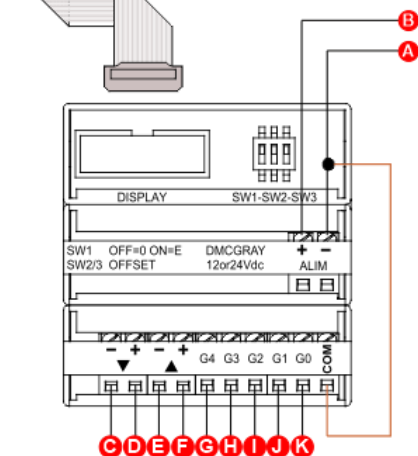
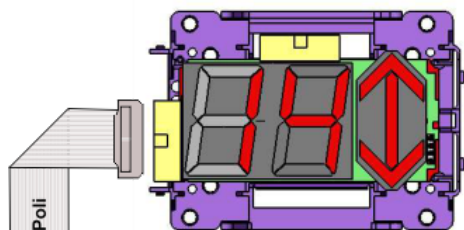
❗ In case of Display + Arrows, cables C – D – E – F will be wired on the arrows. Therefore will not have to be wired to the Display

### ME-AUTINOR







❗ In case of Display + Arrows, cables C – D – E – F will be wired on the arrows. Therefore will not have to be wired to the Display

### GRAY



⚠ In case of Display + Arrows, cables C – D – E – F will be wired on the arrows. Therefore will not have to be wired to the Display

## Settings

 <b>ADV</b> Setup Key	 <b>ADV</b> Exit / Back	 <b>PRG</b> Access Menu Key	 <b>PRG</b> Value setting (>3 sec.)
--	--	--	--

Navigation menu keys

## D67 -> Giotto D6

### Coding



The display navigation menu is in English only; to see the correct menu items we recommend setting the DIDO website language to English.

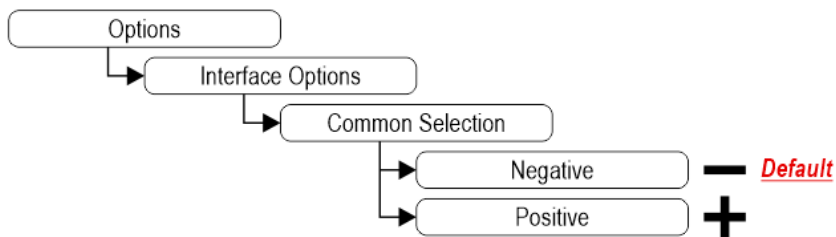
MENU	MENU ITEM	AVAILABLE CHOICES	INPUTS		
			Serial / Pitagora	Parallel	CANBUS
Input		Serial / 1 wire per floor / segment	•	•	•



MENU	MENU ITEM	AVAILABLE CHOICES	INPUTS			
		Gray / Binary / Pos.Sensor TKE / MEA / Autinor / CAN DMG				
Audio Settings	Volume (Gong, floor message, etc.)	0-OFF / 1-MIN / 2 / 3 / 4-MAX	•	•	•	
	Trigger Delay	0, 1, ..., 30	•	•	•	
	Message Sequence	Gong - Floor - Up/Down	•	•	•	
Options	Interface Options	Display Configuration	COP / LOP / LIP	•	•	•
		Arrow Configuration	Direction / Next Dir.	•		
		Car at Floor	No / Yes	•		•
		Gong with NO Arrows	No / Yes	•		
		CAN Baudrate	250k, 125k, 10k, Auto			•
		Convert Mezzanine	No / Yes	•		
		Offset Value	-9 / ... / 0 / ... / +9		•	
		First Visualization	Blank / Zero		•	
		Common Selection	Negative / Positive		•	
		Arrow Type	Fixed arrows / Scrolling arrows		•	
		Enable AUX Signals	10 + 0 / 6 + 4		•	
		Input Filtering	0 ... 20		•	
		Gong from Arrows	No / Yes		•	
		Firefighters Operation	0 (Disabled) / 1 (Egress Floor) / 2 (Non-Egress Floor)	•	•	•
		Screensaver timer	Disabled / 10-20 / 30-60 / 60- 120	•	•	•
	Graphic Options	Floor Symbols	Show / Hide	•	•	•
		Arrows	Show / Hide	•	•	•
		Floor Symbols with Signals	Show / Hide	•	•	•
		Arrows with Signals	Show / Hide	•	•	•
		Auto Centering	No / Yes	•	•	•
		Numbers alignment	Center / Left / Right	•	•	•
		Kerning	No / Yes	•	•	•
		Filter Blinking Signals	No / Yes	•	•	•

MENU	MENU ITEM	AVAILABLE CHOICES	INPUTS
	Orientation	Landscape / Portrait	• • •
	S1-S5 inputs Configuration	Input S1 / ... / S5	• • •
	AUX Signals Configuration	AUX Signal 1 / 2 / 3 / 4	• • •
	Info Screen	On / Off	• • •
	Info Screen Tme	5s / 10s / 15s / 20s	• • •
	Date & Time Settings	No / Yes	• • •
	Reset All Settings		• • •
USB	Display -> USB / USB -> Display		• • •
	Aggiornamento firmware / Firmware update		• • •
?	DEMO mode	No / Yes	• • •
	Firmware Ver. / Config. Name / Debug Mode / Life Time (internal use)		• • •
Floor Settings	Floor Image	Choose the Images	• • •
	Floor Audio	No / Audio slot 0 / ... / slot 19	• • •
	Floor Symbols	Choose the Symbols	• • •

### Common

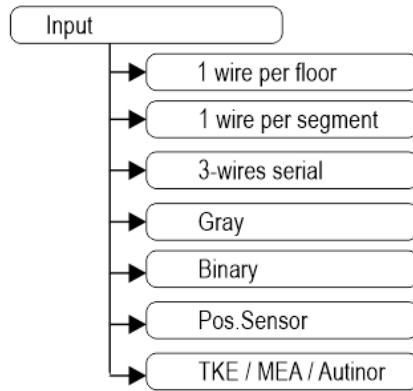


**i** For all settings of the new Giotto display, click the **following link**.

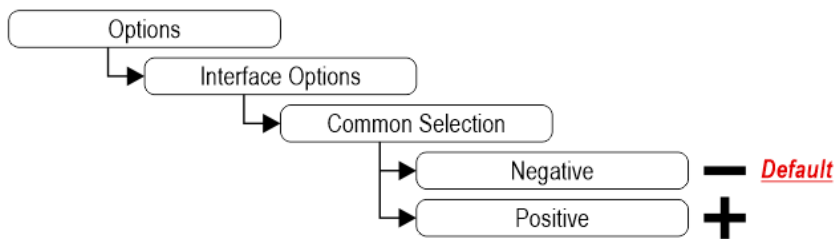


**D43 -> Raffaello D4**

### Coding



Common



For all settings of the new Raffaello display, click the [following link](#).



Updated on 17 Luglio 2023