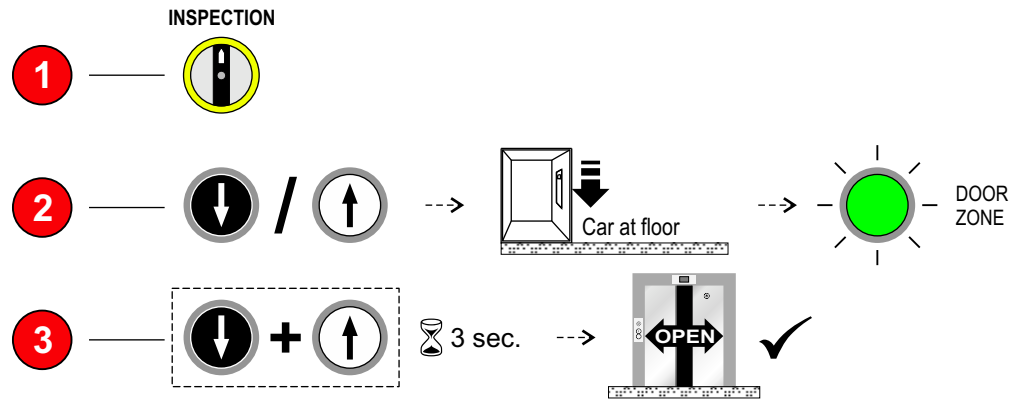
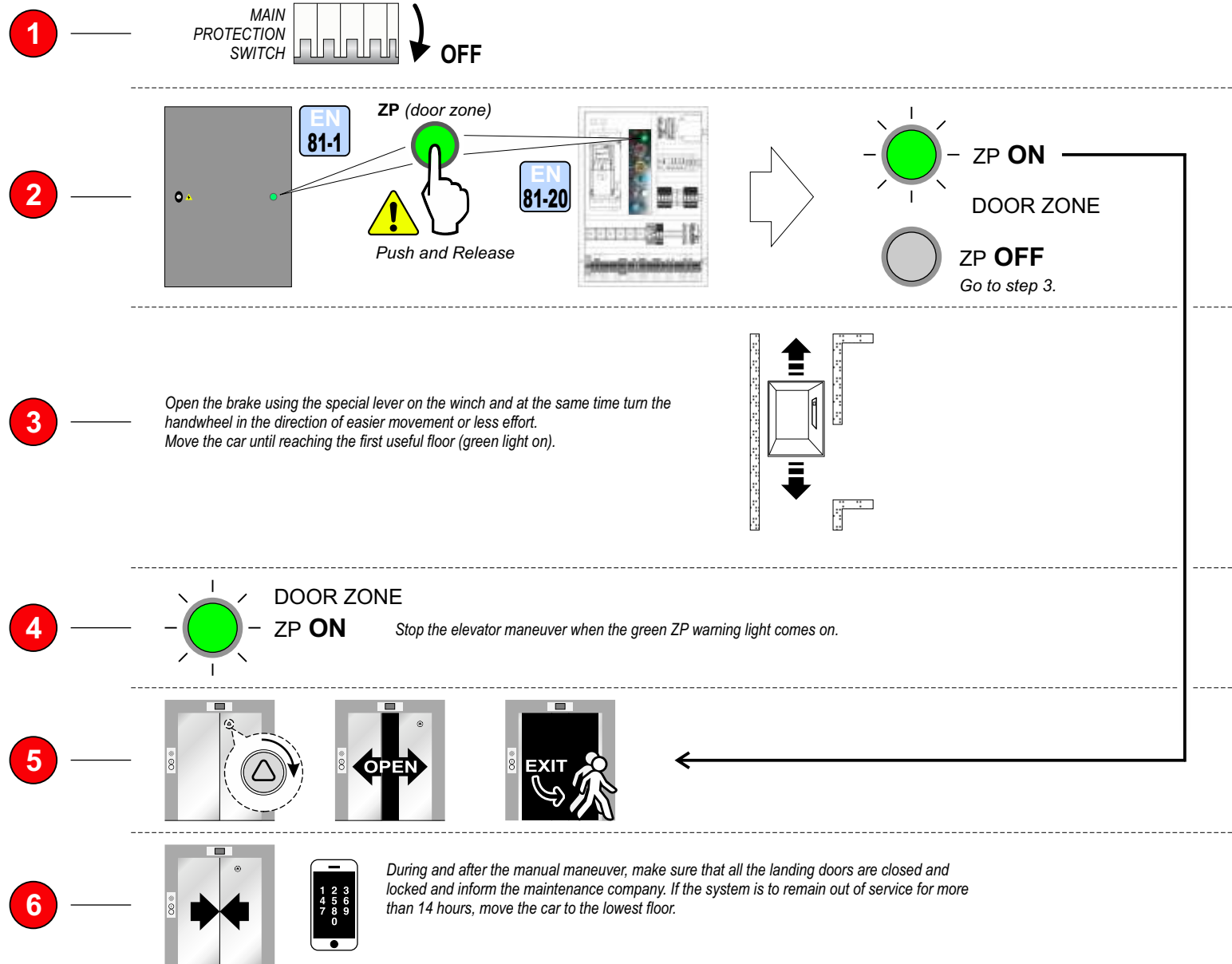


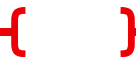
ELECTRICAL EMERGENCY OPERATION (EN81-20/50 - § 5.12.1.6)



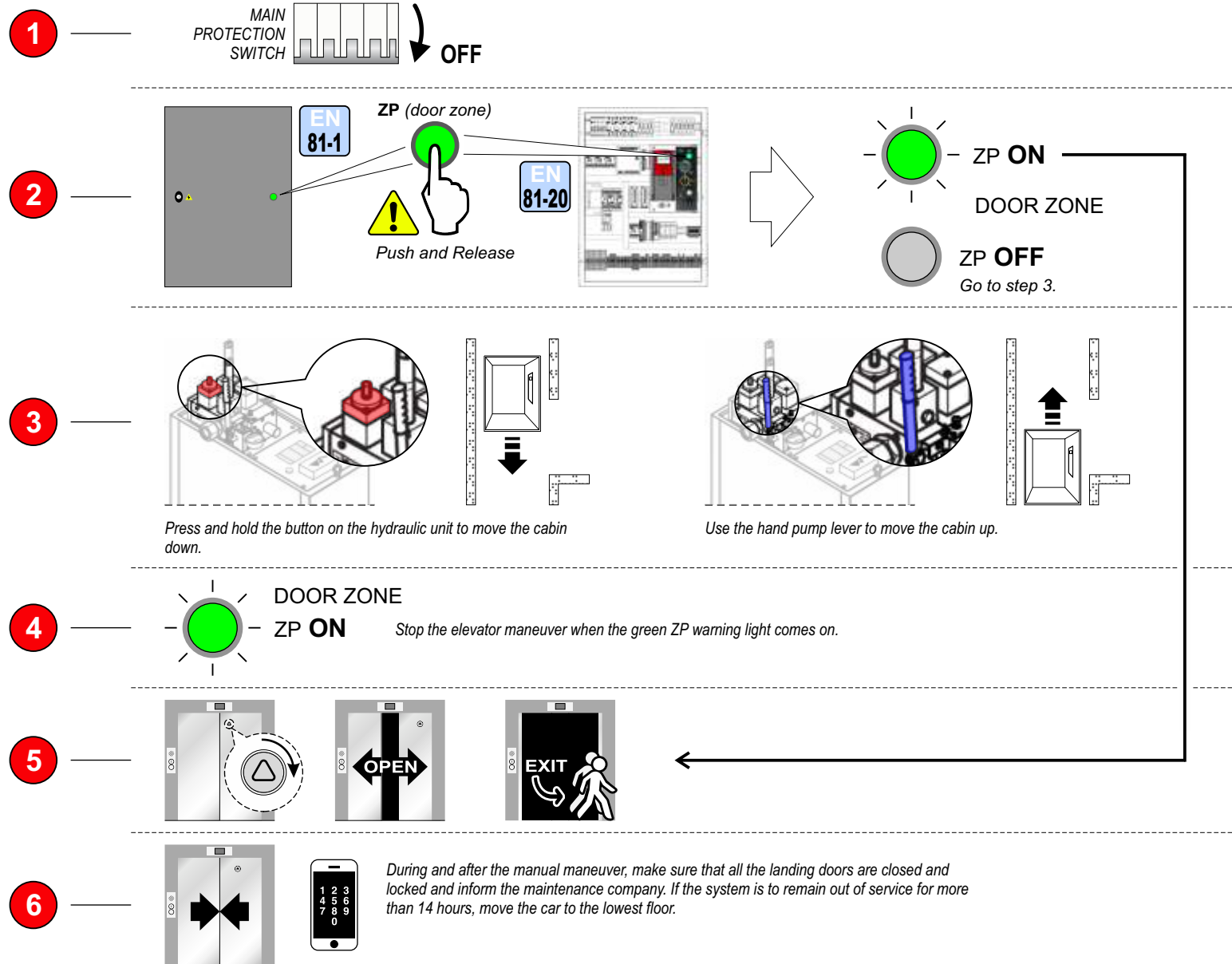
RESCUE OPERATION FOR TRACTION LIFTS



After pressing the ZP button you have 1 hour (default) to carry out the maneuver. If the procedure takes longer, press it again.

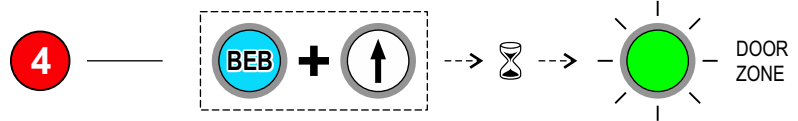
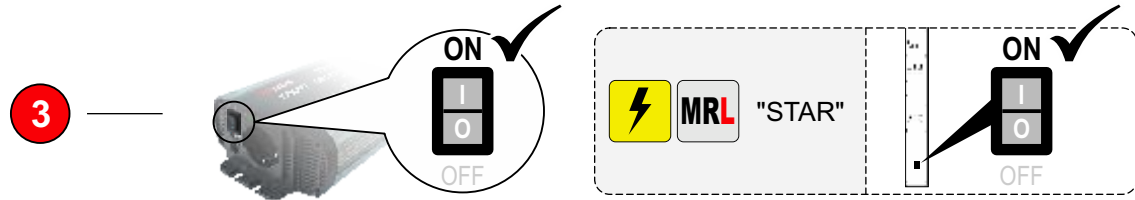


RESCUE OPERATION FOR HYDRAULIC LIFTS



After pressing the ZP button you have 1 hour (default) to carry out the maneuver. If the procedure takes longer, press it again.

UNBALANCING RESCUE OPERATION (EN81-20/50 - § 5.9.2.3.1)



Push BEB and Up buttons.
 NOTE: Door safety chain contacts are completely bypassed. Brakes will be powered, Cabine should move for unbalance (direction according to the load in the cabine). In case of over speed (> 0,3 m/s) Cabine will stop and need to release buttons and press them again to restart. When the Cabine reach the floor (Green light "DOOR ZONE") controller automatically stops. Release buttons BEB and direction.

